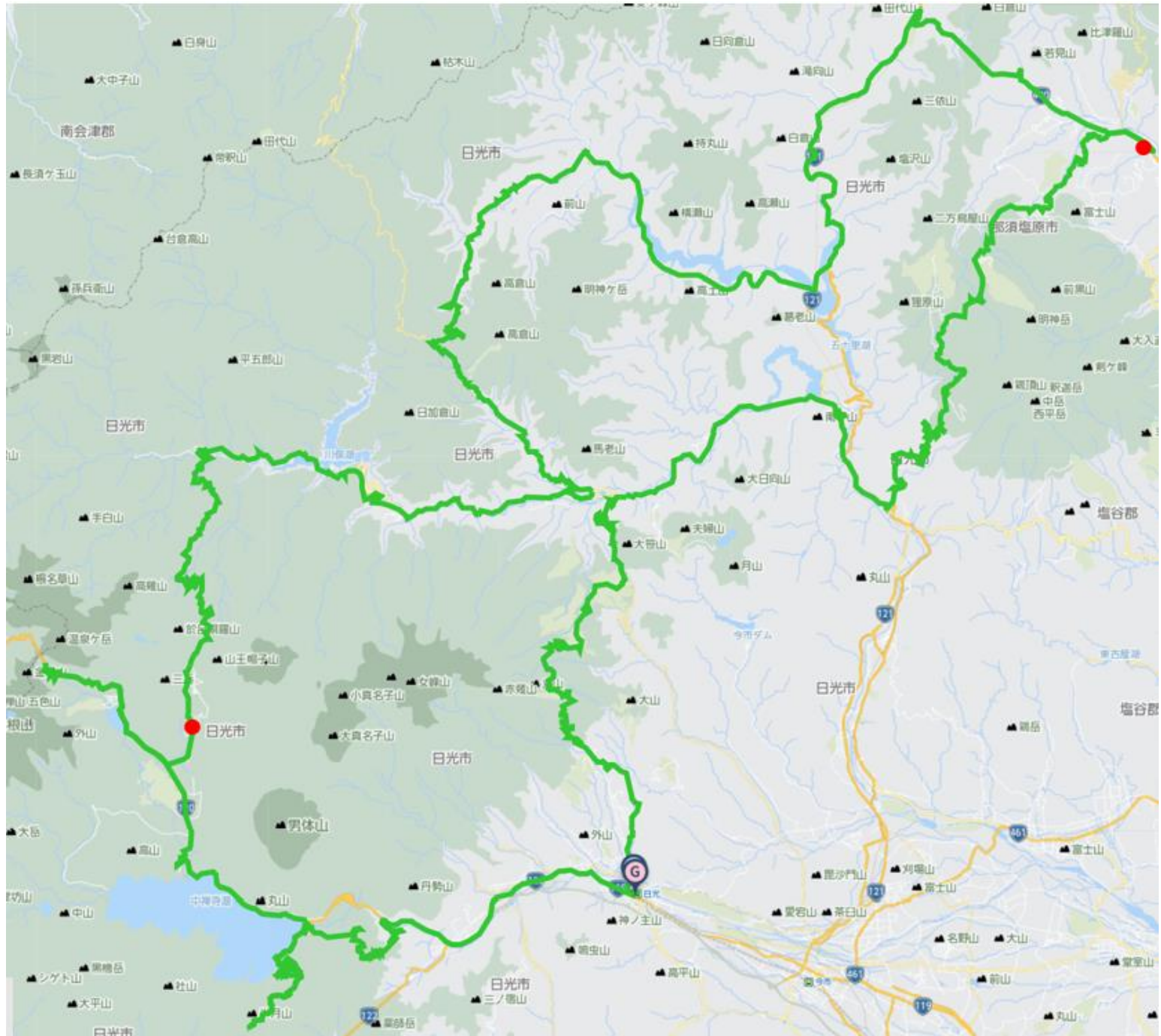


JT0Nikko Nasu Bicycle Journey

2025 September 5th(Fri)~7th(Sun) 3days

Distance:259km Total gain:6026m

<https://www.navitime.co.jp/coursebuilder/course/814ed52581e746bf88526fa1e44594a0>

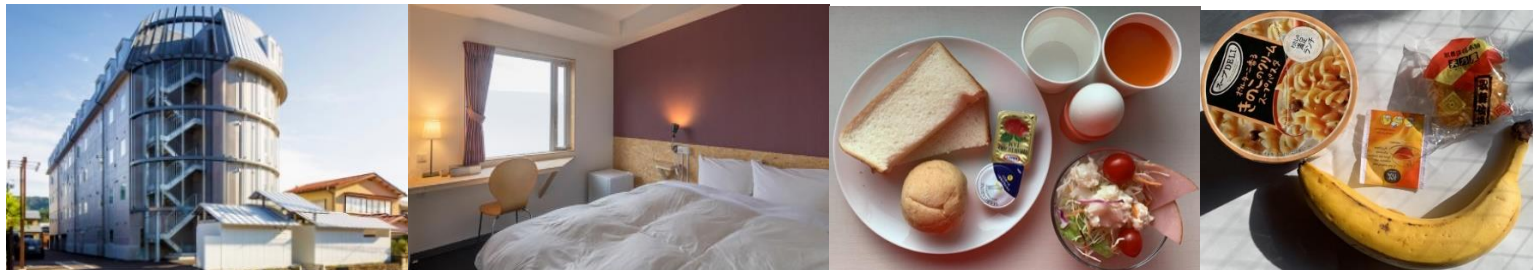


September 5th Nikko Sunrise at 5:16 Sunset at 18:01

2025 Summer Nikko Nasu round 3rides

- ① 5th(Fri) Nikko→Kotoku spa 89km+2444m
- ② 6th(Sat) Kotoku spa→Nasu Shiobara spa 99km+1717m
- ③ 7th(Sun) Shiobara spa→Nikko 71km+1865m

4th(Thu)7th(Sun) Pre Post stay recommend Nikko station hotel II
〒321-1406 Tochigi pref Nikko city Matsubaracho17-4 0288-53-2002
(Breakfast free from 7:00~)



Sightseeing recommend Nikko Toshogu temple Rinkoji temple Old Nikko Tabosawa house Nikko botanical garden



Nikko owl forrest Tezuka Tokuo stone carving museum Nikko city historical museum•Ninomiya Sontoku memorial hall
SL showroom Nikko nature museum



Pre post stay meal Around Nikko station TrattoriaGigli kamaya café deyurevuaberu Ko sushi Ramen Bonten

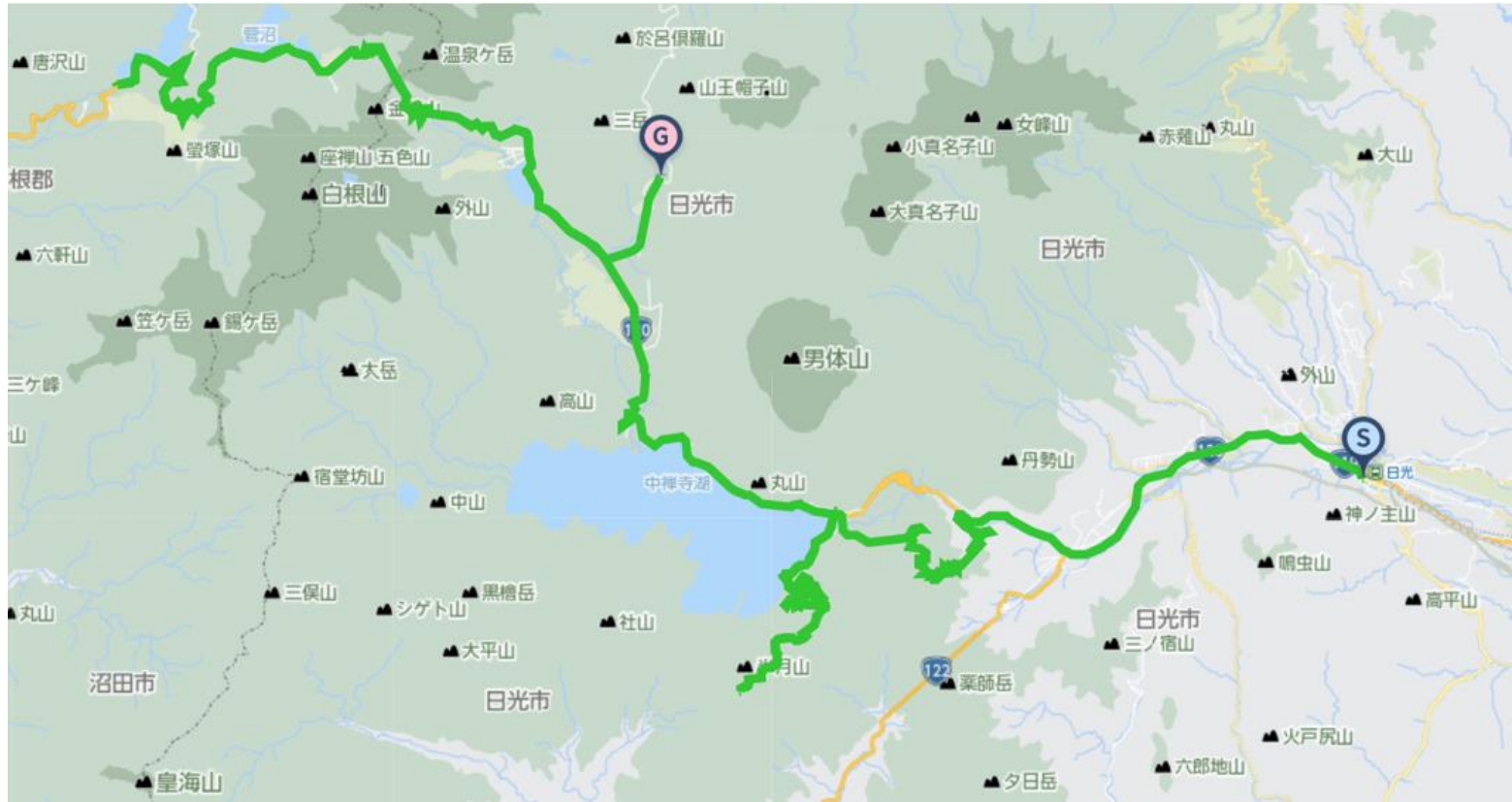


Kanaya hotel Enya Meiji hall Nikko Gourmands Wagyu



1st day September 5th(Fri) Gather at 8:30(Start briefing•Bicycle check)Start from 9:00~
Meet at: Nikko station hotel II
•Before starting we have briefing forcouse , meal stay. Please come after finishing breakfast.
The day move recommend train:Tobu express liberty Kegan 1st for Tobu Nikko Asakusa6:30→Tobu Nikko 8:25

1st Day September 5th(Fri) Nikko→Kotoku Onsen spa 89km+2444m
<https://www.navitime.co.jp/coursebuilder/course/58a75506de554310b9ded2b2b8871bfe>



Lunch Chuzenjiko lake(36km) Okamoto/Lake Okajin Hand made taste Taro Nantai Kirihana dining



Maple Chez Hoshino Lakes Nikko Dining room Mizunara



Sightseeing The second Irohazaka slope Akechidaira rope way Akechidaira observation deck Kegonnotaki fall



Hangetsu Mt. Chuzenjiko view observation deck(From Hangetsuyama bus station , walk about 30 minutes on mountain road)
 Tachiki Kannon Utagahama •Chuzenjiko pleasure boat Italia embassy villa memorial hall



Ryuzunotaki fall Senjogahara field Kinsei pass(Tochigi pref road highest point) Suganuma swamp



Nippon romantic road Marunuma swamp Marunuma plateau ski resort Kotoku farm



Stay Kotoku onsen spa Nikko Astoria hotel 〒321-1661 Tochigi pref Nikko city Kotoku Onsen 0288-55-0585

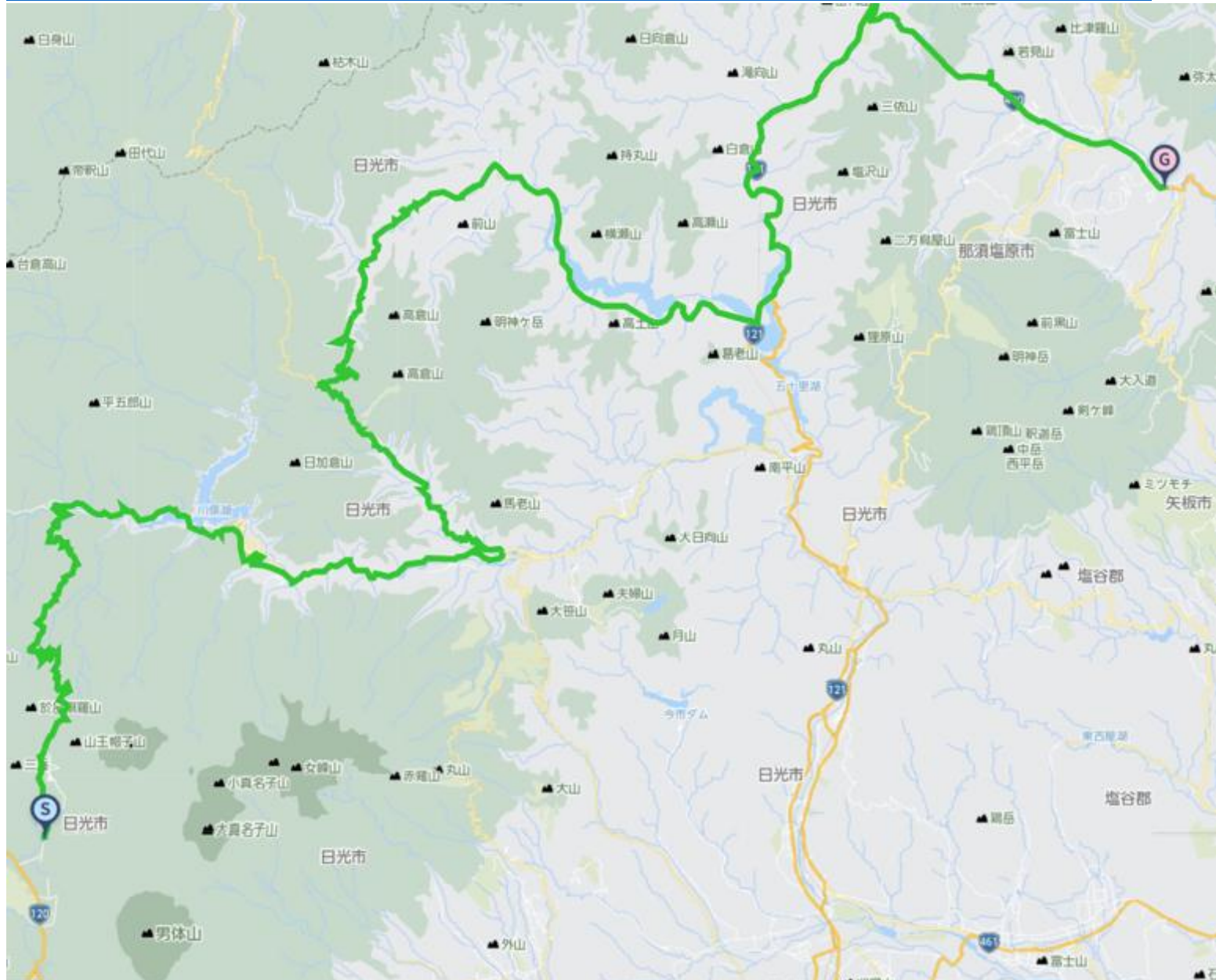


Other stay recommends Okunikko Kogen hotel Okunikko Yumoto Kamenoi hotel Okunikko Konishi hotel

Okunikko Yunomori Kyukamura Nikko Yumoto Kankosou
 Public Bicycle carry moving recommend Tobu bus Nikko local bus

2nd Day 6th(Sat) Kotoku onse spa→Shiobara onsen spa 99km+1717m

<https://www.navitime.co.jp/coursebuilder/course/4a28bb171b584a5ea6f5bf577200b493>



Lunch Nikko Kuriyama onsen(38km) Yamaaji soba noodle Kitanomichi Kuriyama home products center Kuriyama fishing Otaki soba



Yu Nishikawa spa(61km) Yamaga Heike soba noodle Shioya Yamadori dining Grill meat Yamaji



Sightseeing Okukinu forrestv road Kawamata onsen spa village Kawamata lake Kurobe dam lake



Yu Nishikawa onsen spa village Heikenosato field・Heike fallen person Folklore Museum Yu nishikawa lake
Michinoeki Yunishika ・Yunoko line



Stay Shiobara Onsen spa village Tokiwa hotel 〒329-2921 Nasushibara city Shiobara 695 TEL: 0287-32-3251



Hotel Oruri 〒329-2921 Nasushibara city Shiobara 815 0287-32-5500



Outside dinner recommends Ebisuya Kyuchan Shiobara yoshoku dining Mikasaken Japanese Mtsumoto Koraku sushi



Other stay recommends Majimaso Honjin creative cuisine and pure natural spa

Public Bicycle carry moving recommend Tobu bus Nikko local bus Nikko→Kamiyori Shiobara Onsen
Tobu Kinugawa line Yagan railway line Aizu Kinugawa line

<https://www.navitime.co.jp/coursebuilder/course/0d7b5b0182004fffa5595c962ba6a30a>



This block contains four photographs of Japanese cuisine. The first photo shows a bowl of ramen with chopsticks, a side of tempura, and a bowl of miso soup. The second photo shows a bowl of ramen, a bowl of tempura, and a bowl of miso soup. The third photo shows a bowl of ramen, a bowl of tempura, and a bowl of miso soup. The fourth photo shows a bowl of ramen, a bowl of tempura, and a bowl of miso soup.

Kawaji onsen spa(35km) Himawari dining(Inside Kawaji dam museum) Sansuian sobannoodle Kurobe dam(45km) Hinatasoba Kitanoji



Kuriyama(46km) Magokoro soba Kuriyama home products center Kitanoji soba Nikko Kiriburi plateau Osasa farm BBQ



Kiriburi plateau rest house(51km) Yamano restaurant(67km)



Sightseeing Nitishio Momiji line Ryuokyo Kawaji Gojyuri dam observantion deck Kuriyama Nikko line



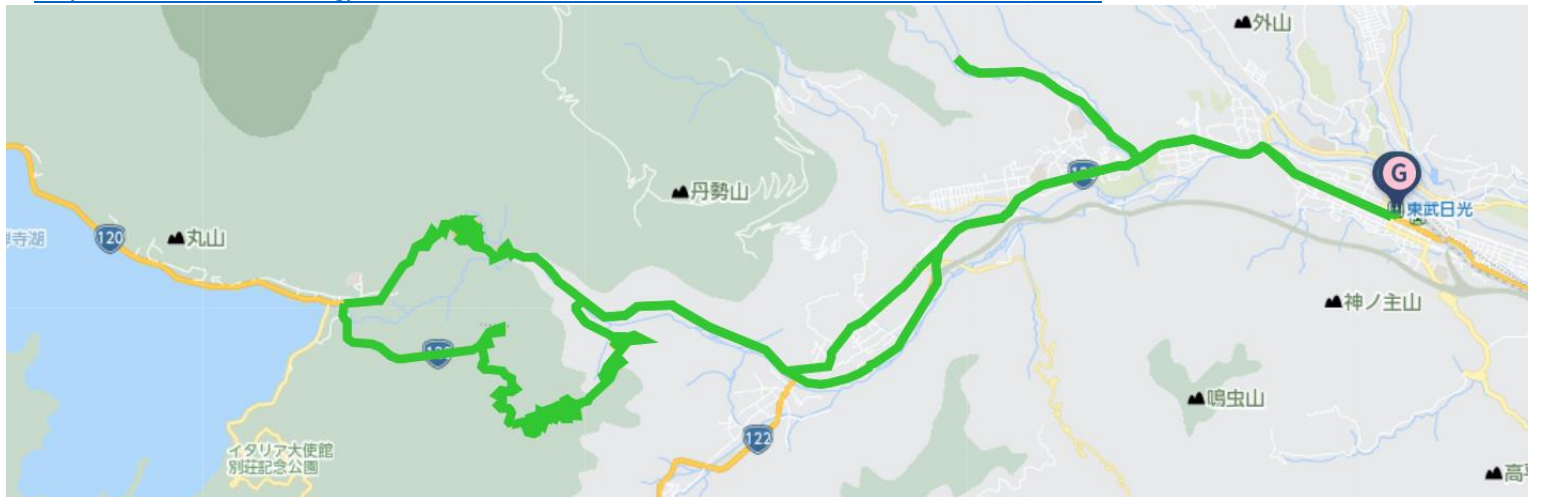
Kiriburi plateau Kisuge plane footsteps(1445steps, Need 40minutes) Komarudai observation deck Kiriburi fall

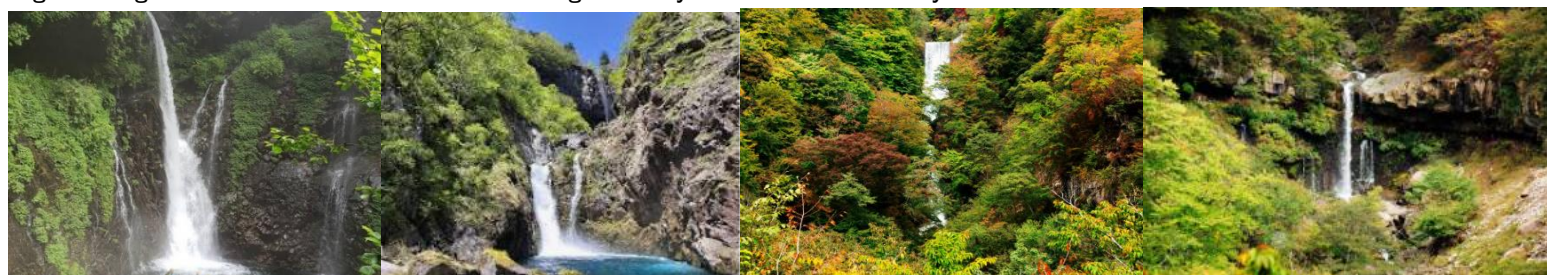


Public Bicycle carry moving recommend Kamiyori Shiobara Onsenguchi→Nikko Tobu Nikko line Tobu Kinugawa line

Time attack Nikko station~Urami fall~Secons Iroha slope up ~Kegon fall sightseeing~First Iroha slope down 40km+1151m
It takes 3-hours to finish this time attack. Only possible to attack on starting until 14:00 around Nikko station(70km-point)

<https://www.navitime.co.jp/coursebuilder/course/3c0dab242e694c2ca695f3c73cb7ecff>





Bath recommend Nikko city Onsen spa relaxation center 〒321-1423 Nikko city Nanasato680-1
(10:00~21:00 1.5km from Nikko station)



Nikko station hotel classic(11:00~16:00 Final entrance 15:00 In front of Nikko station)



Buying foods and souvenirs Nikko bussan kyokai Mizuguruma bussan Toko bussan Lion Dor supermarket



Ride Join Fee(Per day) 13,000JPY(Include Tax)

Included ride join fee : Travel attendant , Support car accompanying Support food supply(fixed limited)

※NOT INCLUDE Moving fee between your home to the starting point , food , stay , support food more than the limited , public move fee , sightseeing fee are all not included at all.

※Joining on the way , Leaving midway , traveling with one's bicycle using public transportation , you should pay the ride join fee per day for each you made application.

Max Possible Join 13riders Minimum Number of riders;3-Riders(Full ride join)

※Allowed partial join

Contact E-Mail Adress : soma@jtourism.jp

Please apply with the information as below.

We make estimation as the days you ride , ride fee , stay , food , public moving , sightseeing , for total costs.

Up to the formal application as below , let you show the personal information.

•The day you ride •Your name •Sex •date , month , year of birth,age •Adress •Handy phone number •E-Mail address

•Stay and food wishes

✕We select and reserve the stay and foods. Personal arrangements are not possible by each riders.

✕Please give the wishes for shared room for men and women , single , twin , foods.

✕Please stay in the stays at the organizer's designated stays.

In some case , we cannot meet your request and change the stays on designated.

•Please let me know the pre and post ride sightseeing wishes , settings.

•Possible to contact on the ride day (handy phone)&emergency contact (handy phone possible to contact to the substitute person ✕Other than the person riders yourself)

•Experience of your biggest riding , distance(km), Elevation gained(m)

implementation(Western calendar) season(month, spring summer fall winter)

area(country , prefectures, course name)

If we judge that you do not have enough experience to participate in this project, we may decline your participation.

Rental bicycle

Possible to prepare rental road-bicycle , cross-bicycle

If you wish to have rental bicycle , please apply in advance. Request together for Tokyo cycling tour and rental cycle , the partnership ship company.

① Height(cm)②weight(kg) ③bicycle model you wish ④Helmet ⑤grab ⑥pedal (binding or flat) ⑦Bicycle receiving place

Please let me know them when apply. Sometime , it may not turn out as you wish. Prepare wears and shoes by yourself.

I estimate rental price up to the information

Implementation notification;After recruitment deadline to some days before the starting , number of riders , weather forecast , judge the implementation and contact directly to the riders.

Refund ; In case of impossible to hold the plan , we pay back Amount excluding expenses such as fees from ride participation fee.

If the participant is unable to participate due to circumstances , paid ride participation fees will not be returned.

If it becomes impossible to run due to weather or local situation judgment after the start , paid ride participation fees will not be returned.

•Take ride onto the tour recommended courses with group rides and solo freerides

•There is no competition for time. Riders work together to reach the goal. Awards will not be given based on ranking

•There will be no traffic control around the venue. Please follow the local traffic rules.

•Group rides/recommended course rides are the basics. Please notify in advance for your wish on solo free rides.

•It is also possible to switch to local wheeled transportation instead of riding due to physical condition etc.

•The support car transports unnecessary luggage while riding a bicycle , supply support food , follow finishing.

•The support car moves at the behind of the last rider, basically.

•If you ride out of the recommended course , we do not change the stay point.

•There is no support rider leading or tailgating.

•Those who can join that possible to reach their destination on their own using a smartphone, navigation system, or location search device , or possible on a group ride those who can accompany other members with cooperation.

•If there is a significant delay from the moving of other riders in the group , we will give you instructions on how to move your bicycle to the stopover point, accommodation on the day, and the goal.

•The organizer will present recommended courses in advance , but the support car will not be providing detailed guidance to riders while moving alongside them along the way.

•Bicycles, helmets, puncture kits, bike bags, clothing, cold weather gear changes, etc , please prepare what you need

and bring it with you by yourself.

- Please wear brightly colored clothing such as red, yellow, and white. Never wear dark colors such as black or navy blue. We will lend you a red jacket if necessary.
- You are responsible for your own bicycle maintenance and repairs. Please prepare your own spare tubes, maintenance tools, etc.
- standing air pumps and tool boxes will be carried in the support car.
- Please carry a lightweight soft bicycle bag. Carry it with you while riding, so you can move around while riding.
- Depending on where we are staying, bicycle bags may also be used to store your bicycle inside the hotel. Please be sure to carry bicycle bag.
- If you wish to store your bicycle in the accommodation, please help us store it in a bicycle bag when you enter the stay and bring it into the building.
- Hard and semi-soft large cases compatible with airplane rides cannot be transported on the road by the support car.
- If you are joining with a large wheeled device with a hard case or semi-soft case that is compatible with airplane wheeling, after refilling the soft bicycle bag, check-in at the departure/arrival airport and advance transportation to the planned goal point are required.
- Please purchase your own travel insurance and bicycle insurance. Please purchase bicycle insurance with a personal liability amount of 200 million yen or more.
- Please bring your insurance card with you when participating. We check your carry-on the insurance before departure.
- We eat lunch around noon at the same near restaurant in the same area as possible, depending on the progress of the tour group.
- Lunch, dinner, breakfast, and bathing fees are not included in the ride join fee.
- Support food is also dependent on paid donations from past participants. When you use it, please donate to volunteers or goods.
- Toll road usage fees, sightseeing fees, and travel expenses are not included in the ride participation fee.
- Routes and expenses occurred for group transportation will be decided on-site after discussion, taking into account terrain, weather and progress.
- Transportation costs from your home to the meeting/dissolution location and use of public transportation midway are not included.
- To maintain your health and maintain hygiene, please take a bath, shower, and change of clothes before using public transportation after your ride before going back to your home.
- To avoid inclement weather or traveling in the dark after sunset, we may ask you to turn back, take a shortcut, or take a bicycle onto train move from a station along the way.
- Participants are responsible for safety, course management, bicycle maintenance, cold/heat resistant clothing, measures to prevent bicycle stolen, etc.
- If we decide that you cannot participate safely at your own risk, if you are causing a significant nuisance to other participants, or if you are unable to follow the instructions of the staff, you will be asked to leave the venue even midway through.
- Please note that the participation fee will not be refunded under any circumstances.
- Sightseeing recommendations: If you arrive early and have time, please go sightseeing on your own.
- If you have a request for sightseeing in advance, we will take time in advance and provide support, such as temporarily taking over your bicycle.
- If you consult with us in advance, we will be able to arrange and provide on-site guidance regarding recommended tours for the day before and after ride.

Accommodation, dinner and breakfast

- This is a ride tour in which the organizer decides in advance which lodgings to stay at and travels from one inn to another to sightseeing spots and famous places.
- Accommodation fees are not included in the ride participation fee. It will be included in the cost estimate as a necessary expense at the time of application.
- Recommended accommodation, dinner and breakfast will be arranged by the organizer. Subject to change.
- As much as possible, we prepare at lodging locations bicycle storage in or near the hotel, a large hot spring bath, yukata, dinner and breakfast, a sleeping room, and a power source.
- We eat dinner and breakfast generally as a group at stay, but, if you wish to eat food outside the stay, please contact us in advance.
- If you have dinner, breakfast, or bathing buying outside the building, we will not provide transportation by support car and not accompany. Please move on your own by walking or using public transportation.

- Each day, luggage will be loaded into the support car and the start will be from the meeting point at designated accommodation. Please come to the meeting point by the departure time
- The meeting departure time is basically 7:30 am every morning, but it changes depending on the breakfast service time and driving distance, and will be decided locally.

=====

Dealing BS Travel Service Co., Ltd
Japan Tourism Agency Registered Travel Agent (No. 347) Regular member of the Japan Association of Travel

Planning by
Japan Tourism Organization General Incorporated Association
Representative Director Mikihiro Soma
Kyowa-bld 2F , 3-2-7, Shimbashi, Minato-ku, Tokyo, 105-0004, Japan
Inside BS Travel Service Co., Ltd
Mobile 090-4568-1444
E-Mail soma@jtourism.jp Home-Page <http://jtourism.jp/>

=====