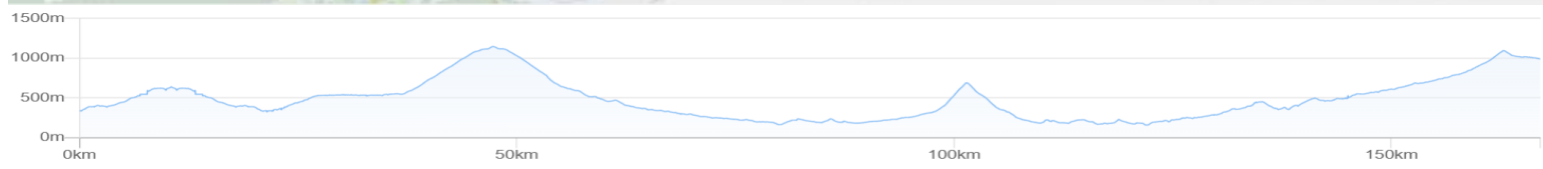
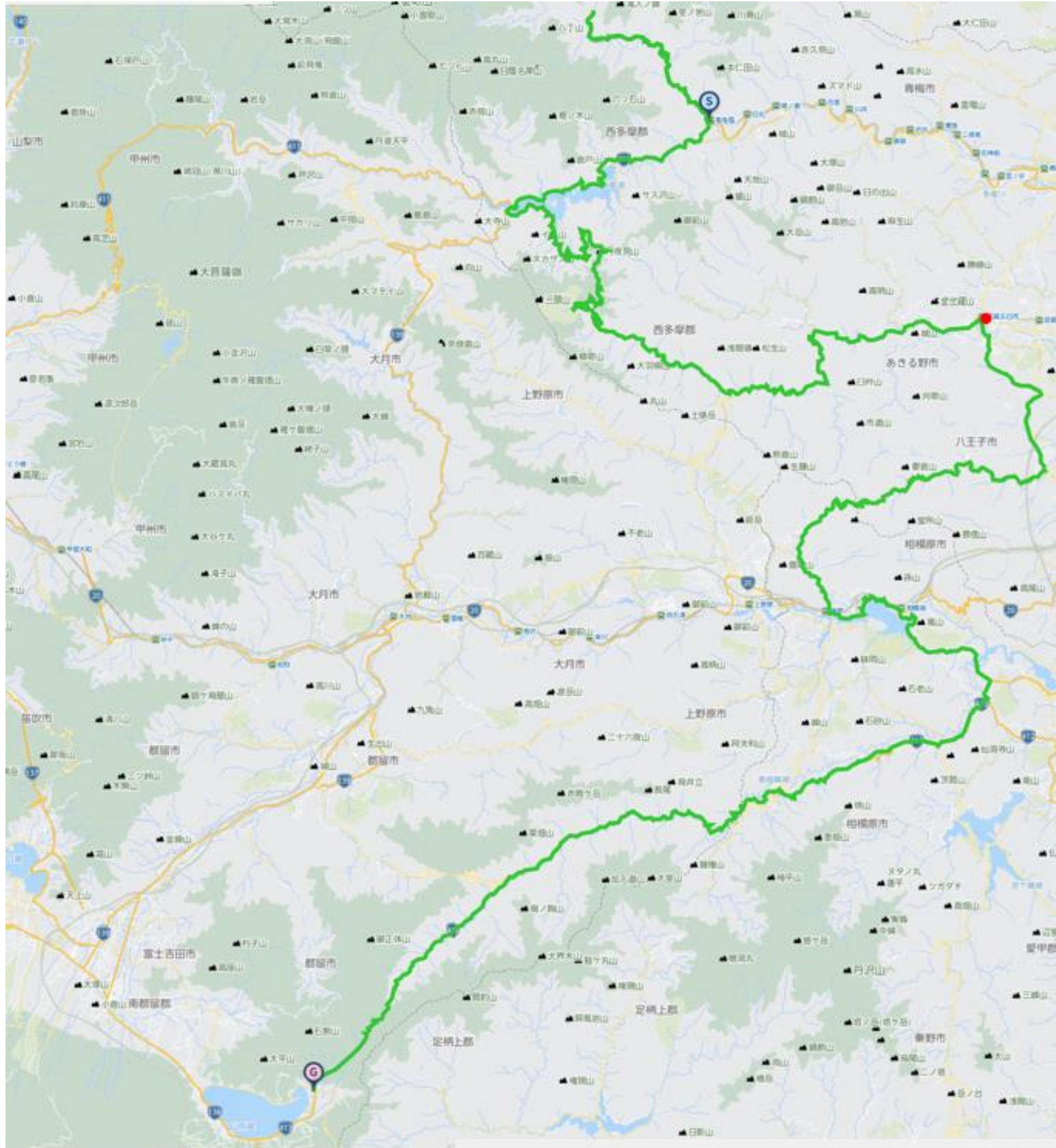


JTO Okutama Doshimichi Bicycle Journey

2025Dec27th(Sat)~Dec28th(Sun) 2Days

Distance:166km Total Gain:3713m

<https://www.navitime.co.jp/coursebuilder/course/675cd8f4bee24e738038b985f3251c95>



Okutama lake and hill,Doshimichi Mt.Fuji view round

Okutama lake→Kazahari pass→Wada pass→Doshimichi→Yamanaka lake

① 27th(Sat) Okutama lake→Kazahari pass→Musashi Itsukaichi 79km+1550m

② 28th(Sun) Musashi Itsukaichi→Sagami lake→Doshimichi→Yamanaka lake 87km+2163m

2025 December 27th(Sat) Tokyo Sunrise at 6:49 Sunset at 16:35

Pre stay sightseeing Hinode Sanso US-Japan Summit Memorial Hall Tsubokusaen Indigo dyeing experience hall
Yoshino plum field Yoshikawa Eiji memorial hall



Ozawa Sake brewery Mitake valley Tamado museum Chidori wasabi farm



Mral recommend Around Oume station Tonkatsu Taro Mayugura Omebeer Craft Beer Bar Hachinoko dining



Okutama station Akabeko fireside grilling PORT Okutama Hachinoki pot PIZZA Shinchan



Pre stay Hikawago Asabanoyu spa Mikawaya ryokan
Tokyo to Nishitamagun OkutamachoHikawa1414 TEL:0428-83-2027



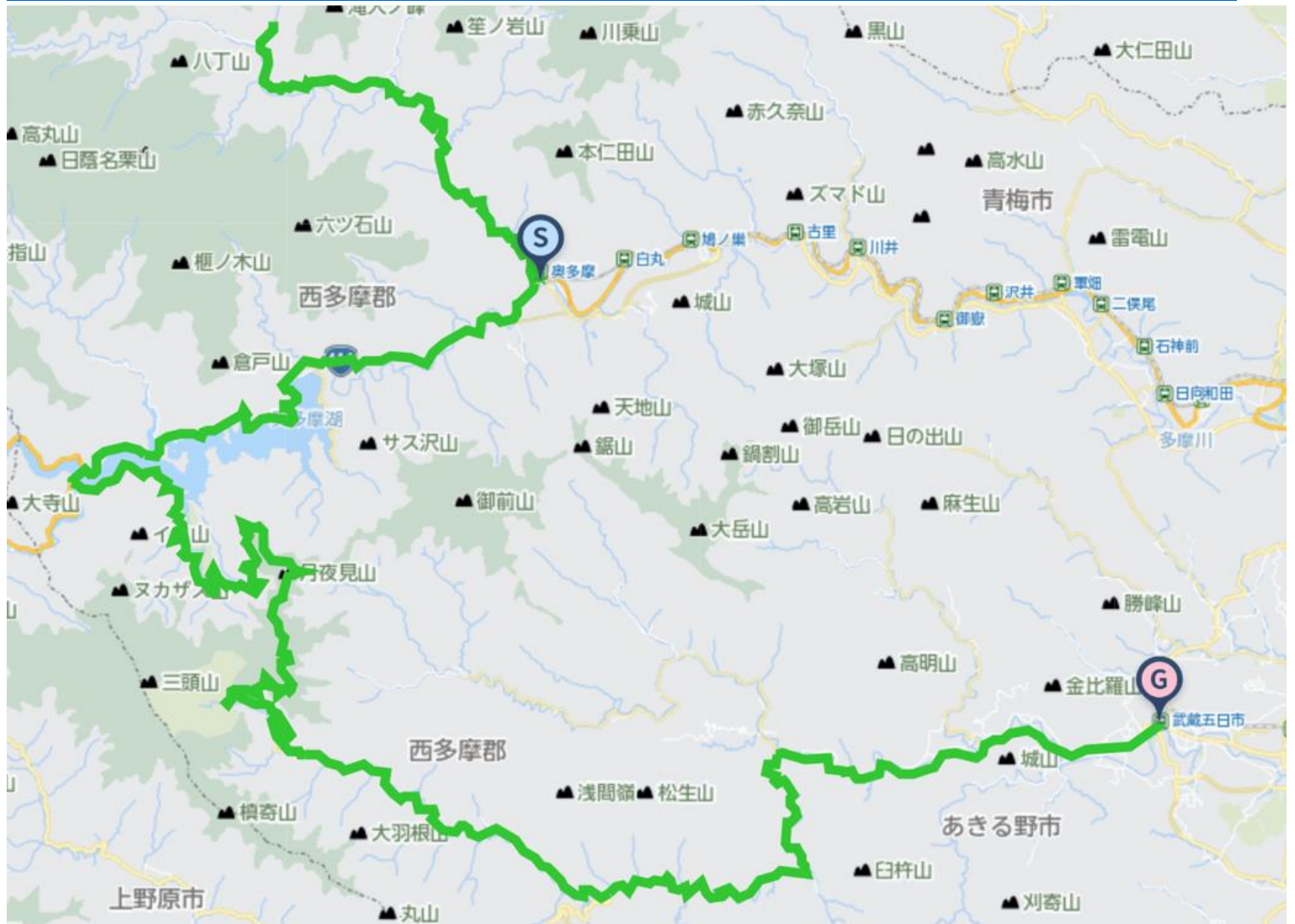
Other stay Kyokusuiso Arasawayaya ryokan Osho Unzenya Hatonosuso Okutama wind

Meet at December 27th(Sat) 9:00 Okutama station

1st Okutama 79km+1550m

Okutama lake→Hibara limestone cave→Kazahari pass→Hibara village→
Akikawa valley→Musashi Itskaichi station

<https://www.navitime.co.jp/coursebuilder/course/8e409db372cb4ddf843fb978888a6158>



Lunch Okutama lake north(32km) Katakuri flower Maruitei Okutama rest inn Toomawari cafe Nonkiya



Okutama lake south west(34km) Shimasho Jinya Drive inn Yakutei Yamasemi dining cafe



Kazahari pass~(46km~) Kazamanoyu spa Hibara onsen Kanzukuri inn Sengenzaka Mokuan Yururi dining



Hatano Tachibanake villa delpino Chitoseya Hibara Tofu



Sightseeing Okutama st Okutama industrial line Hibara limestone cave(If watching inside , recommend pre stay and go 9-17)



Kogouchi dam Okutama lake Kazahari forest road Kazahari pass



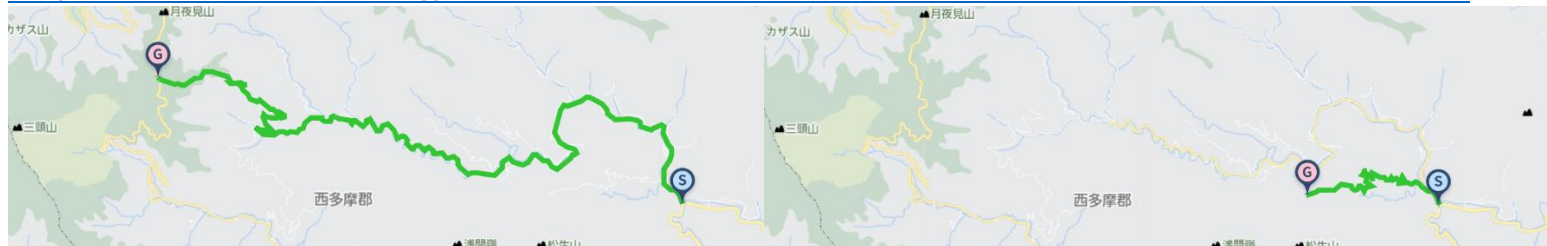
Hibara Tokyo forrest Hirara Tofu Chitoseya Akikawa valley・Ishifune bridge Kurochaya dining



Attack ride Tokyo hardest Kazahari forest road up hill climb +17km&938m Tokisaka pass hill climb +3.3km&300m

<https://www.navitime.co.jp/coursebuilder/course/8bf86d45dd9f431d8dbd61dad1b53329>

<https://www.navitime.co.jp/coursebuilder/course/eb7d24fe30924ebfab4718c9a1d9a3e1>





On the next morning , we start at 6:30 to prevent from dark time riding , watch sunset seenary , public moving.
 If the stay cannot serve breakfast , prepare onigiri rice ball at the night. We prepare miso soup and some other foods to eat with hot water or carry out.
 In case breakfase carrying out , we take time for breakfast and toilet at Seven Eleven Akiruno Masudo , Family mart Hachioji nishi inter , Yuyake Koyake Fureainosato.

Outside dinner Mimatsu Izakaya Uoji sishi Shion yoshoku kitchin Kawanami Kaiseki Japanese dining

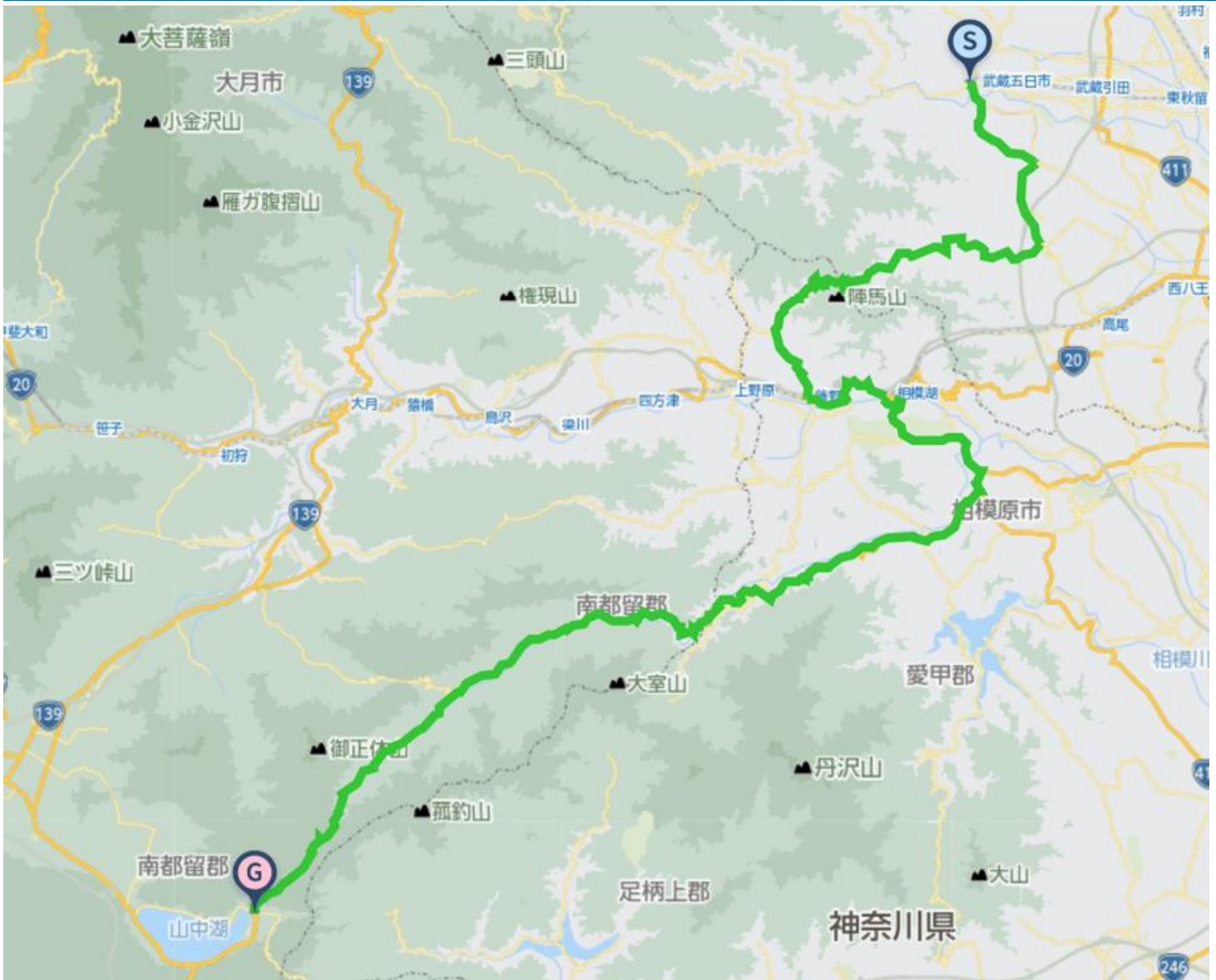


Other stay Aburaya ryokan Yamakei Tokura shiroyama terrace
 Public move recommend JR: Okutama station~Hajima station~Musashi Itskaichi station
 Hibara village Kazuma bus stop to Musashi Itskaichi station each hour one bus moving

2nd Wada pass~Doshimichi~Yamanaka lake 87km+2163m

Musashi Itsukaichi st→Wadapass→Sagamilake→Doshimichi→Yanbushipass→Yamanaka lake

<https://www.navitime.co.jp/coursebuilder/course/365157e6e1234c2a9612454c48096b03>



Lunch Fujino st(31km) Furi(Japanese) Wakaba soba noodle Sagamiko st(35km) Cafe de Vivier(Italian) Korakuen(Taiwan)



Sagami lake side(36km~) Shimizutei Matsukien CAFÉ COCCO KARIN



Doshimichi starting point Apuama crossing around(43km)
 Dojin dream farm(11:00-) Hamacho(11:30) GARDEN412(11) Sukiya R413 Tsukiu Sangaki(24H)



Doshimichi(47km~)
 Chosan(11:30) Old house café Masa Plus minutes(11:00 FriSatSun) WAG'S 413 Kitchen(11:00 SatSun only)



Tsukiyono(58km) Yukawaya Ryogokuya(11:00-)



Fujino st~Doshimichi Short cut course Yamatoya Ayano Fujino Fujino club barmers kitchen Yamanami spa Yamanami dining



If refer public move , starting Aoyama crossing at 11:30 after lunch. In case riders cannot start Aoyama crossing at 11:30 , recommend to take short cut course for Fujino station to Doshimichi Aone(12km shorter)
 As the ride move , not round Tsukui Miyagase lake , Fujino Sagamiko st to Aone short cut. If thought for impossible to get over Yambushi pass , takepublic mobe as below , Fujikyu bus.Recommend to have lunch at Tsukiyono.
 Public move :Fujikyu bus Doshi line Tsukiyono(13:00 58km)→Doshi village hall(13:19 48km)→Yamanaka lake Hirano(14:01 86km).

Michinoeki Doshi around (73km)
 Michinoeki Doshi Kikuya courtlet Obaani Daidikoro Grand mother's kitchen THE TEPPAN SEIAN



Sightseeing rest Yuyake Koyake Fureainosato Miyao shrine·Yuyake Koyake lilics statue Jinba road Wada pass



Wada pass Mt.Fuji view spot Sagamiko lake Doshimichi road Michinoeki Doshi



Yanbushi oass Yamanakako lake Diamond Fuji Mikuni pass sunset view



Bath Inter resort Higashiya Yamanashi pref Minamitsurugun Yamanakakomura Hirano126 0555-65-7745 Just near Hirano Crossing



Ishiiwarinoyu spa Yamanashi pref Minamitsurugun Yamanakakomura Hirano1450 0555-20-3355 1.2km from Hirano crossing
No serving meals Possible to eat in buying foods as Michinoeki Doshi or other at the free rest room.



※Inter resort Higashiya is basically for the sports groupstaying , in case big group staying , impossible to use day spa use.
Diamond Fuji near Yamanaka lake , 15:20 around Harimomi Junrin woods. 6km from Hirano crossing Yamanakako.
Passing Hirano crossing Yamanakako. At 15:00 , possible to see Diamond Fuji from Harimomi Jinrin woods Yamanakako.
Sunset from Mikuni pass is at 16:40. 2.8km+100m from Hirano crossing Yamanakako.
Passing Hirano crossing Yamanakako. At 16:20 , possible Mikuni pass attack and sunset view.

Outside・Before bus taking meals(Near Hirano bus station)

Marutaka(Close 19:30) Sugeez lil' frites(17:00)Gutan(18:00) Maru Chacoal grill(Open17:30) SevenEleven YamanakoHirano(24H)



Near Hotel Mt Fuji bath meal: Benifujinoyu spa

Meal: Nagomi(18:30~) Sushihisa(17:00~) Fuji 5lakes restaurant(10-22) Family Mart Sun plaza hotel Fuji(7-23)

※Finishing near Hotel Mt Fuji Bus stop , possible eat dinner with slow and take final starting bus for Shinjuku(19:45start)



Post stay Yamanaka Lake Hirano crossing Sugakuso

〒401-0502 Yamanashi pref Minamitsurugun Yamanakakomura Hirano1898-2 TEL:0555-65-8137

※Lake side stay. On the fine morning , possible to see the Upside down Fuji.



Other stay(Near Yamanaka lake Hirano) Fijijyuso Toshokan Lake side inn Fijinami New Fukujuso Inter resort Higashiya

Near Hotel Mt Fuji:Myojinmae SUN PLAZA HOTEL Fuji Yamanakako

Express Bus for Shinjuku starts from each bus stop Yamanakako Hirano、Yamanakako Asahigaoka、Hotel Mt.Fuji(Myojinmae)

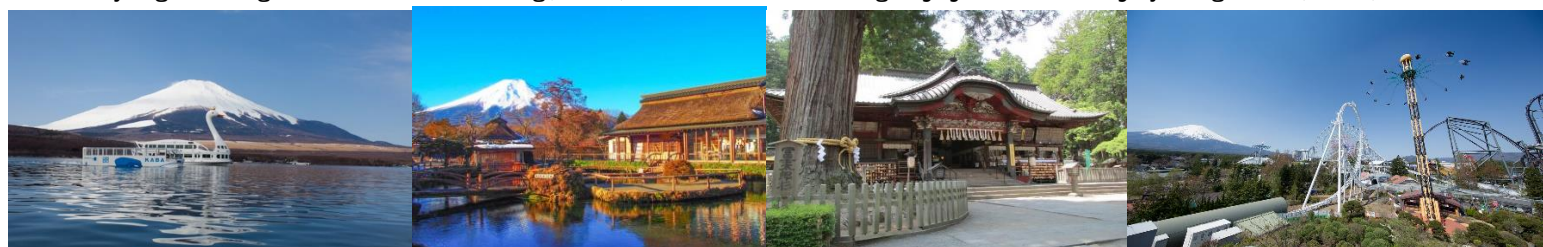
Possible to carry bicycle , need reservation(Possible to make reservation up to the ride schedule on the day , bath meals taking)

Express bus from Hirano Yamanakako starts 15:25 16:40 17:40

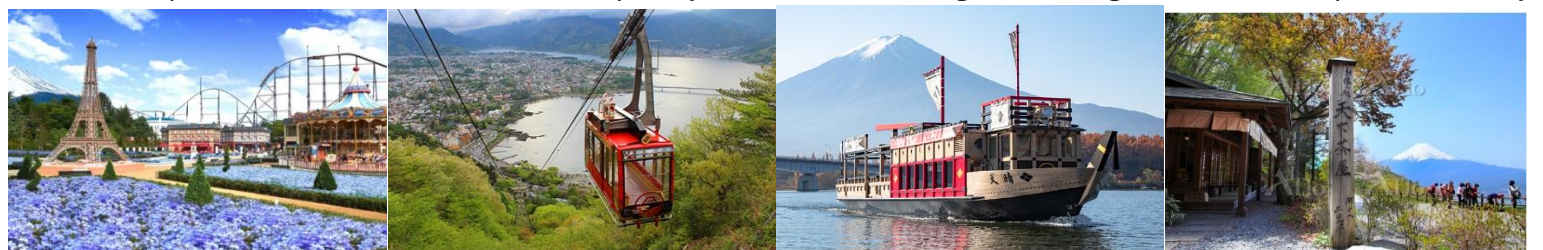
Yamanako Asahigaka 17:50 18:25 19:40

Yamanakako Myojinmae Hotel Mt Fuji entrance 16:10 16:30 16:55 17:55 18:30 19:45

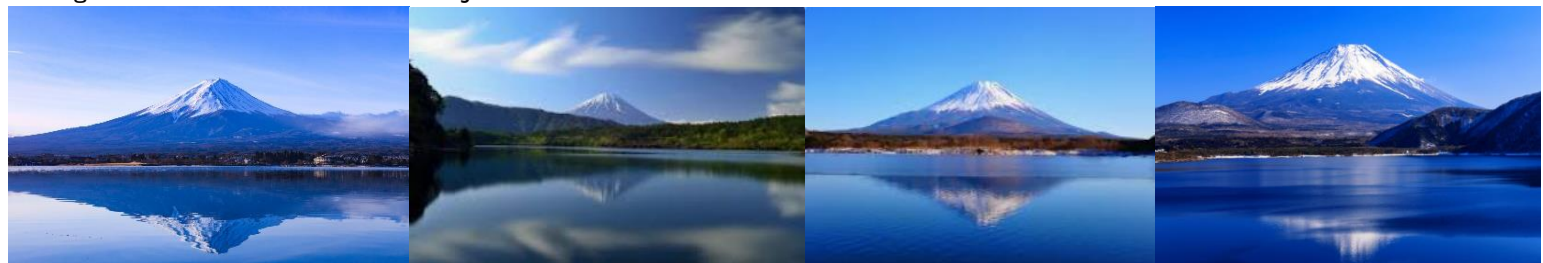
Post stay sightseeing Yamana lake cruising(9:00-) Oshinohakkai Sengen jinja shrine Fujikyu High land(9:00-)



Risa and Gaspar town(10:00-) Kachi Kachi Mt. rope way(8:30-) Lake Kawaguchi cruising(9:30-) Misaka pass Tenkachaya



Kawaguchi lake Nishiko lake Shojinko lake Motosuko lake



Ride Join Fee(Per day) 15,000JPY(Include Tax)

Included ride join fee : Travel attendant , Support car accompanying Support food supply(fixed limited)

※NOT INCLUDE Moving fee between your home to the starting point , food , stay , support food more than the limited , public move fee , sightseeing fee are all not included at all.

※Joining on the way , Leaving midway , traveling with one's bicycle using public transportation , you should pay the ride join fee per day for each you made application.

Max Possible Join 1 Orders Minimum Number of riders; 5-Riders(Full ride join)

※Allowed partial join

Contact E-Mail Address : soma@jtourism.jp

Please apply with the information as below.

We make estimation as the days you ride , ride fee , stay , food , public moving , sightseeing , for total costs.

Up to the formal application as below , let you show the personal information.

※Itinerary changes are possible for individual and group applications. We will create the order custom made project and estimate.

For the order custom made project , let you enjoy for fully , we will create a plan for each group.

※In case of terrible weather , body condition , seem impossible to finish riding on the day , move to the mid place or stay by using public move and support car.

•The day you ride •Your name •Sex •date , month , year of birth,age •Adress •Handy phone number •E-Mail address

•Stay and food wishes

※We select and reserve the stay and foods. Personal arrangements are not possible by each riders.

※Please give the wishes for shared room for men and women , single , twin , foods.

※Please stay in the stays at the organizer's designated stays.

In some case , we cannot meet your request and change the stays on designated.

•Please let me know the pre and post ride sightseeing wishes , settings.

•Possible to contact on the ride day (handy phone) & emergency contact (handy phone possible to contact to the substitute person ※Other than the person riders yourself)

•Experience of your biggest riding , distance(km), Elevation gained(m)

implementation(Western calendar) season(month, spring summer fall winter)

area(country , prefectures, course name)

If we judge that you do not have enough experience to participate in this project, we may decline your participation.

Rental bicycle

Possible to prepare rental road-bicycle , cross-bicycle

If you wish to have rental bicycle , please apply in advance. Request together for Tokyo cycling tour and rental cycle , the partnership ship company.

① Height(cm)②weight(kg) ③bicycle model you wish ④Helmet ⑤grab ⑥pedal (binding or flat) ⑦Bicycle receiving place

Please let me know them when apply. Sometime , it may not turn out as you wish. Prepare wears and shoes by yourself.

I estimate rental price up to the information

Implementation notification;After recruitment deadline to some days before the starting , number of riders , weather forecast , judge the implementation and contact directly to the riders.

Refund ; In case of impossible to hold the phan , we pay back Amount excluding expenses such as fees from ride participation fee.

If the participant is unable to participate due to circumstances , paid ride participation fees will not be returned.

If it becomes impossible to run due to weather or local situation judgment after the start , paid ride participation fees will not be returned.

- Take ride onto the tour recommended courses with group rides and solo freerides
- There is no competition for time. Riders work together to reach the goal. Awards will not be given based on ranking
- There will be no traffic control around the venue. Please follow the local traffic rules.
- Group rides/recommended course rides are the basics. Please notify in advance for your wish on solo free rides.
- It is also possible to switch to local wheeled transportation instead of riding due to physical condition etc.
- The support car transports unnecessary luggage while riding a bicycle, supply support food, follow finishing.
- The support car moves at the behind of the last rider, basically.
- If you ride out of the recommended course, we do not change the stay point.
- There is no support rider leading or tailgating.
- Those who can join that possible to reach their destination on their own using a smartphone, navigation system, or location search device, or possible on a group ride those who can accompany other members with cooperation.
- If there is a significant delay from the moving of other riders in the group, we will give you instructions on how to move your bicycle to the stopover point, accommodation on the day, and the goal.
- The organizer will present recommended courses in advance, but the support car will not be providing detailed guidance to riders while moving alongside them along the way.
- Bicycles, helmets, puncture kits, bike bags, clothing, cold weather gear changes, etc., please prepare what you need and bring it with you by yourself.
- Please wear brightly colored clothing such as red, yellow, and white. Never wear dark colors such as black or navy blue. We will lend you a red jacket if necessary.
- You are responsible for your own bicycle maintenance and repairs. Please prepare your own spare tubes, maintenance tools, etc.
- standing air pumps and tool boxes will be carried in the support car.
- Please carry a lightweight soft bicycle bag. Carry it with you while riding, so you can move around while riding.
- Depending on where we are staying, bicycle bags may also be used to store your bicycle inside the hotel. Please be sure to carry bicycle bag.
- If you wish to store your bicycle in the accommodation, please help us store it in a bicycle bag when you enter the stay and bring it into the building.
- Hard and semi-soft large cases compatible with airplane rides cannot be transported on the road by the support car.
- If you are joining with a large wheeled device with a hard case or semi-soft case that is compatible with airplane wheeling, after refilling the soft bicycle bag, check-in at the departure/arrival airport and advance transportation to the planned goal point are required.
- Please purchase your own travel insurance and bicycle insurance. Please purchase bicycle insurance with a personal liability amount of 200 million yen or more.
- Please bring your insurance card with you when participating. We check your carry-on the insurance before departure.
- In terms of event, in case injury and illness occur, the participants have no objection to receiving first aid. The organizers will not be held responsible for the method, process, etc.
- The participants in addition to the participants, relatives, heirs, executors, trustees, etc. will not make any claims for damages, etc regardless of the cause, the organizers will be exempt from responsibility in case of accidents, losses, injuries, illnesses, etc. during the event (including aftereffects)
- We eat lunch around noon at the same near restaurant in the same area as possible, depending on the progress of the tour group.
- Lunch, dinner, breakfast, and bathing fees are not included in the ride join fee.
- Support food is also dependent on paid donations from past participants. When you use it, please donate to volunteers or goods.
- Toll road usage fees, sightseeing fees, and travel expenses are not included in the ride participation fee.
- Routes and expenses occurred for group transportation will be decided on-site after discussion, taking into account terrain, weather and progress.
- Transportation costs from your home to the meeting/dissolution location and use of public transportation midway are not included.
- To maintain your health and maintain hygiene, please take a bath, shower, and change of clothes before using public transportation after your ride before going back to your home.
- To avoid inclement weather or traveling in the dark after sunset, we may ask you to turn back, take a shortcut, or take a bicycle onto train move from a station along the way.
- Participants are responsible for safety, course management, bicycle maintenance, cold/heat resistant clothing, measures

- to prevent bicycle stolen , etc.
- If we decide that you cannot participate safely at your own risk, if you are causing a significant nuisance to other participants, or if you are unable to follow the instructions of the staff, you will be asked to leave the venue even midway through.
 - Please note that the participation fee will not be refunded under any circumstances.
 - Sightseeing recommendations: If you arrive early and have time, please go sightseeing on your own.
 - If you have a request for sightseeing in advance, we will take time in advance and provide support, such as temporarily taking over your bicycle.
 - If you consult with us in advance, we will be able to arrange and provide on-site guidance regarding recommended tours for the day before and after ride.

Accommodation, dinner and breakfast

- This is a ride tour in which the organizer decides in advance which lodgings to stay at and travels from one inn to another to sightseeing spots and famous places.
- Accommodation fees are not included in the ride participation fee. It will be included in the cost estimate as a necessary expense at the time of application.
- Recommended accommodation, dinner and breakfast will be arranged by the organizer. Subject to change.
- As much as possible , we prepare at lodging locations bicycle storage in or near the hotel, a large hot spring bath, yukata, dinner and breakfast, a sleeping room, and a power source.
- We eat dinner and breakfast generally as a group at stay , but , if you wish to eat food outside the stay, please contact us in advance.
- If you have dinner, breakfast, or bathing buying outside the building, we will not provide transportation by support car and not accompany. Please move on your own by walking or using public transportation.
- Each day, luggage will be loaded into the support car and the start will be from the meeting point at designated accommodation. Please come to the meeting point by the departure time
- The meeting departure time is basically 7:30 am every morning, but it changes depending on the breakfast service time and driving distance, and will be decided locally.

=====

Dealing BS Travel Service Co., Ltd
Japan Tourism Agency Registered Travel Agent (No. 347) Regular member of the Japan Association of Travel

Planning by
Japan Tourism Organization General Incorporated Association
Representative Director Mikihiro Soma
Kyowa-bld 2F , 3-2-7, Shimbashi, Minato-ku, Tokyo, 105-0004, Japan
Inside BS Travel Service Co., Ltd
Mobile 090-4568-1444
E-Mail soma@jtourism.jp Home-Page <http://jtourism.jp/>

=====