

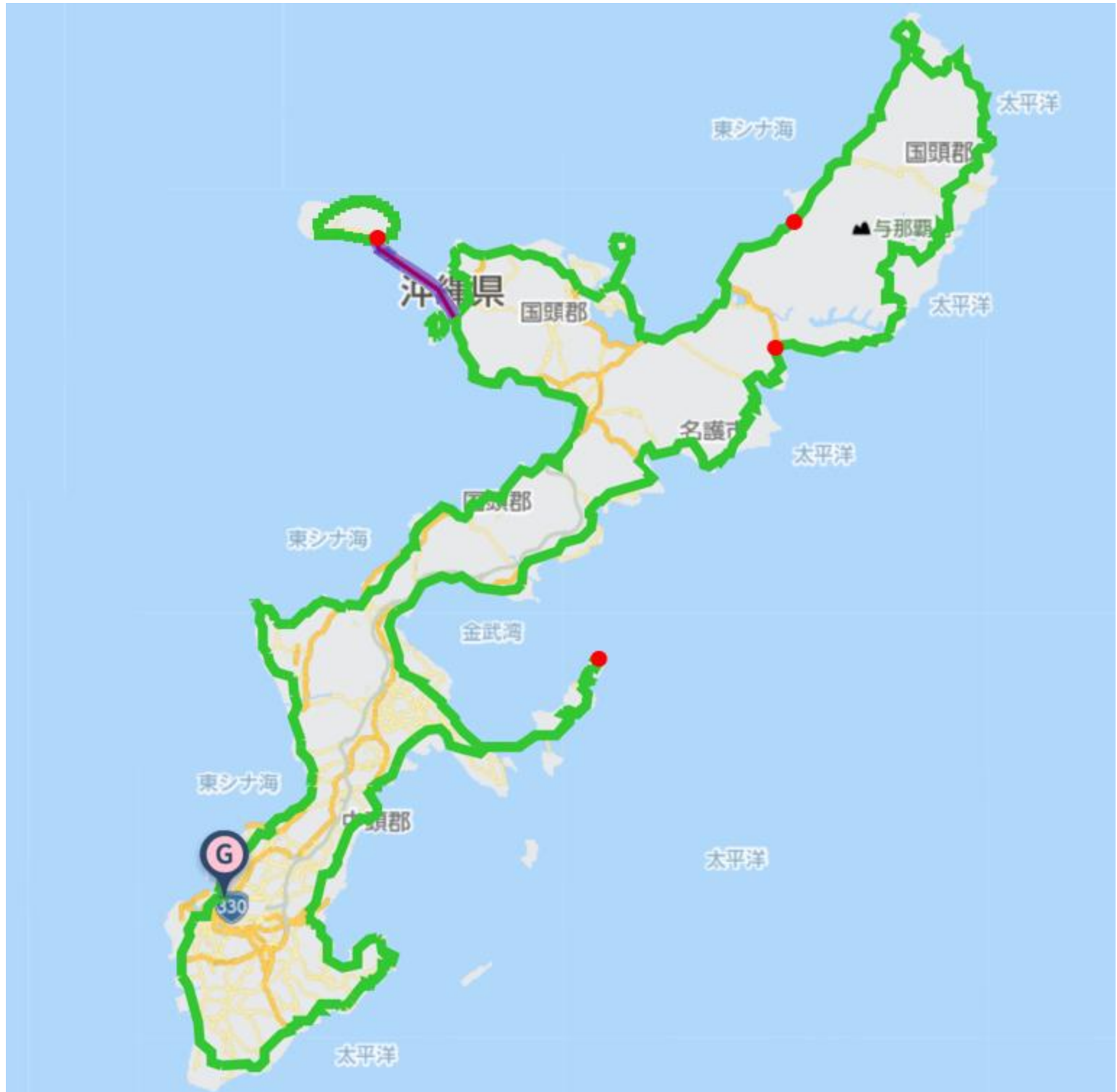
# JTO Okinawa Round Bicycle Journey

Naha start & goal Okinawa island seaside round ride

2026 January 28th～February 1st 5Days Distance 450km Total Gain 5155m

Naha～Iejima island～Kunigami village～Higashi village～Ikei island～Naha

<https://www.navitime.co.jp/coursebuilder/course/fd3db2a252c84198af93f1516923fbe7>





- ① January 28th(Wed) Naha→Iejima island 100km+836m
- ② January 29th(Thu) Iejima island→Kunigami village 78km+788m
- ③ January 30th(Fri) Kunigami village→Higashi village 79km+1325m
- ④ January 31st(Sat) Higashi village→Ikei island 92km+1277m
- ⑤ February 1st(Sun) Ikei island→Naha 101km+929m

January 28th Okinawa Sunrise at 7:15 Sunset at 18:09

## Naha central hotel Rikka Rikka yu spa Start and Goal

〒900-0013 Okinawa pref Naha city Makishi2-16 TEL:098-862-6070 (5-min walk from Miebash st,Yui rail)

Pre post stay Bath Naha central hotel RikkaRikkayu spa Dinner supper「Yuntaku dining」Until 22:00 Breakfast 7:00~



Pre Post stay meal Naha Miebash st. 「Ganaha grill pork」 「Ganaha grill meat」 「Kamadou」 「Hatomajima」



Makishi public market Honen Dotonbori and others possible to carry up from 1st floor Outside Tyida moon



Around Makishi public market breakfast

Po-Tama Uehara parlor Preta Porte(7:00~) Kanatsubo dining(8:00~) Miebash Beef bowl Dotei(24h)



Pre Post stay sightseeing shopping

International street central market street Makishi public market Shuri castle Okinawa museum



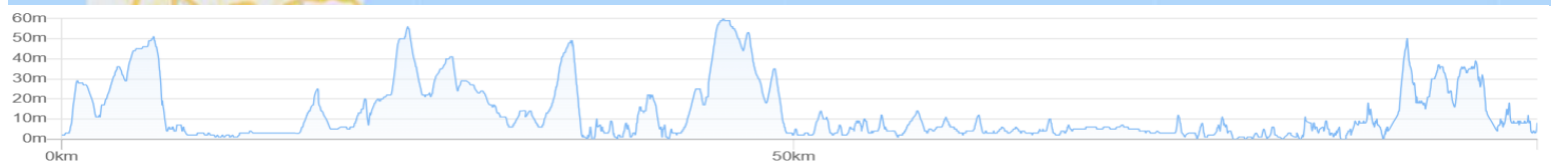
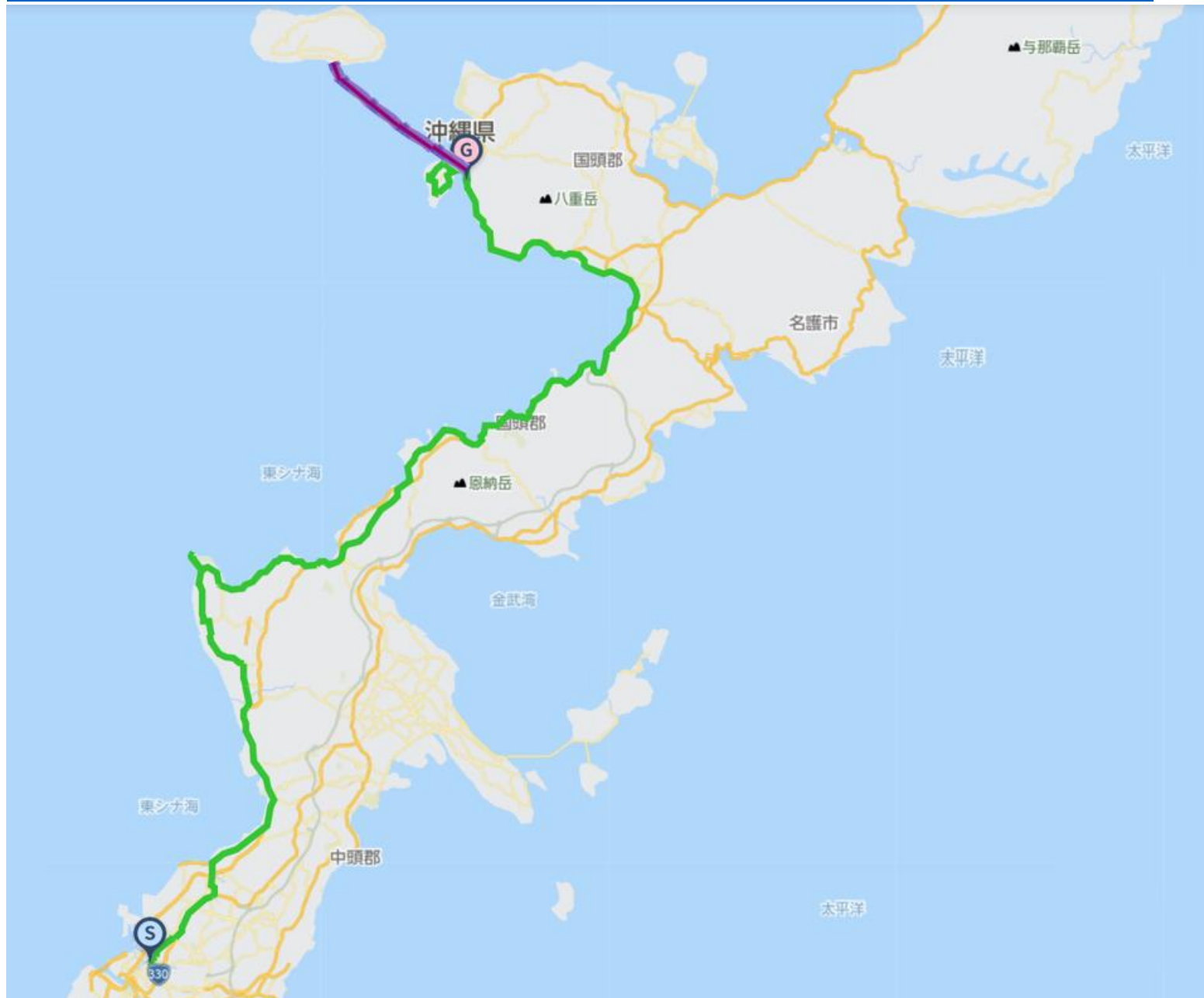
January 28th(Wed) 8:00: Meet~Briefing~ Start

Naha central hotel Rikka Rikka yu spa



1st Naha→Motobu port→Iejima island 100km+836m

<https://www.navitime.co.jp/coursebuilder/course/342934031eda4101a6403b5c343cb7ab>



Public move Naha to Nago to Motobu port sum local bus move each hour. Everyday 2--buses

Sightseeing Ginoza bay park Hokutan park beach Zanza cape Maeda cape



Blue cave Tiger beach Manzamo Manza beach





Kariyushi beach   Busena sea park   Nago castle ruin cherry blossom nago central park sky high observation deck



Sezoko island·big bridge   Sezoko Doteigun land god   Cenotaph   Sezoko beach



Lunch Onna village Manzamo(52km)   Nakamura soba Hanamura soba noodle   Sea grape Manzamo Ryukatei   Ryuho



Nago south(72km)   Danbo ramen noodle   Rice ball COME.   Higashi dining   Kappo Yamabuki   Sakura Akachochin



Nago north   Kaiyo restaurant   Sankakutya Modern old house   A&W Nazakura   Ganaha grill meat



※To gi Iejima island move by ferry.Motobu port①15:00start or②17:00start recommend 17:00 the last ferry  
 15:00(Motobu port)→15:30(Ie port) 17:00(Motobu port)→17:30(Ie port) 30-min cruise  
 ※Judged as impossible to take 17:00 ferry , arrange public move or short cut of Nago deck and Sezokojima island attack  
 ※Until the sunset at 18:09 , possible Shiroyama mt climb , west beach sunset is the recommend.Next AM  
 take round ride Iejima island



Stay Iejina hotel & cottage Kokoro house 〒905-0502 Kunigami gun IemuraHigashiemae641-1 0980-49-5005





Other stay Kariyushi Minami Marco Polo  
Dinner&Breakfast Old house dining「Yui」(In Kokoro house)



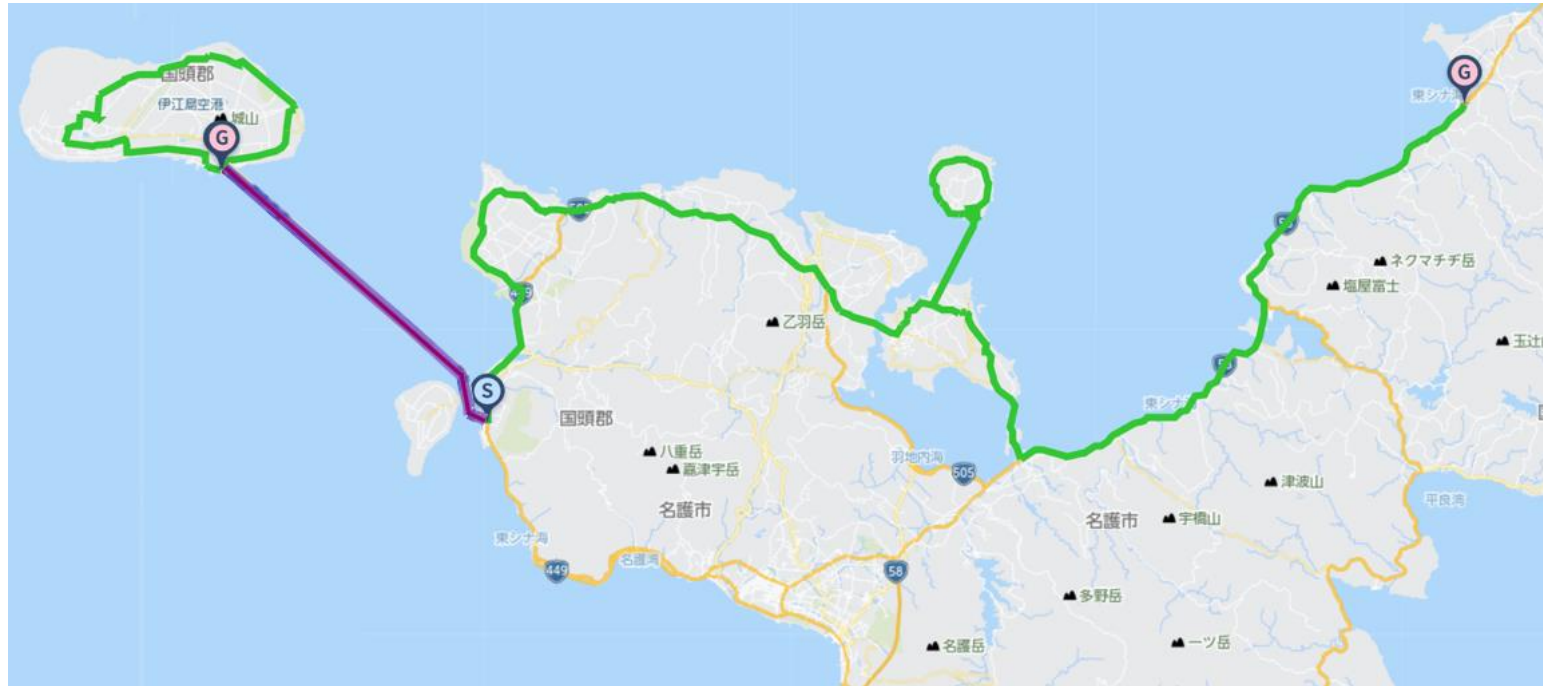
Outside dinner Azumasiya Bozu kitchen Yamata Misaki Nishinsuni Bubasaka Metoro



## 2nd Iejima island→Kunigami village 78km+788m

<https://www.navitime.co.jp/coursebuilder/course/797fb4a157ae44d8983f24c04ca80912>

<https://www.navitime.co.jp/coursebuilder/course/852108cbce2c4ecdb0c5f79e769f7d9b>



Sightseeing Iejima island Shiroyama Tacchu castle mountain





Iejima island round 18km+143m Motobu port →Kunigami village 60km+645m

Iejima Tacchu Castle mountain climbing Anny Pile monument Tower of Fragrant Souls G I beach



Nyatia cave·Ishara green beach Wakide observation deck Ie beach Antiwar Peace museum life treasure house  
Iejima island On the tree KIJIMUNA Nishiimae Niban Gajumaru Movie 「The Army on the Tree」



※Move to Motobu port by ferry.Recommend to start at 8:00 or 10:00(4 ferries per day)

8:00(Ie port)→8:30(Motobu port) 10:00(Ie port)→10:30(Motobu port)30-min cruise

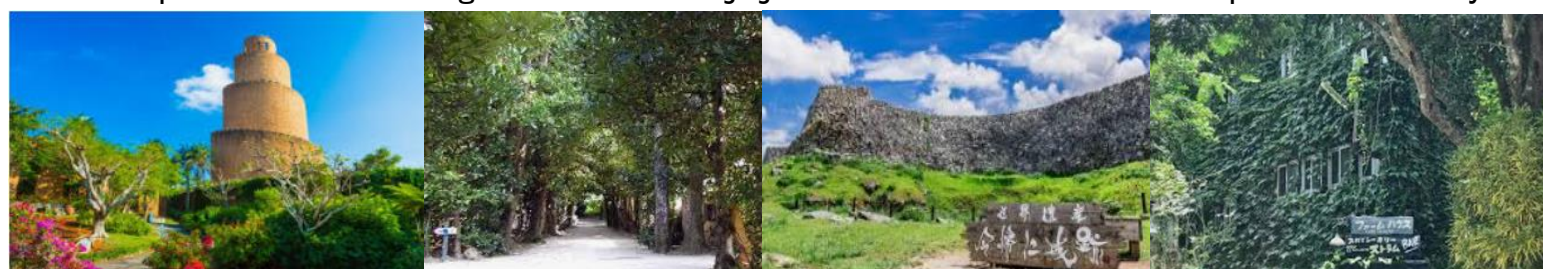
※If impossible to take 10:00 ferry , short cut the sightseeing places and arrange the time.

Public move Motobu port→Nago→Hedona・Kunigami village by Yanbaru bus

Churaumi aquarium (8:30 Open)



Ocean Expo Park Bise Fukugi tree road Nakijinjo castle ruin Shoshi Ontake plant community



Nago Arashiyama observation deck Kourijima island Yagachijima island Yagachi beach



Lunch Churaumi aquarium restaurant Ino Ocean blue Okichan parlor





Bise(9km from Motobu port) Fukugi Hamberg Bokkemon Old house Chanya Kokko dining



Yagachi island Kouri island(22km~36km from Motobu port)

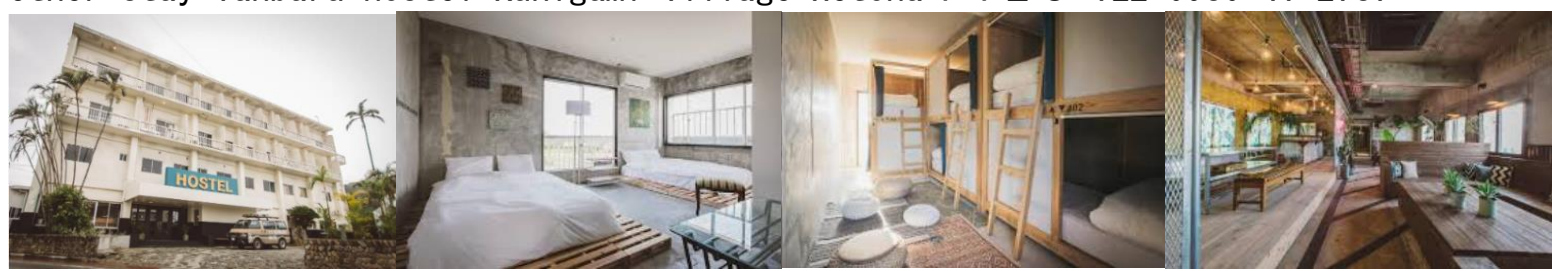
Japanese tiger prawn kitchenTAMAYA Benjamin burger Kitchen terrace Coco Neel Bunchan



Stay Kunigami Kariyushiso〒905-1414 Kunigami village Hanchi269-1 TEL:0980-50-1906



Other stay Yanbaru hostel Kunigami village Hetona 1 4 2 9 TEL:0980-41-2787



Dinner outside Kunigamitei Kunigami village Hanchi9-1 0980-43-5520





Breakfast ▪ Support food Asuka meal box(6:00–14:00) In case staying Yanbaru hostel



Other outside dinner  
Kunigami minato dining Hamakaze rest house Tokkuriya charcoal grill Okumanabi shabushabu



Hanazen sushi Yamaneko dining Bistro Umibatake Shuraku Tworuguwa Yunta izakaya



Other stay Okuma private beach and resort



Okuma private beach and resort restaurant inside Iju Japanese dining  
Adan iron grill Okame Okinawa home cuisine BBQ Beach side buffet



Other stay Hotel Kunigami Yanbaru kuina so Izumiya  
Nuchiujji Yanbaru health care stay Sunset Villa Accorrcraw Okinawa



3rd Kunigami village→Higashison village 79km+1325m

<https://www.navitime.co.jp/coursebuilder/course/90f8cd9f0a534126a59586c9b6b1196f>



Kayauchi Banta Churaumi observation deck Oishi forrest mt. Heto cape Yanbarukuina deck



Henoki dam-Ishu round road Yasuda fishing port Yanbaruikuina life study house Ada farm Yasuda coffee





Tagana Gumui forrest field Ryukyu sphinx Kuina lake Yanbaru study forrest



Lunch Heto cape (23km~30km) Nantoya Oishi mountains contacts Fushibuku cafe  
Oku Yanbaru field Satsukimaru Michinoeki Yanbari pineapple hill Awa



Yanbaru study forrest (53km) Stay buy Oku market Yasuda market Sunrise Higashi



Stay Higashi village Tsutsuji eco park Higashi villageTaira766-1 TEL:0980-43-3300



Eco stay Higashi village Yanbaru Experience hotel Nunganiku  
Higashinoozu Yanbaru lohas Matayoshi coffee farm cottage  
Outside dinner Kaneyan dining



Public move Hedona~Heto cape Kunigami village bus



# 4th Higashi village→Ikejima island 92km+1277m

<https://www.navitime.co.jp/coursebuilder/course/8c281ee60a48431eaaa3fa2a5ee3cbfe>



Lunch : Ginoza village(40km)

Japanese tiger prawn kitchenTAMAYA Marushin soba noodle Soba café Hououboku Ginoza michinoeki



Uruma Ishikawa(60km) Marumitsu dining Churahama dining Yagitosoba Taiyo Ishicha suba





Oshittai plum tree street Kanna beach Kinmu Kannonji Akenajo castle ruin



Uken beach Hamabikajima island Ikei Tairagawa sea road Ikeijima island



Stay : AJ Resort island Ikeijima Urunma city Yonashiro Ikei1286 TEL:098-983-1230



Other stay Ikeijima cottage Uminouta

〒904-2421 Urunma city Yonashiro Ikei471 TEL:098-977-7565 ※BBQ dinner self cooking



Maruyoshi market and stay

Urunma BBQ food buy at Miyagi meat Sanei AEON Michinoeki Ayahashi

Drinks others buy at Seven-Eleven Urunma Shoren Heianna



Public bus move JA Okinawa Yonashiro branch→Ikei Kyodobaiten market(16km)

18:00→18:46 Heianza sogo company

If impossible to pass JA Okinawa Yonashiro branch at 17:30 , please take the local bus



5th Ikeijima island→Naha 101km+929m

<https://www.navitime.co.jp/coursebuilder/course/7e5ed53f30eb4a90a192c53ee64d3125>



Lunch: Hyakuna beach(65km) Café Yabusachi Cafe Lodge Karika dining Tamaki dining



Peace memorial park(74km) Hirata parlor Nangokutei Agu pork





Sightseeing: Shorenjo castle ruin Peace memorial park Okinawa pref peace memorial museum  
Okinawa peace prayer hall



Himeuyuri tower Kyan cape Onoyama park International street



Goal・Bath・Post stay Rikka Rikka Yu Naha central hotel

Public move Ikeijiima island→JA Yonashiromae(7 buses each day)

JA JA Yonashiromae→Naha(11 buses each day) Nanjo city→Naha(5 buses each day)

Next breakfast Naha Tabinoowarinoasagohan Journey end breakfast(7:00~)



**Ride Join Fee(Per day Per person) 17,000JPY(Include Tax)**

**Max Possible Join 1 Orders Minimum Number of riders;5-Riders (Full days ride join)**

Included ride join fee : Travel attendant , Support car accompanying Support food supply(fixed limited)

※NOT INCLUDE Moving fee between your home to the starting point , food , stay , support food more than the limited , public move fee , sightseeing fee are all not included at all.

※Joining on the way , Leaving midway , traveling with one's bicycle using public transportation , you should pay the ride join fee per day for each you made application.

When you apply , we make estimation for ride join fee with including not included costs for ride join fee.

**Contact E-Mail Adress : [soma@jtourism.jp](mailto:soma@jtourism.jp)**

Please apply with the information as below.

※In case of less than minimum number of riders join , make another estimation and conduct the tour.

※Possible to apply for group of less or more number of riders , make estimation.

※Possible to make another plan on order made for another day , longer or shorter distance of course.

※We make estimation as the number of riders , days you ride , ride fee , stay , food , public moving , sightseeing , attendant move・stay , for total costs

※Itinerary changes are possible for individual and group applications. We will create the order custom made project and estimate.

For the order custom made project , let you enjoy for fully , we will create a plan for each



group.

✂In case of terrible weather , body condition , seem impossible to finish riding on the day , move to the mid place or stay by using public move and support car.

Up to the formal application as below , let you show the personal information.

•The day you ride •Your name •Sex •date , month , year of birth , age •Adress •Handy phone number •E-Mail address

•Stay and food wishes

✂We select and reserve the stay and foods. Personal arrangements are not possible by each riders.

✂Please give the wishes for shared room for men or women , single , twin , foods.

✂Please stay in the stays at the organizer' s designated stays.

In some case , we cannot meet your request and change the stays on designated.

•Please let me know the pre and post ride sightseeing wishes , settings.

•Possible to contact on the ride day (handy phone)&emergency contact (handy phone possible to contact to the substitute person ✂Other than the person riders yourself)

•Experience of your biggest riding , distance(km), Elevation gained(m)

implementation(Western calendar) season(month, spring summer fall winter)

area(country , prefectures, course name)

If we judge that you do not have enough experience to participate in this project, we may decline your participation.

## Rental bicycle

Possible to prepare rental road-bicycle , cross-bicycle

If you wish to have rental bicycle , please apply in advance. Request together for Tokyo cycling tour and rental cycle , the partnership ship company.

① Height(cm)②weight(kg) ③bicycle model you wish ④Helmet ⑤grab ⑥pedal (binding or flat) ⑦Bicycle receiving place

Please let me know them when apply. Sometime , it may not turn out as you wish. Prepare wears and shoes by yourself.

I estimate rental price up to the information

Implementation notification;After recruitment deadline to some days before the starting , number of riders , weather forecast , judge the implementation and contact directly to the riders.

Refund ; In case of impossible to hold the phan , we pay back Amount excluding expenses such as fees from ride participation fee.

If the participant is unable to participate due to circumstances , paid ride participation fees will not be returned.

If it becomes impossible to run due to weather or local situation judgment after the start , paid ride participation fees will not be returned.

•Take ride onto the tour recommended courses with group rides and solo freerides

•There is no competition for time. Riders work together to reach the goal. Awards will not be given based on ranking

•There will be no traffic control around the venue. Please follow the local traffic rules.

•Group rides/recommended course rides are the basics. Please notify in advance for your wish on solo free rides.

•It is also possible to switch to local wheeled transportation instead of riding due to physical condition etc.

•The support car transports unnecessary luggage while riding a bicycle , supply support food , follow finishing.

•The support car moves at the behind of the last rider, basically.

•If you ride out of the recommended course , we do not change the stay point.

•There is no support rider leading or tailgating.

•Those who can join that possible to reach their destination on their own using a smartphone, navigation system, or location search device , or possible on a group ride those who can accompany other members with cooperation.

•If there is a significant delay from the moving of other riders in the group , we will give you instructions on how to



move your bicycle to the stopover point, accommodation on the day, and the goal.

- The organizer will present recommended courses in advance , but the support car will not be providing detailed guidance to riders while moving alongside them along the way.
  - Bicycles, helmets, puncture kits, bike bags, clothing, cold weather gear changes, etc , please prepare what you need and bring it with you by yourself.
  - Please wear brightly colored clothing such as red, yellow, and white. Never wear dark colors such as black or navy blue. We will lend you a red jacket if necessary.
  - You are responsible for your own bicycle maintenance and repairs. Please prepare your own spare tubes, maintenance tools, etc.
  - standing air pumps and tool boxes will be carried in the support car.
  - Please carry a lightweight soft bicycle bag. Carry it with you while riding, so you can move around while riding.
  - Depending on where we are staying, bicycle bags may also be used to store your bicycle inside the hotel. Please be sure to carry bicycle bag.
  - If you wish to store your bicycle in the accommodation , please help us store it in a bicycle bag when you enter the stay and bring it into the building.
  - Hard and semi-soft large cases compatible with airplane rides cannot be transported on the road by the support car.
  - If you are joining with a large wheeled device with a hard case or semi-soft case that is compatible with airplane wheeling, after refilling the soft bicycle bag , check-in at the departure/arrival airport and advance transportation to the planned goal point are required.
  - Please purchase your own travel insurance and bicycle insurance. Please purchase bicycle insurance with a personal liability amount of 200 million yen or more.
  - Please bring your insurance card with you when participating. We check your carry-on the insurance before departure.
  - In terms of event , in case injury and illness occur , the participates have no objection to receiving first aid. The organizers will not be held responsible for the method, process, etc.
  - The participates in addition to the participants, relatives, heirs, executors, trustees, etc. will not make any claims for damages, etc regardless of the cause, the organizers will be exempt from responsibility in case of accidents, losses, injuries, illnesses, etc. during the event (including aftereffects)
  - We eat lunch around noon at the same near restaurant in the same area as possible, depending on the progress of the tour group.
  - Lunch, dinner, breakfast, and bathing fees are not included in the ride join fee.
  - Support food is also dependent on paid donations from past participants. When you use it, please donate to volunteers or goods.
  - Toll road usage fees, sightseeing fees, and travel expenses are not included in the ride participation fee.
  - Routes and expenses occurred for group transportation will be decided on-site after discussion, taking into account terrain, weather and progress.
  - Transportation costs from your home to the meeting/dissolution location and use of public transportation midway are not included.
  - To maintain your health and maintain hygiene , please take a bath, shower, and change of clothes before using public transportation after your ride before going back to your home.
  - To avoid inclement weather or traveling in the dark after sunset, we may ask you to turn back, take a shortcut, or take a bicycle onto train move from a station along the way.
  - Participants are responsible for safety, course management, bicycle maintenance, cold/heat resistant clothing, measures to prevent bicycle stolen , etc.
  - If we decide that you cannot participate safely at your own risk, if you are causing a significant nuisance to other participants, or if you are unable to follow the instructions of the staff, you will be asked to leave the venue even midway through.
  - Please note that the participation fee will not be refunded under any circumstances.
  - Sightseeing recommendations: If you arrive early and have time, please go sightseeing on your own.
  - If you have a request for sightseeing in advance, we will take time in advance and provide support, such as temporarily taking over your bicycle.
  - If you consult with us in advance, we will be able to arrange and provide on-site guidance regarding recommended tours for the day before and after ride.
- Accommodation, dinner and breakfast
- This is a ride tour in which the organizer decides in advance which lodgings to stay at and travels from one inn to another to sightseeing spots and famous places.



- Accommodation fees are not included in the ride participation fee. It will be included in the cost estimate as a necessary expense at the time of application.
- Recommended accommodation, dinner and breakfast will be arranged by the organizer. Subject to change.
- As much as possible , we prepare at lodging locations bicycle storage in or near the hotel, a large hot spring bath, yukata, dinner and breakfast, a sleeping room, and a power source.
- We eat dinner and breakfast generally as a group at stay , but , if you wish to eat food outside the stay, please contact us in advance.
- If you have dinner, breakfast, or bathing buying outside the building, we will not provide transportation by support car and not accompany. Please move on your own by walking or using public transportation.
- Each day, luggage will be loaded into the support car and the start will be from the meeting point at designated accommodation. Please come to the meeting point by the departure time
- The meeting departure time is basically 7:30 am every morning, but it changes depending on the breakfast service time and driving distance, and will be decided locally.

=====

Dealing BS Travel Service Co., Ltd  
Japan Tourism Agency Registered Travel Agent (No. 347) Regular member of the Japan Association of Travel

Planning by  
Japan Tourism Organization General Incorporated Association  
Representative Director Mikihiro Soma  
Kyowa-bld 2F , 3-2-7, Shimbashi, Minato-ku, Tokyo, 105-0004, Japan  
Inside BS Travel Service Co., Ltd  
Mobile 090-4568-1444  
E-Mail [soma@jtourism.jp](mailto:soma@jtourism.jp) Home-Page <http://jtourism.jp/>

=====

Japan bicycle journey with stays

- 2025: <https://jtourism.jp/2020/wp-content/uploads/2025/09/JTOBicycleJourneys2025E.pdf>
- 2026: <https://jtourism.jp/2020/wp-content/uploads/2025/09/JTOBicycleJourneys2026E.pdf>
- 2027: <https://jtourism.jp/2020/wp-content/uploads/2025/09/JTOBicycleJourneys2027E.pdf>

One Day Ride Around Tokyo

<https://jtourism.jp/2020/wp-content/uploads/2024/09/JapanOneDayRideAroundTokyo.pdf>