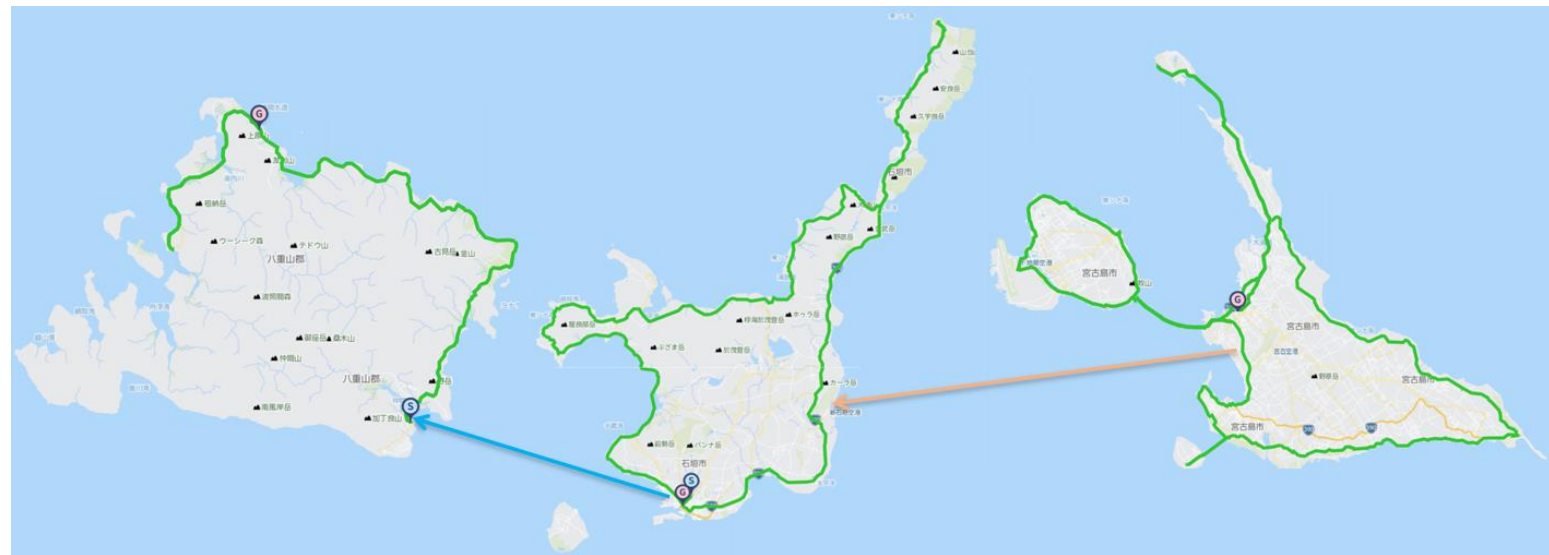


JTO Sakishima Islands Bicycle Journey

Miyako ~ Ishigaki ~ Iriomote Islands

2026 January 22nd (Thu) ~ 25th (Sun) 4-Stages

Distance 340km + Total Gain 4206m



2026 January 22nd (Thu) Miyako island Sunrise at 7:24 Sunset 18:16

- ① 22nd (Thu) Irabu → Miyako north west → Ikema island 88km + 928m
- ② 23rd (Fri) Miyako island round & Kuruma island 76km + 1117m
- ③ 24th (Sat) Ishigaki island round 115km + 1403m
- ④ 25th (Sun) Iriomote island half round 61km + 758m

Move recommend Haneda airport 7:50 → Miyako island airport 11:05 and others 3-airplane each day

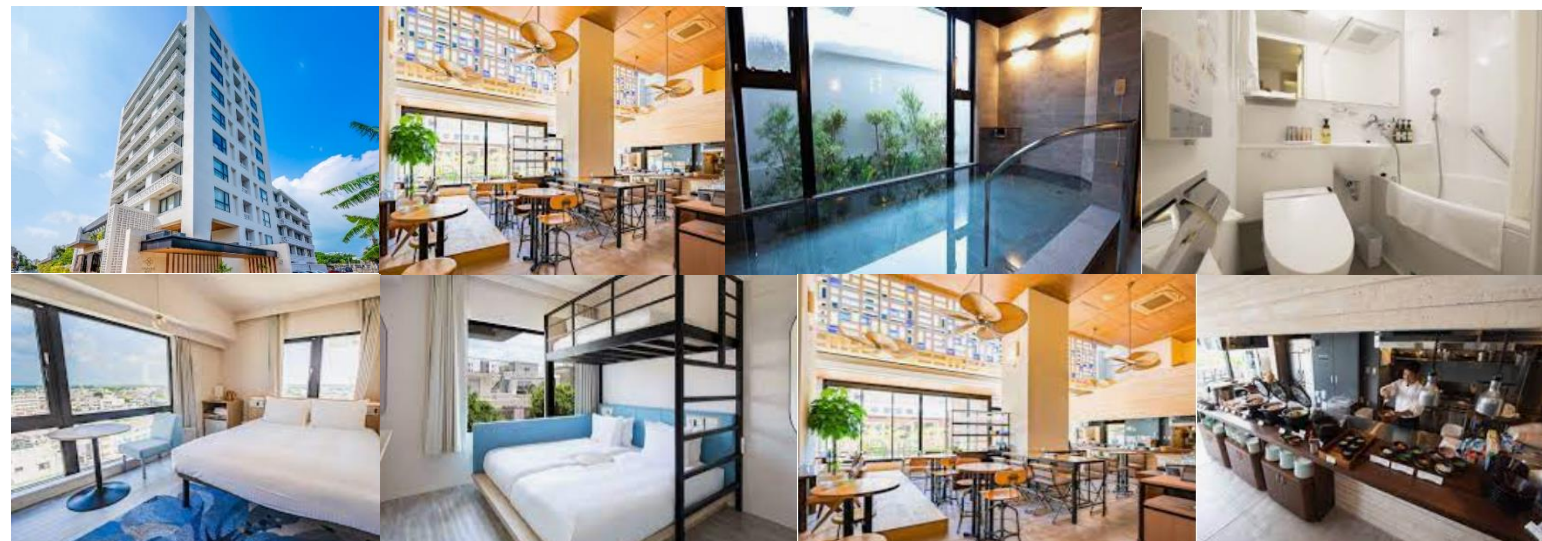
Kansai International Airport 7:40 → Miyako island airport 10:15 and others 3-airplane each day

Others Sendai airport, Chubu airport, Naha airport have direct line

Meet and pre stay: Tabino Hotel Lit Miyakojima January 22nd (Thu) 8:30

〒906-0012 Okinawa pref Miyakojima city Taira Nishiri 596

TEL : 0980-75-3100



Meals inside hotel Dinner:Hotel course Breakfast「The Gozero Grill」 Buffet(7:00～)



Meals outside hotel(Around Tabiho hotel) Agu pork & cristal stew Butasho Miyakojima tei Meme goat Captain Merian



Restaurant Nomura Abaraju Kappo Manpuku Uminosachi seafood



Eel Taiyo Sushi Masa Myaku market Umarizuma ancient style dining



Pre stay sightseeing recommend tropical botanical garden Kamama area park Miyakojima city general museum



Okamishima island Ukan Kariyusu cruise ferry (4-ferries per day 15-minutes cruise) Observation Opuyu dining



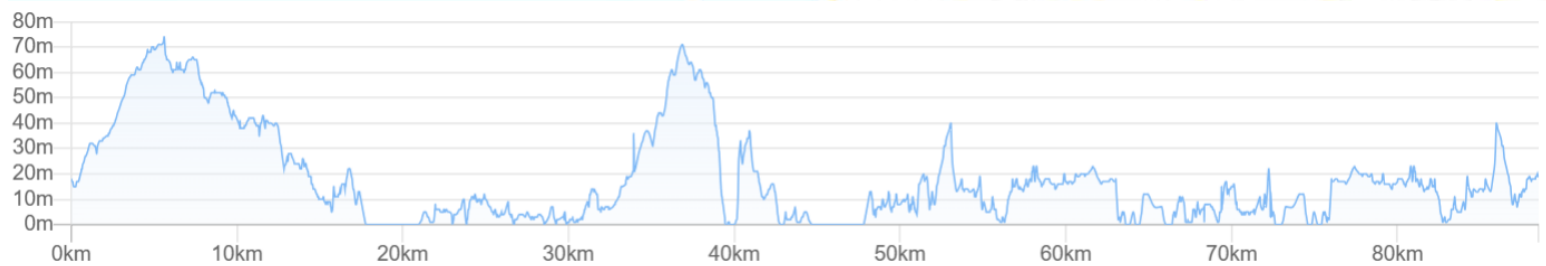
Outside breakfast Leon(24H): 400m fron Tabino hotel Convinience: Family mart Miyako Makuramu street



Other stay Hotel southern coast Hotel385 ※Support car rental , receive and return at Miyakojima island airport

1st day Irabu→Miyako north west→Ikema island 88km+928m

<https://www.navitime.co.jp/coursebuilder/course/4f72f50302544d088933a80a702c66bc>



Meet at 8:30 Tabino hotel Lit Miyakojima Start at 9:00

※Pre stay meet, if wish , inland「Ueno Otake castle park observation deck(6km&elevation100m)」 attack ride.

※Pre staymeet if wish , 「Ueno Otake castle park observation deck」see sunrise take car support.



Lunch Miyakojima central(17km 50km) Yukishio steak DOUGS BURGER Jinkuya Kosha soba noodle



Irabu island(29km) Blue turtle Ryukyu Irabu soba noodle Kame Irikunya Soki tei



Oura bay(55km) Café Karakara Namatsu Sea view restaurant Roko Manje SHISA'S CAFE&BBQ



Sightseeing and rest Irabujima island Irabu big bridge Sawada beach Makiyama observation deck



Painagama beach Sunayama beach Shimajiri manlobe woods Ikema big bridge



Ikema island Ikema wet land Ikema lighthouse Miyakojima island sunset beach



Stay:Tabino Hotel Lit Miyakojima 〒906-0012 Okinawa pref Miyakojima city Taira Nishiri596 TEL : 0980-75-3100

※Dinner inside hotel or outside hotel as written. Please wish in advance.

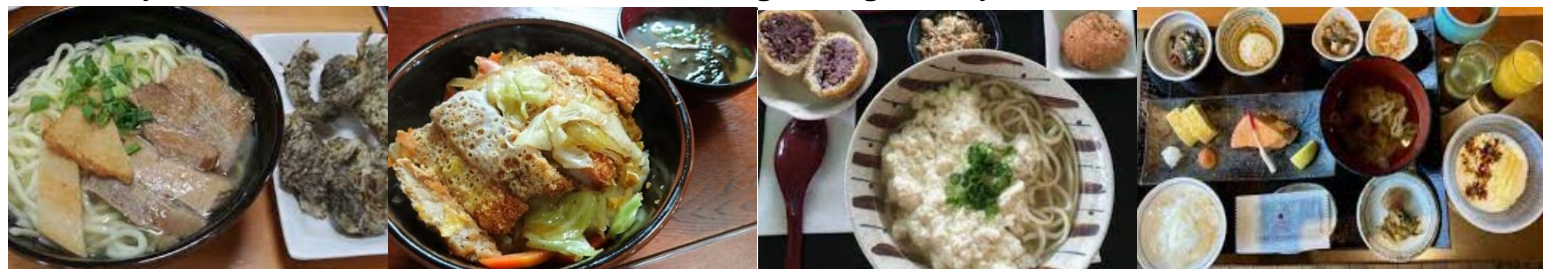
2nd Miyako island round & Kuruma island 76km + 1117m

Tabino Hotel Lit Miyakojima Start at 8:00 (If wishing sunrise view , 7:00 start and view from Tairaohashi bridge.)

<https://www.navitime.co.jp/coursebuilder/course/094f119b9ad04a5992ac686c2ddd85bc>



Lunch Miyako island west south(46km) Hirochan dining mirage Kaiiaya Yaebishi



Kurumajima island(54km) Marukami Hanakaze Yakka yakka Rainbow fish



※If seems impossible to start Tabino Hotel Lit Miyakojima at 15:00 , take short cut of Kurumajima island.

Sightseeing and rest Higa road park East Hennazaki cape Nakaharalimestone cave Gnu horse ranch



Shigira beach Ueno Germany culture village Kuruma big bridge Kuruma islaand



「Tabino Hotel」Bath take if wish&Luggage pick up～Move to Miyakojima airport(Hotel startat 15:30) 2.6km+45m
Miyako Kyoei bus Shinsato Miyakoku line Motoueno bus stop: 300m from hotel(16:02)→Miyakojima airport(16:20)
Miyakojima airport→Ishigakijima airport move 17:45→18:20

RAC: Ryukyu Air Commuter line Possible to carry bicycle with taking in rinko bicycle bag.

Naha office: 098-840-1531 Miyako storage office: 0980-72-1351

Prepare rent car at Toyota rent car Ishigaku airport 8:00-19:00

Ishigaki airport to Central Ishigaki city:

Bus move: Higashi carry bus 4th line bus Ishigaki airport～Ishigaki port remote island bus terminal 18:30 : 19:00 start 25min

Ishigaki port remote island bus terminal～Art hotel 1.5km 20minutes walk

Move by taxi or Bicycle: Ishigaki airport→Art hotel Ishigakijima island 12km+90m



Stay Art hotel Ishigakijima 〒907-0022 Okinawa pref Ishigaki city Okawa 559 TEL: 0980-83-3311



Dinner in Art hotel Ishigakishima island All day diningAquarius Grill meat Chinese Harusa



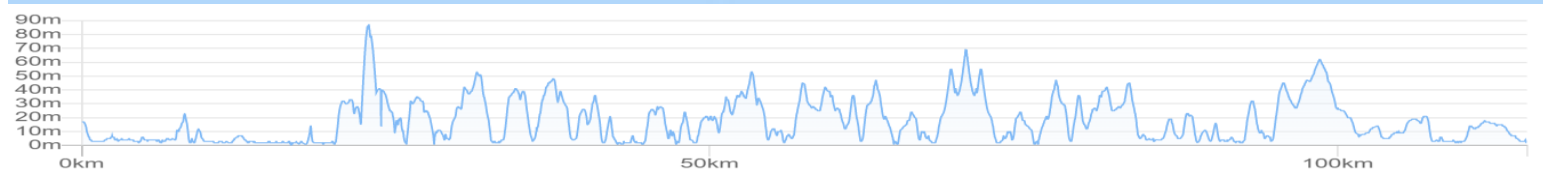
Other stay Comfort hotel Ishigakijima Vessel hotel Ishigakijima

3rd Ishigakijima island round 115km+1403m

Art hotel Ishigakijima Start and Goal 7:20 Start(Start with sunrise)

Art hotel Ishigakijima Breakfasr buffet 6:00~

<https://www.navitime.co.jp/coursebuilder/course/0117883a4dc04c5b9d13fafa0d7ccb8d>



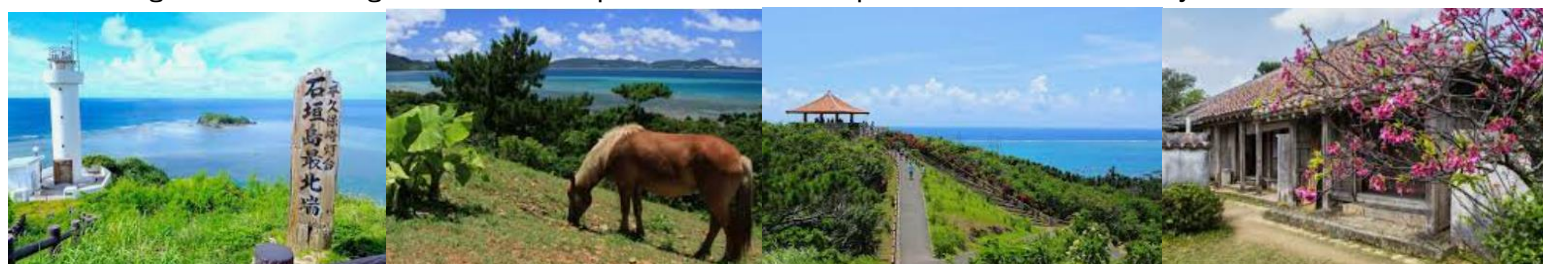
Lunch North East Forestale Uno(51km) Funakoshi Funakuya dining(55km) Aragaki(57km) Akashi(60km)



Sightseeing Taketomi island(distant view) Ryukyu Kannonzaki lighthouse Kabira bay Akashi para world(sea elevation 140m)



Hirakubo light house Ishigaki island horse park Tamatori cape observation deck Miyaraduouchi house



Banna park ※Banna park and Banna hill is the attack ride for5km+200m.Recommend view sunset and stars.



Stay in Art hotel Ishigakishima(Consecutive nights stay) Get back rent car until 19:00 , back to hotel by bus or taxi
Dinner(Around hotel outside) Adantei Gyushin beef Est ! Est ! ! Est ! ! ! Restaurant theater Ajisai



Misaki beef grill Paikaji island meals Arimuta garden & music Hitoshi

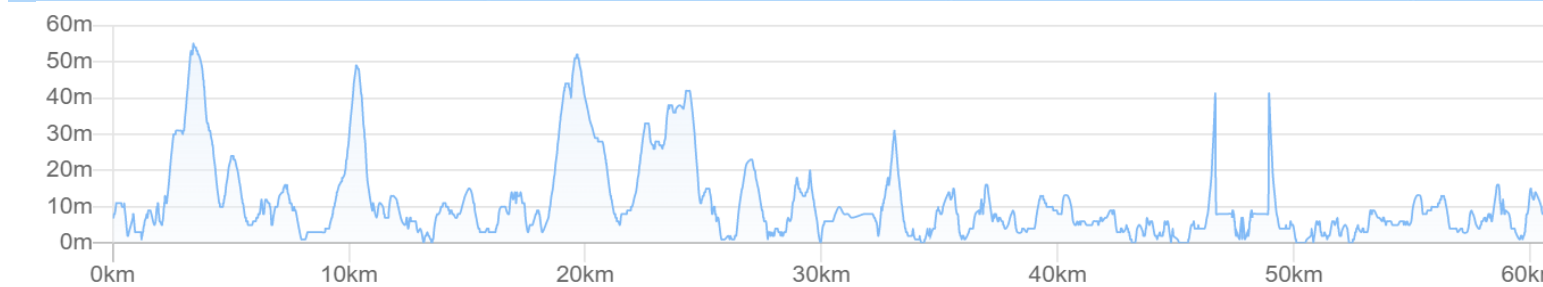
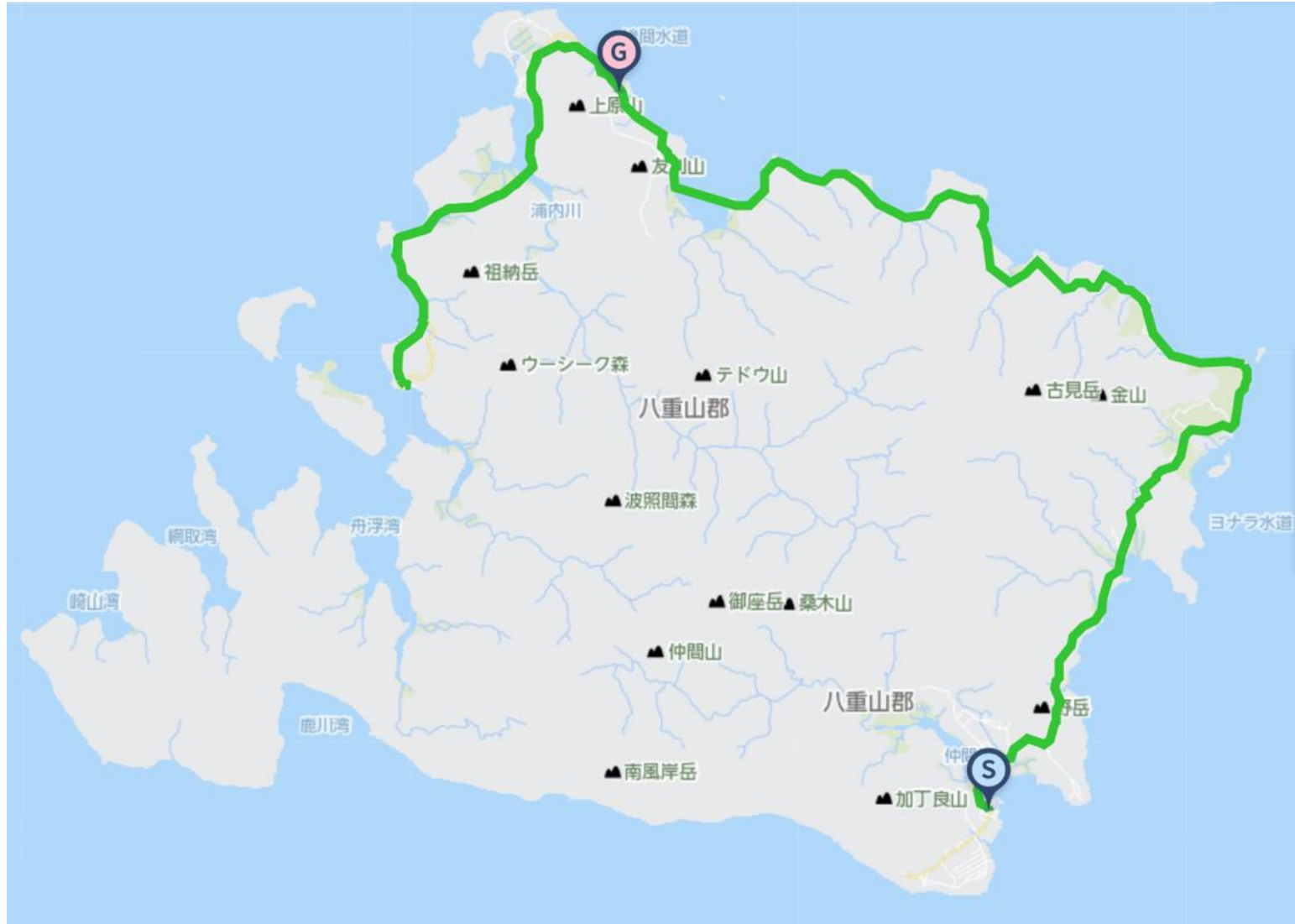


Kunatsuyu Yaeyama soba noodle Southern island PAPOIYA Steak and restaurant Kabusa dining



4th Iriomote island half round 61km+758m(Include Shirahama beach attack)

<https://www.navitime.co.jp/coursebuilder/course/e75a9c8e1e1844ef9f630cf2e020e41>



Morning Breakfast recommend Café Gold On(24H) Family mart Ishigaki Southern gate bridge



Ishigaki port →Iriomote island Ohara port Move by ferry ※Need check of the moving ferry at the morning
7:00Start(Recommend) 8:30(Prepare)Yaeyama sightseeing ferry 0980-82-5010 7-ferrys per day 40-50 min move
Yamaneko rent car Iriomote Ohara shop 8:00~19:00 Pick up rent car



Lunch Uehara port(34km 60km)

Laugh la garden Densa dining Lunch house TAMAGO Parler Mimi(Noodle and Mango)



Star sand beach~White beach(48km) Paris dining Iriomoteya meat Hiyoko island curry Restaurant Shirahama



Sightseeing and rest water buffalo cart Yufushima island Kohamajima(distant view) Omisha road park

※From Iriomote island Furumi to Yufushima island , possible to go by water buffalo regular cart(every 30 min 15-min move)



Nakano beach Star sand beach Dodomari beach(Moon beach) Niimoriya house



The support car , drop off at Yamaneko rent car Uehara port office

Uehara port→shigaki port 14:30Start (Other starts at 16:30 17:10 18:20) 50-minutes move

15:00~ Ishigaki port~Art hotel Luggage pick up & Bath(For sanitation , bath please before taking on airplane)

16:53 Bus(Higashi Unyu) Art hotel Ishigakijimaa~Ishigaki airport17km+126m 35minutes move

Local bus Ishigaki port →Ishigaki airport Every00minute・30minute starts



Dinner at Ishigaki airport Beef steak Yaeyama soba noodle Local cuisines

Meal box Onigiri rice ball ANA FESTA JAL group Coralway Ishigaki island Mirimiru Honpo

SKY CAFE Ishinagi dining Yaima village Minamoto seafood island dining Onisasa Chinen



Recommend airplanes Ishigaki airport19:20→Haneda airport22:00 Japan Air Lines974
 Ishigaki airport20:05→Kansai International Airport22:15 Japan Tran Ocean Air 086
 Ishigaki airport→Naha airport Some air lines each day Possible to join JTO Okinawa island round bicycle journey



Post stay recommend Iriomote island Uehara port Mariudo Funauki Kamadoma pension



Post stay sightseeing Iriomote island Pinai Salla fall Maryudo fall Sangara fall Funauki ferry Funauki Ida port
 ※For the post stay sightseeing , Impossible to see all falls just at one day.
 Funauki regular ferry timetable Funauki port⇄Shirahama port(10-minutes cruise)
 [Shirahama start]08:45/10:55/13:20/15:50/17:50 [Funauki start]08:15/10:25/12:50/15:30/17:10
 (From December to February the first ferry starts at 07:50)



Kohama iusland Taketomi island
 Yasuei sightseeing ferry Ishigaki(8:00)→Kohamajima island(8:30) Kohamajima trec(16km round) Lunch at the middle
 Kohama island(14:40)→Taketomi island(15:00) Taketomi island trec(6km round) Taketomi island(16:50)→Ishigaki(17:05)



Ishigaki island Yaeyama museum Yaeyama peace memorial hall Ishigaki island observatory (Monday off)
 GushikenYoko memorial hall



Barabido sightseeing farm Furisuto plateau ruin Ishigaki Yaima village Minsa craft museum



Ride Join Fee(Per day Per person) 17,000JPY(Include Tax)

Max Possible Join 1 Orders Minimum Number of riders;5-Riders (Full days ride join)

Included ride join fee : Travel attendant , Support car accompanying Support food supply(fixed limited)

※NOT INCLUDE Moving fee between your home to the starting point , food , stay , support food more than the limited , public move fee , sightseeing fee are all not included at all.

※Joining on the way , Leaving midway , traveling with one's bicycle using public transportation , you should pay the ride join fee per day for each you made application.

When you apply , we make estimation for ride join fee with including not included costs for ride join fee.

Contact E-Mail Adress : soma@jtourism.jp

Please apply with the information as below.

※In case of less than minimum number of riders join , make another estimation and conduct the tour.

※Possible to apply for group of less or more number of riders , make estimation.

※Possible to make another plan on order made for another day , longer or shorter distance of course.

※We make estimation as the number of riders , days you ride , ride fee , stay , food , public moving , sightseeing , attendant move・stay , for total costs

※Itinerary changes are possible for individual and group applications. We will create the order custom made project and estimate.

For the order custom made project , let you enjoy for fully , we will create a plan for each group.

※In case of terrible weather , body condition , seem impossible to finish riding on the day , move to the mid place or stay by using public move and support car.

Up to the formal application as below , let you show the personal information.

・The day you ride ・Your name ・Sex ・date , month , year of birth , age ・Adress ・Handy phone number ・E-Mail address

・Stay and food wishes

※We select and reserve the stay and foods. Personal arrangements are not possible by each riders.

※Please give the wishes for shared room for men or women , single , twin , foods.

※Please stay in the stays at the organizer's designated stays.

In some case , we cannot meet your request and change the stays on designated.

・Please let me know the pre and post ride sightseeing wishes , settings.

・Possible to contact on the ride day (handy phone) & emergency contact (handy phone possible to contact to the substitute person ※Other than the person riders yourself)

・Experience of your biggest riding , distance(km), Elevation gained(m)

implementation(Western calendar) season(month, spring summer fall winter)

area(country , prefectures, course name)

If we judge that you do not have enough experience to participate in this project, we may decline your participation.

Rental bicycle

Possible to prepare rental road-bicycle , cross-bicycle

If you wish to have rental bicycle , please apply in advance. Request together for Tokyo cycling tour and rental cycle , the partnership ship company.

① Height(cm)②weight(kg) ③bicycle model you wish ④Helmet ⑤grab ⑥pedal (binding or flat) ⑦Bicycle receiving place
Please let me know them when apply. Sometime , it may not turn out as you wish. Prepare wears and shoes by yourself.
I estimate rental price up to the information

Implementation notification; After recruitment deadline to some days before the starting , number of riders , weather forecast , judge the implementation and contact directly to the riders.

Refund ; In case of impossible to hold the plan , we pay back Amount excluding expenses such as fees from ride participation fee.

If the participant is unable to participate due to circumstances , paid ride participation fees will not be returned.

If it becomes impossible to run due to weather or local situation judgment after the start , paid ride participation fees will not be returned.

- Take ride onto the tour recommended courses with group rides and solo freerides
- There is no competition for time. Riders work together to reach the goal. Awards will not be given based on ranking
- There will be no traffic control around the venue. Please follow the local traffic rules.
- Group rides/recommended course rides are the basics. Please notify in advance for your wish on solo free rides.
- It is also possible to switch to local wheeled transportation instead of riding due to physical condition etc.
- The support car transports unnecessary luggage while riding a bicycle , supply support food , follow finishing.
- The support car moves at the behind of the last rider, basically.
- If you ride out of the recommended course , we do not change the stay point.
- There is no support rider leading or tailgating.
- Those who can join that possible to reach their destination on their own using a smartphone, navigation system, or location search device , or possible on a group ride those who can accompany other members with cooperation.
- If there is a significant delay from the moving of other riders in the group , we will give you instructions on how to move your bicycle to the stopover point, accommodation on the day, and the goal.
- The organizer will present recommended courses in advance , but the support car will not be providing detailed guidance to riders while moving alongside them along the way.
- Bicycles, helmets, puncture kits, bike bags, clothing, cold weather gear changes, etc , please prepare what you need and bring it with you by yourself.
- Please wear brightly colored clothing such as red, yellow, and white. Never wear dark colors such as black or navy blue. We will lend you a red jacket if necessary.
- You are responsible for your own bicycle maintenance and repairs. Please prepare your own spare tubes, maintenance tools, etc.
- standing air pumps and tool boxes will be carried in the support car.
- Please carry a lightweight soft bicycle bag. Carry it with you while riding, so you can move around while riding.
- Depending on where we are staying, bicycle bags may also be used to store your bicycle inside the hotel. Please be sure to carry bicycle bag.
- If you wish to store your bicycle in the accommodation , please help us store it in a bicycle bag when you enter the stay and bring it into the building.
- Hard and semi-soft large cases compatible with airplane rides cannot be transported on the road by the support car.
- If you are joining with a large wheeled device with a hard case or semi-soft case that is compatible with airplane wheeling, after refilling the soft bicycle bag , check-in at the departure/arrival airport and advance transportation to the planned goal point are required.
- Please purchase your own travel insurance and bicycle insurance. Please purchase bicycle insurance with a personal liability amount of 200 million yen or more.
- Please bring your insurance card with you when participating. We check your carry-on the insurance before departure.
- In terms of event , in case injury and illness occur , the participates have no objection to receiving first aid. The organizers will not be held responsible for the method, process, etc.
- The participates in addition to the participants, relatives, heirs, executors, trustees, etc. will not make any claims for damages, etc regardless of the cause, the organizers will be exempt from responsibility in case of accidents, losses, injuries, illnesses, etc. during the event (including aftereffects)
- We eat lunch around noon at the same near restaurant in the same area as possible, depending on the progress of the

- tour group.
- Lunch, dinner, breakfast, and bathing fees are not included in the ride join fee.
 - Support food is also dependent on paid donations from past participants. When you use it, please donate to volunteers or goods.
 - Toll road usage fees, sightseeing fees, and travel expenses are not included in the ride participation fee.
 - Routes and expenses occurred for group transportation will be decided on-site after discussion, taking into account terrain, weather and progress.
 - Transportation costs from your home to the meeting/dissolution location and use of public transportation midway are not included.
 - To maintain your health and maintain hygiene , please take a bath, shower, and change of clothes before using public transportation after your ride before going back to your home.
 - To avoid inclement weather or traveling in the dark after sunset, we may ask you to turn back, take a shortcut, or take a bicycle onto train move from a station along the way.
 - Participants are responsible for safety, course management, bicycle maintenance, cold/heat resistant clothing, measures to prevent bicycle stolen , etc.
 - If we decide that you cannot participate safely at your own risk, if you are causing a significant nuisance to other participants, or if you are unable to follow the instructions of the staff, you will be asked to leave the venue even midway through.
 - Please note that the participation fee will not be refunded under any circumstances.
 - Sightseeing recommendations: If you arrive early and have time, please go sightseeing on your own.
 - If you have a request for sightseeing in advance, we will take time in advance and provide support, such as temporarily taking over your bicycle.
 - If you consult with us in advance, we will be able to arrange and provide on-site guidance regarding recommended tours for the day before and after ride.

Accommodation, dinner and breakfast

- This is a ride tour in which the organizer decides in advance which lodgings to stay at and travels from one inn to another to sightseeing spots and famous places.
- Accommodation fees are not included in the ride participation fee. It will be included in the cost estimate as a necessary expense at the time of application.
- Recommended accommodation, dinner and breakfast will be arranged by the organizer. Subject to change.
- As much as possible , we prepare at lodging locations bicycle storage in or near the hotel, a large hot spring bath, yukata, dinner and breakfast, a sleeping room, and a power source.
- We eat dinner and breakfast generally as a group at stay , but , if you wish to eat food outside the stay, please contact us in advance.
- If you have dinner, breakfast, or bathing buying outside the building, we will not provide transportation by support car and not accompany. Please move on your own by walking or using public transportation.
- Each day, luggage will be loaded into the support car and the start will be from the meeting point at designated accommodation. Please come to the meeting point by the departure time
- The meeting departure time is basically 7:30 am every morning, but it changes depending on the breakfast service time and driving distance, and will be decided locally.

=====

Dealing BS Travel Service Co., Ltd
Japan Tourism Agency Registered Travel Agent (No. 347) Regular member of the Japan Association of Travel

Planning by
Japan Tourism Organization General Incorporated Association
Representative Director Mikihiro Soma
Kyowa-bld 2F , 3-2-7, Shimbashi, Minato-ku, Tokyo, 105-0004, Japan
Inside BS Travel Service Co., Ltd
Mobile 090-4568-1444
E-Mail soma@jtourism.jp Home-Page <http://jtourism.jp/>

=====

Japan bicycle journey with stays

- 2025: <https://jtourism.jp/2020/wp-content/uploads/2025/09/JTOBicycleJourneys2025E.pdf>
2026: <https://jtourism.jp/2020/wp-content/uploads/2025/09/JTOBicycleJourneys2026E.pdf>
2027: <https://jtourism.jp/2020/wp-content/uploads/2025/09/JTOBicycleJourneys2027E.pdf>

One Day Ride Around Tokyo

<https://jtourism.jp/2020/wp-content/uploads/2024/09/JapanOneDayRideAroundTokyo.pdf>