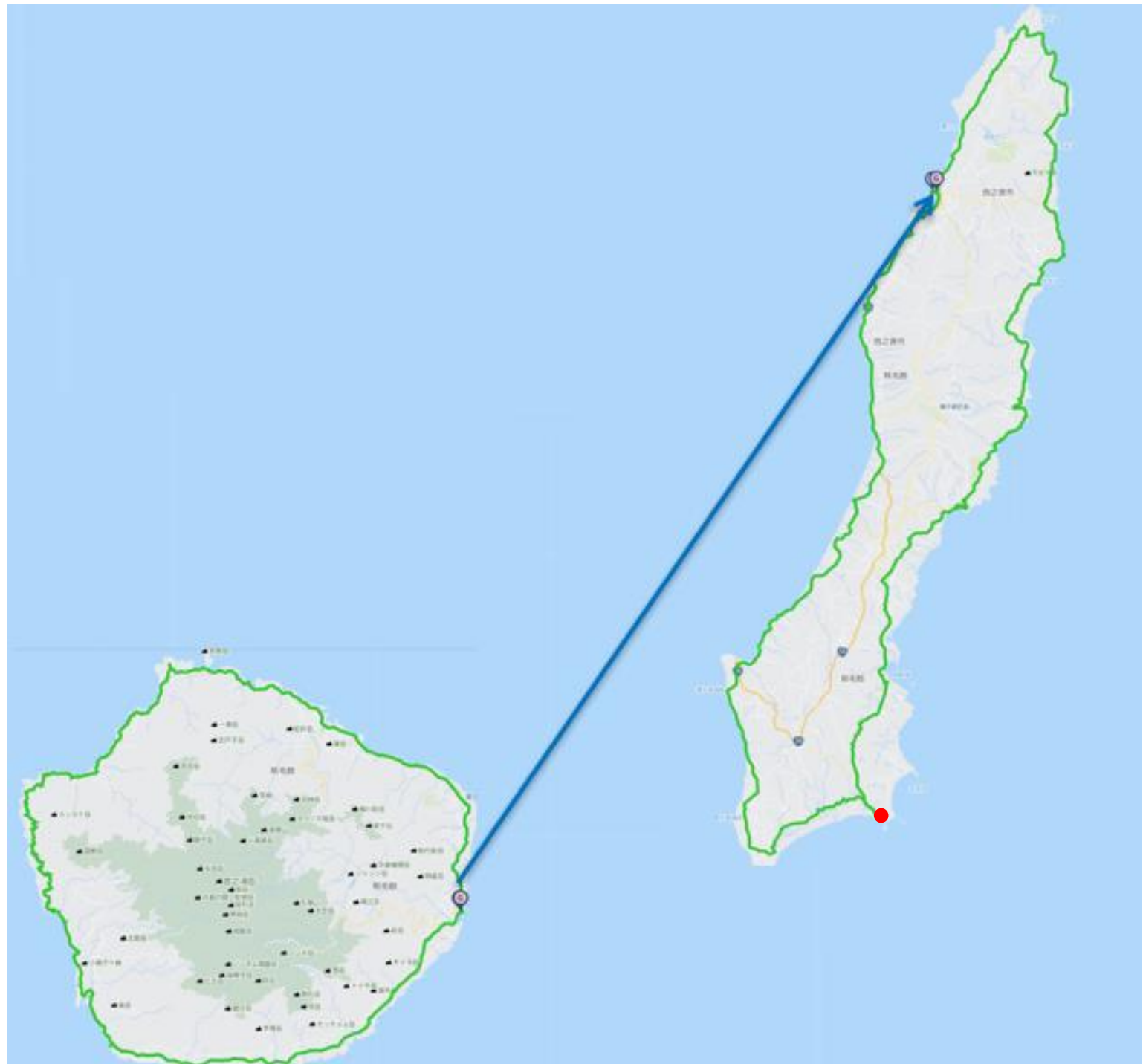


JTO Yakushima Tanegashima Islands Bicycle Journey

Yakushima~Tanegashima islands seaside round ride

2026 February 12th(Thu)~14th(Sat) 3-Stages

Distance:245km Total Gain:4265m



① 12th(Thu) Yakushima island round 96km+1492m

② 13th(Fri) Tanegashima island east 84km+1610m

③ 14th(Sat) Tanegashima island west 65km+1163m

February 12th Yakushima island Sunrise at 7:01 Sunset at 18:02

Ourward return move example

Haneda Tokyo~(Transit flight) Haneda airport(6:25)→Kagoshima(8:20) Kagoshima(8:50)→Yakushima(9:30)

Itami Osaka~(Direct flight) Itami airport(11:25)→Yakushima(13:15)

Fukuoka~(Direct flight) Fukuoka airport(12:55)→Yakushima(14:10)

Kagoshima port→Yakushima Anbo port:Ferry Jet foil moving. Toppo Rocket ferry jet foil 7:30 Kagoshima→10:20Yakushima Anbo
5 ships each day. Airplane apt to close than ship moving by bad weather.

※From Yakushima airport to Anbo port Hotel Auberge , please move by self riding , local bus taxi. 9km bus for 18min

・Wishing for bicycle carrying post, please use bicycle courier and arrive at the previous day. Please use Cyclo Express day fix

※Destination・Pre stay Hotel Auberge 〒891-4311 Kagoshima pref Kumake-gun Yakushimacho Anbo410-165 0997-46-2344

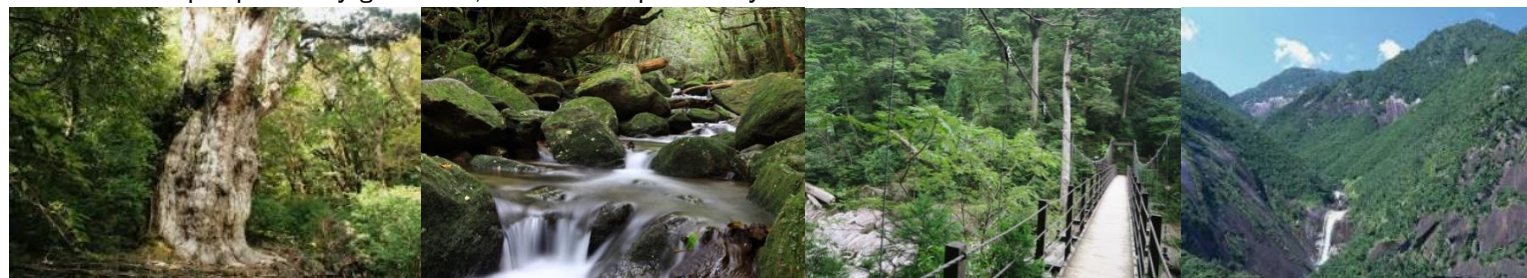
・The staff have pre stay at Hotel Auberge Yakushima and receive the bicycle courier at local.

・Before start , set up bicycle at Hotel Auberge by yourself and start. 300m from Anbo port.



Pre Post stay sightseeing Jomon cedar Shiratani cloud water canyon Yakusugi land Chihiro fall

If wish for the pre post stay guidance , let us know previously.



Yakushima island Yakusugi cedar nature house Yakushima world heritage center Yakushima village history folk museum
Yokomine Jomon ruin



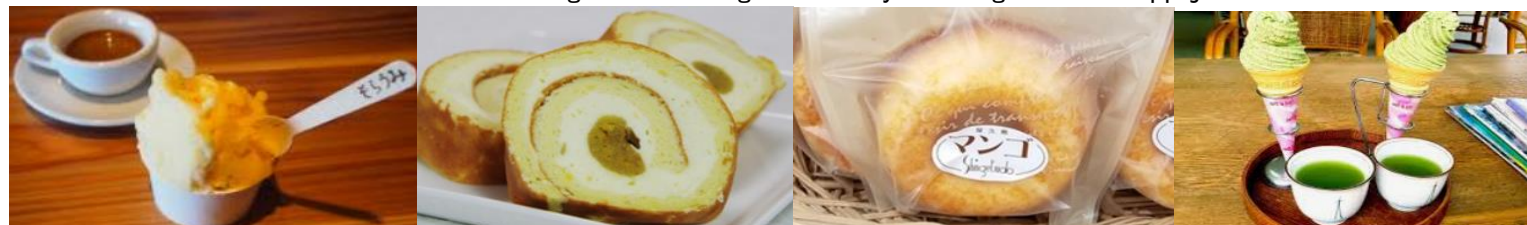
Pre stay meal recommend Anbo port Rengaya meat grill Sanpotei dining Yashima Yakudon



Kamogawa restaurant Sao Paolo Katagirisan Smily



Yakushima rest sweets Soraumi Yakushima gelato Bongado Hiromiya Shingetsudo Happoju tea house



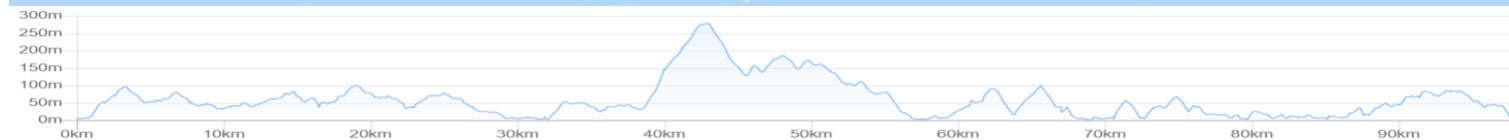
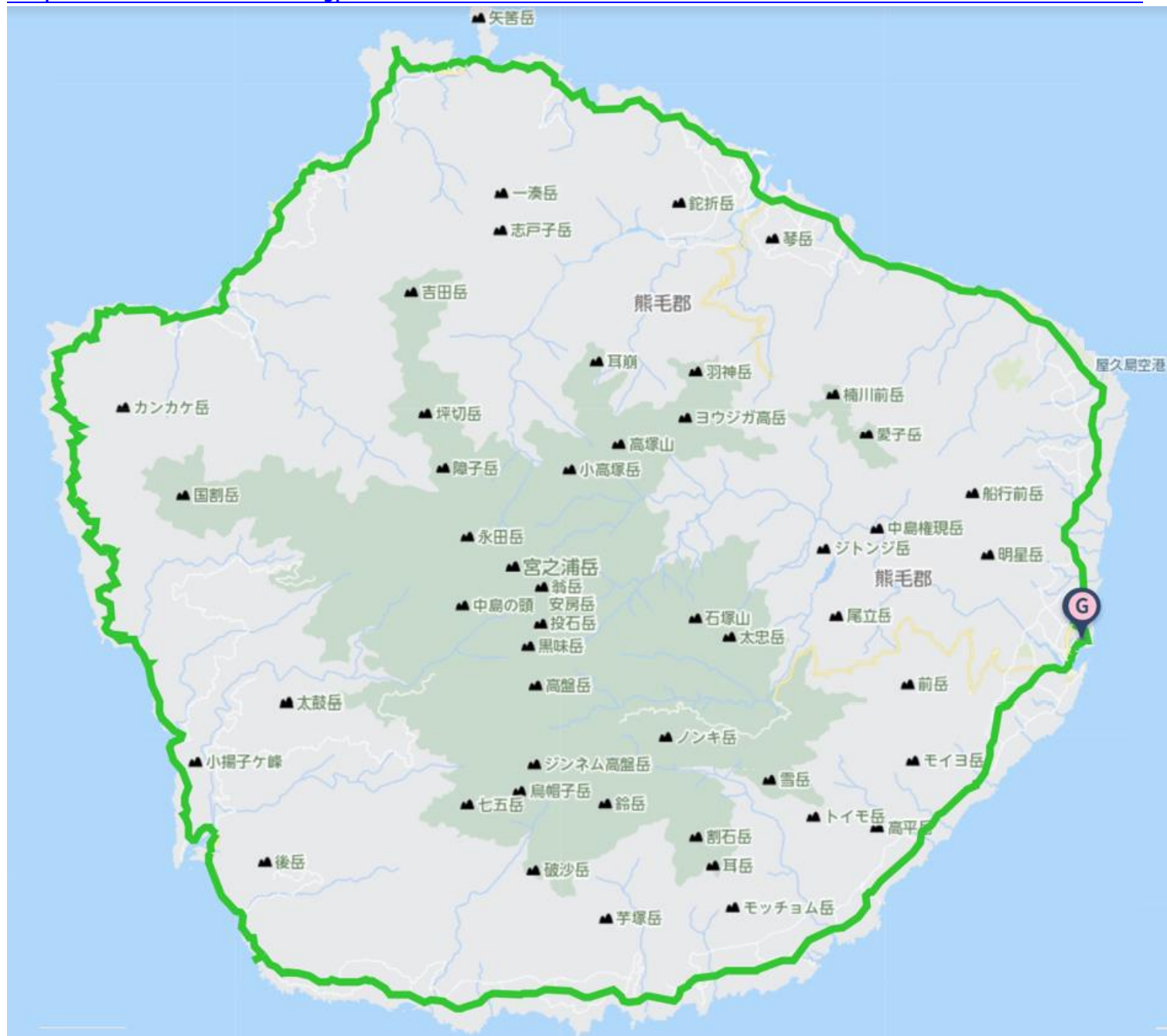
1st Meet February 12th(Thu)AM7:30 Yakushima Hotel Auberge

〒891-4311 Kagoshima pref Kumake-gun Yakushimacho Anbo410-165 0997-46-2344

Luggage which do not need while riding , put on in the Hotel Auberge and start riding.

Yakushima island round 96km+1492m

<https://www.navitime.co.jp/coursebuilder/course/efd5aceebdbd491aa94146db70ed4ebb>



Meal buy(Pre day~Early morning) Shiiba:8:00~19:00 Shopping center Banchan・A Coap Anbo:9~20 Tanakaya:9~19
No dining at west coast of Yakushima , recommend buying meals at Shiiba or others to eat Nagatahama Shiba Tofu (57km)



Public move Yakushima Kotsu bus Anbo~Okawa fall(9:21→10:22 31km) Nagatahama(57km Last17:51)~Miyaura~Yakushima airport
~Anbo 5buses each day

Lunch Kurio port(31km) Tsuwanohana Shochiku Yakushima fruit garden Nagatahama(57km) Shiba tofu(Light meal carry in OK)



Miyaura(80km) Shiosai Naminohana Restaurant&CaffeYakushima Tree Kaedean Gajumaru kitchen



Sightseeing Nakama Gajumaru Okawa fall Yakushima lighthouse Yahazudake mt.

Yakusugi land(Elevation1015m)•Kawakami cedar(Elevation1345m) , for attack ride , recommend lunch at Miyaura area



Stay:Hotel Auberge Yakushimacho Anbo410-165 0997-46-2344 Possible early morning breakfast start lunch box



Outside dinner Kamogawa restaurant Rengaya meat grill Katagirisan Sirius island taste kitchen



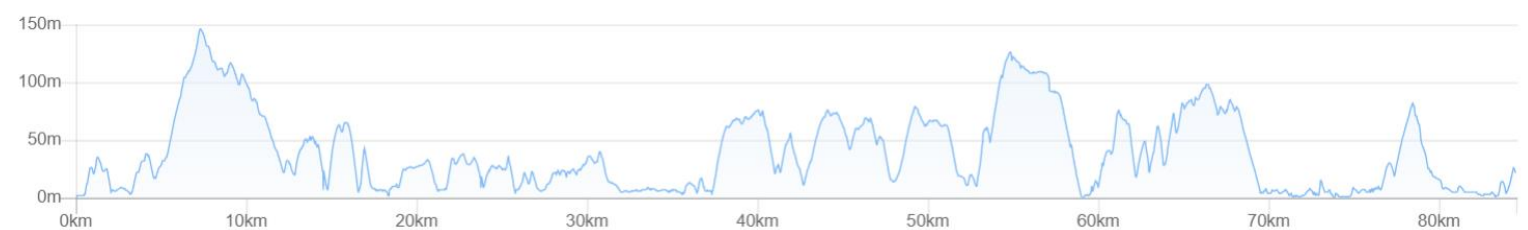
Yashima Yaedake Sanpotei Awaho (It may impossible to serve dinner in the hotel by the local situation)

Spa bath Yakushima green hotel visit (1.3km from Hotel Auberge 1.4km from Anbo port)Impossible bicycle carry in



2nd Tanegashima island east coast 84km+1610m

<https://www.navitime.co.jp/coursebuilder/course/29dd8fc37ade43ef984d3495134aeffd>



Yakushima→Tanegashima: Ferry ship move Toppo Rocket (Yakushima Anbo port 7:00→Tanegashima Nishinoomote port 7:50)



※Support car , rent car pick up and back at Tanegashima Nishinoomote port

Lunch LUANA(41km) Tanegashima airport Daidai tree(50km+5km)



Nakatanecho(63km) Yachiyo sushi Steppin lion Hanayahagi Nozomi noodle



Sightseeing Kishigasaki lighthouse Otokobuchi・Onnabuchi fall Thouthand seat rock cave Tanegashima island universe center



Tanegashima sweets rest Sakaiya Ohisama shinee coffee Café Nanho Tonmy market



Stay Tanegashima Iwasaki hotel cosmo resort 〒891-3703 Minamitanegashimacho Kukinaga3367 0997-26-6888



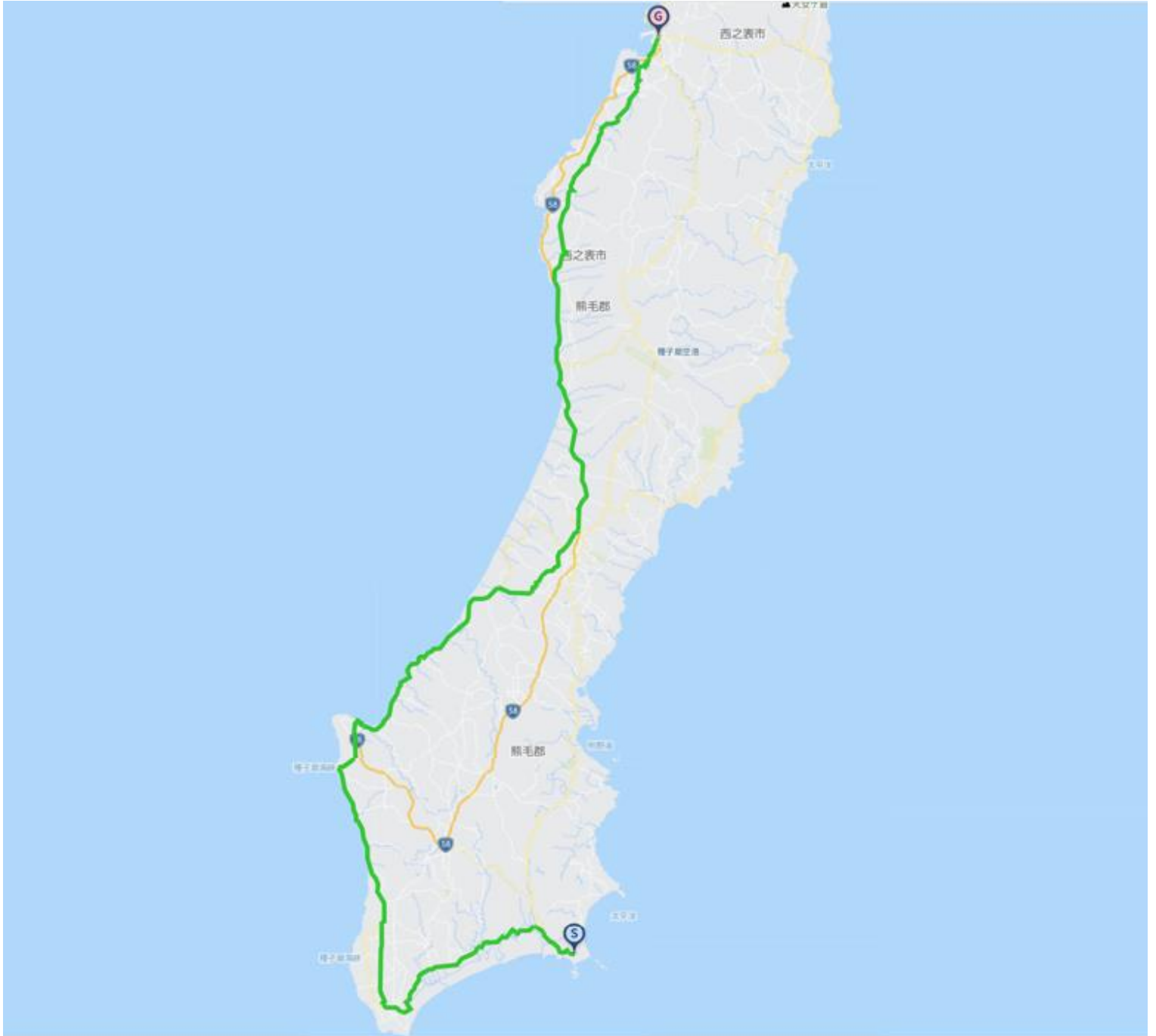
Other stay Sunny spot Minshuku Shimasaki Tnegashima rodge selfish Resort inn Takesaki
 Onsen spa bath Kawachi onsen center(6km+81m north west from Iwasaki hotel)



Public move Tanegashima Nishinoomote port→Minami Tanegashima city hall Sum marin sightseeing bus 5-buses each day

3rd Tanegashima island west coast 65km+1163m

<https://www.navitime.co.jp/coursebuilder/course/7d30f479120c43de9867b0b8d51cc3df>



Public move Minami Tanegashima city hall→Tanegashima Nishinoomote port Sum marin sightseeing bus 5-buses each day

Lunch Nishinoomote port(65km) Komugiya flour Kazaaguruma windmill Imoto Totenko



Nishinoomote port Uosho Ichijo Heihachi Marumi Seoul Kitchen



※IN case going back to home after ride on the finish day , we arrange time to arrive Nishinoomote port before lunch and surely possible to take on airplane or ship cruise.

We decide the time to get to Nishinoomote port on the briefing previous.

After ride if you stay in Nishinoomote port , in case of using the last airplane , we imagine to have lunch at Nakashushicho(40km)

Sightseeing Monument Commemorating the Introduction of Firearms to Japan Homan jinja shrine

Seven colors observation deck Sun set line Tanegashima



Bath spa Akaogi no yu(Inside Tanegashima Araki hotel)



Post stay Luggage receive bicycle sending Tanegashima Araki hotel



※If you want to send bicycle to your home , please send by cyclo express from Tanegashima Araki hotel Akaogi no yu.

Move to home example

Nishinoomote port～Tanegashima airport 18km+43m ※Possible to ride and carry to Tanegashima airport by support car.

Airport limousine bus :Nishinoomote portTanegashima airport 15:35→16:05

Tanegashima airport18:00→Kagoshima airport18:35・19:20→Haneda airport20:55

Tanegashima airport18:00→Kagoshima airport18:35・19:10→Itami airport20:30

Nishinoomote port→Kagoshima port(Toppy & Rocket): 16:40→18:30

※Kagoshima airport arrival departure airplane often stop flying , we recommend the airplane in the early time and ship cruising from Nishinoomote port.

The upper airplane is the final airplane of a day , we recommend to move the earlier airplane up to the ride finish time.



Post stay dinner breakfast Tanegashima Araki hotel



Post stay sightseeing Hirota ruin museum Nakashushicho history folk museum Gun museum Moon window house



Ride Join Fee(Per day Per person) 19,000JPY(Include Tax)

Max Possible Join 1 Orders Minimum Number of riders;5-Riders (Full days ride join)

Included ride join fee : Travel attendant , Support car accompanying Support food supply(fixed limited)

※NOT INCLUDE Moving fee between your home to the starting point , food , stay , support food more than the limited , public move fee , sightseeing fee are all not included at all.

※Joining on the way , Leaving midway , traveling with one's bicycle using public transportation , you should pay the ride join fee per day for each you made application.

When you apply , we make estimation for ride join fee with including not included costs for ride join fee.

Contact E-Mail Address : soma@jtourism.jp

Please apply with the information as below.

※In case of less than minimum number of riders join , make another estimation and conduct the tour.

※Possible to apply from one person to number of group riders , make estimation.

※Possible to make another plan on order made for another day , longer or shorter distance of course.

※We make estimation as the number of riders , days you ride , ride fee , stay , food , public moving , sightseeing , attendant move·stay , for total costs

※Itinerary changes are possible for individual and group applications. We will create the order custom made project and estimate.

For the order custom made project , let you enjoy for fully , we will create a plan for each group.

※In case of terrible weather , body condition , seem impossible to finish riding on the day , move to the mid place or stay by using public move and support car.

Up to the formal application as below , let you show the personal information.

▪The day you ride ▪Your name ▪Sex ▪date , month , year of birth , age ▪Adress ▪Handy phone number ▪E-Mail address

▪Stay and food wishes

※We select and reserve the stay and foods. Personal arrangements are not possible by each riders.

※Please give the wishes for shared room for men or women , single , twin , foods.

※Please stay in the stays at the organizer' s designated stays.

In some case , we cannot meet your request and change the stays on designated.

▪Please let me know the pre and post ride sightseeing wishes , settings.

▪Possible to contact on the ride day (handy phone)&emergency contact (handy phone possible to contact to the substitute person ※Other than the person riders yourself)

▪Experience of your biggest riding , distance(km), Elevation gained(m)

implementation(Western calendar) season(month, spring summer fall winter)

area(country , prefectures, course name)

If we judge that you do not have enough experience to participate in this project, we may decline your participation.

Rental bicycle

Possible to prepare rental road-bicycle , cross-bicycle

If you wish to have rental bicycle , please apply in advance. Request together for Tokyo cycling tour and rental cycle , the partnership ship company.

① Height(cm)②weight(kg) ③bicycle model you wish ④Helmet ⑤grab ⑥pedal (binding or flat) ⑦Bicycle receiving place

Please let me know them when apply. Sometime , it may not turn out as you wish. Prepare wears and shoes by yourself.

I estimate rental price up to the information

Implementation notification;After recruitment deadline to some days before the starting , number of riders , weather forecast , judge the implementation and contact directly to the riders.

Refund ; In case of impossible to hold the phan , we pay back Amount excluding expenses such as fees from ride participation fee.

If the participant is unable to participate due to circumstances , paid ride participation fees will not be returned.

If it becomes impossible to run due to weather or local situation judgment after the start , paid ride participation fees will not be returned.

▪Take ride onto the tour recommended courses with group rides and solo freerides

▪There is no competition for time. Riders work together to reach the goal. Awards will not be given based on ranking

▪There will be no traffic control around the venue. Please follow the local traffic rules.

▪Group rides/recommended course rides are the basics. Please notify in advance for your wish on solo free rides.

▪It is also possible to switch to local wheeled transportation instead of riding due to physical condition etc.

▪The support car transports unnecessary luggage while riding a bicycle , supply support food , follow finishing.

▪The support car moves at the behind of the last rider, basically.

▪If you ride out of the recommended course , we do not change the stay point.

▪There is no support rider leading or tailgating.

▪Those who can join that possible to reach their destination on their own using a smartphone, navigation system, or location search device , or possible on a group ride those who can accompany other members with cooperation.

▪If there is a significant delay from the moving of other riders in the group , we will give you instructions on how to move your bicycle to the stopover point, accommodation on the day, and the goal.

▪The organizer will present recommended courses in advance , but the support car will not be providing detailed guidance to riders while moving alongside them along the way.

▪Bicycles, helmets, puncture kits, bike bags, clothing, cold weather gear changes, etc , please prepare what you need and bring it with you by yourself.

- Please wear brightly colored clothing such as red, yellow, and white. Never wear dark colors such as black or navy blue. We will lend you a red jacket if necessary.
- You are responsible for your own bicycle maintenance and repairs. Please prepare your own spare tubes, maintenance tools, etc.
- standing air pumps and tool boxes will be carried in the support car.
- Please carry a lightweight soft bicycle bag. Carry it with you while riding, so you can move around while riding.
- Depending on where we are staying, bicycle bags may also be used to store your bicycle inside the hotel. Please be sure to carry bicycle bag.
- If you wish to store your bicycle in the accommodation, please help us store it in a bicycle bag when you enter the stay and bring it into the building.
- Hard and semi-soft large cases compatible with airplane rides cannot be transported on the road by the support car.
- If you are joining with a large wheeled device with a hard case or semi-soft case that is compatible with airplane wheeling, after refilling the soft bicycle bag, check-in at the departure/arrival airport and advance transportation to the planned goal point are required.
- Please purchase your own travel insurance and bicycle insurance. Please purchase bicycle insurance with a personal liability amount of 200 million yen or more.
- Please bring your insurance card with you when participating. We check your carry-on the insurance before departure.
- In terms of event, in case injury and illness occur, the participants have no objection to receiving first aid. The organizers will not be held responsible for the method, process, etc.
- The participants in addition to the participants, relatives, heirs, executors, trustees, etc. will not make any claims for damages, etc regardless of the cause, the organizers will be exempt from responsibility in case of accidents, losses, injuries, illnesses, etc. during the event (including aftereffects)
- We eat lunch around noon at the same near restaurant in the same area as possible, depending on the progress of the tour group.
- Lunch, dinner, breakfast, and bathing fees are not included in the ride join fee.
- Support food is also dependent on paid donations from past participants. When you use it, please donate to volunteers or goods.
- Toll road usage fees, sightseeing fees, and travel expenses are not included in the ride participation fee.
- Routes and expenses occurred for group transportation will be decided on-site after discussion, taking into account terrain, weather and progress.
- Transportation costs from your home to the meeting/dissolution location and use of public transportation midway are not included.
- To maintain your health and maintain hygiene, please take a bath, shower, and change of clothes before using public transportation after your ride before going back to your home.
- To avoid inclement weather or traveling in the dark after sunset, we may ask you to turn back, take a shortcut, or take a bicycle onto train move from a station along the way.
- Participants are responsible for safety, course management, bicycle maintenance, cold/heat resistant clothing, measures to prevent bicycle stolen, etc.
- If we decide that you cannot participate safely at your own risk, if you are causing a significant nuisance to other participants, or if you are unable to follow the instructions of the staff, you will be asked to leave the venue even midway through.
- Please note that the participation fee will not be refunded under any circumstances.
- Sightseeing recommendations: If you arrive early and have time, please go sightseeing on your own.
- If you have a request for sightseeing in advance, we will take time in advance and provide support, such as temporarily taking over your bicycle.
- If you consult with us in advance, we will be able to arrange and provide on-site guidance regarding recommended tours for the day before and after ride.

Accommodation, dinner and breakfast

- This is a ride tour in which the organizer decides in advance which lodgings to stay at and travels from one inn to another to sightseeing spots and famous places.
- Accommodation fees are not included in the ride participation fee. It will be included in the cost estimate as a necessary expense at the time of application.
- Recommended accommodation, dinner and breakfast will be arranged by the organizer. Subject to change.
- As much as possible, we prepare at lodging locations bicycle storage in or near the hotel, a large hot spring bath,

yukata, dinner and breakfast, a sleeping room, and a power source.

- We eat dinner and breakfast generally as a group at stay , but , if you wish to eat food outside the stay, please contact us in advance.
- If you have dinner, breakfast, or bathing buying outside the building, we will not provide transportation by support car and not accompany. Please move on your own by walking or using public transportation.
- Each day, luggage will be loaded into the support car and the start will be from the meeting point at designated accommodation. Please come to the meeting point by the departure time
- The meeting departure time is basically 7:30 am every morning, but it changes depending on the breakfast service time and driving distance, and will be decided locally.

=====

Dealing BS Travel Service Co., Ltd
Japan Tourism Agency Registered Travel Agent (No. 347) Regular member of the Japan Association of Travel

Planning by
Japan Tourism Organization General Incorporated Association
Representative Director Mikihiro Soma
Kyowa-bld 2F , 3-2-7, Shimbashi, Minato-ku, Tokyo, 105-0004, Japan
Inside BS Travel Service Co., Ltd
Mobile 090-4568-1444
E-Mail soma@jtourism.jp Home-Page <http://jtourism.jp/>

=====

Japan bicycle journey with stays

- 2025: <https://jtourism.jp/2020/wp-content/uploads/2025/09/JTOBicycleJourneys2025E.pdf>
2026: <https://jtourism.jp/2020/wp-content/uploads/2025/09/JTOBicycleJourneys2026E.pdf>
2027: <https://jtourism.jp/2020/wp-content/uploads/2025/09/JTOBicycleJourneys2027E.pdf>

One Day Ride Around Tokyo

<https://jtourism.jp/2020/wp-content/uploads/2024/09/JapanOneDayRideAroundTokyo.pdf>