



# 2026 Summer Nikko Nasu round 3rides

- ① 4th(Fri) Nikko→Kotoku spa 89km+2444m
- ② 5th(Sat) Kotoku spa→Nasu Shiobara spa 99km+1717m
- ③ 6th(Sun) Shiobara spa→Nikko 71km+1865m

3rd(Thu)6th(Sun) Pre Post stay recommend Nikko station hotel II  
 〒321-1406 Tochigi pref Nikko city Matsubaracho17-4 0288-53-2002

(Breakfast free from 7:00~)



Sightseeing recommend Nikko Toshogu temple Rinkoji temple Old Nikko Tabosawa house Nikko botanical garden



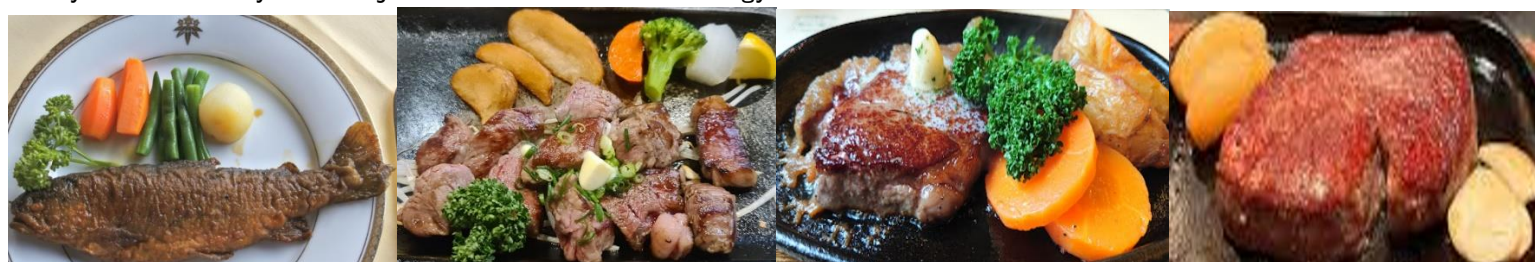
Nikko owl forrest Tezuka Tokuo stone carving museum Nikko city historical museum•Ninomiya Sontoku memorial hall  
 SL showroom Nikko nature museum



Pre post stay meal Around Nikko station TrattoriaGigli kamaya café deyurevuaberu Ko sushi Ramen Bonten



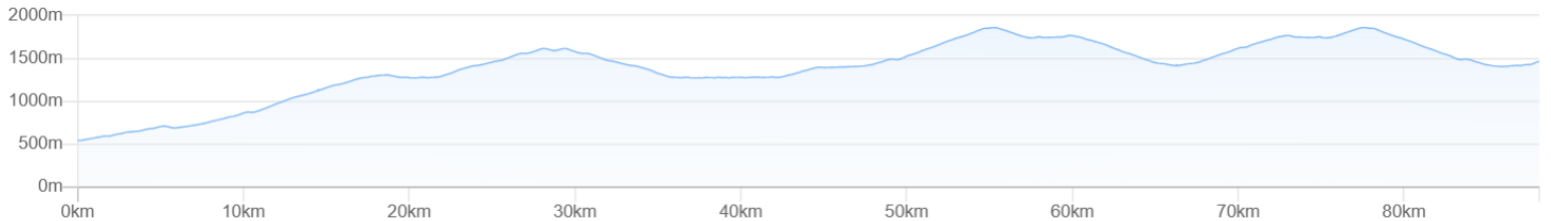
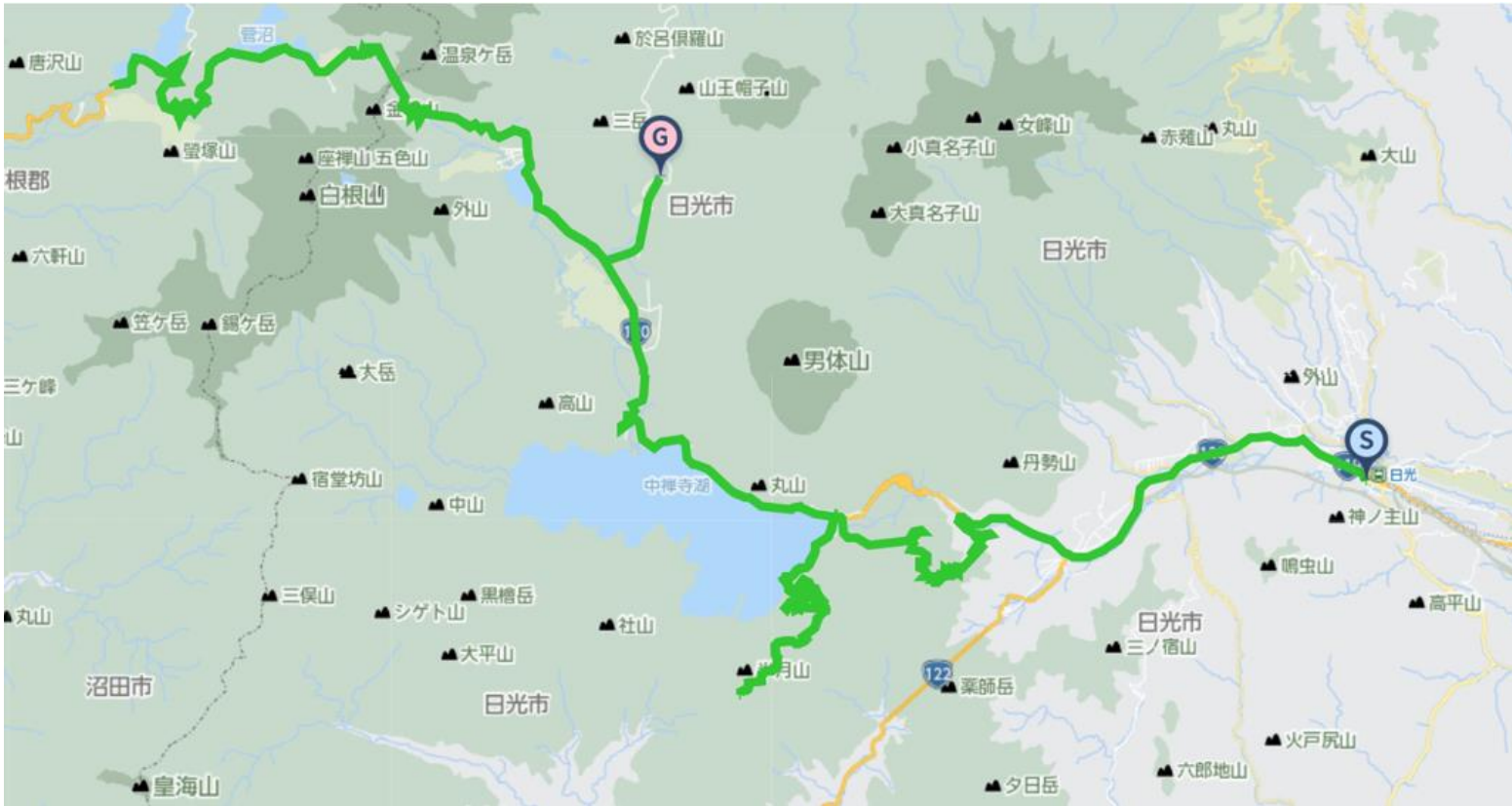
Kanaya hotel Enya Meiji hall Nikko Gourmands Wagyu



1st day September 5th(Fri) Gather at 8:40(Start briefing•Bicycle check)Start from 9:00~  
 Meet at: Nikko station hotel II  
 •Before starting we have briefing forcouse , meal stay. Please come after finishing breakfast.  
 The day move recommend train: Tobu express liberty Kegan 1<sup>st</sup> for Tobu Nikko Asakusa6:30→Tobu Nikko 8:25

# 1st Day September 4th(Fri) Nikko→Kotoku Onsen spa 89km+2444m

<https://www.navitime.co.jp/coursebuilder/course/58a75506de554310b9ded2b2b8871bfe>



Lunch Chuzenjiko lake(36km) Okamoto/Lake Okajin Hand made taste Taro Nantai Kirihana dining



Maple Chez Hoshino Lakes Nikko Dining room Mizunara



Sightseeing The second Irohazaka slope Akechidaira rope way Akechidaira observation deck Kegonnotaki fall



Hangetsu Mt. Chuzenjiko view observation deck(From Hangetsuyama bus station , walk about 30 minutes on mountain road)  
 Tachiki Kannon Utagahama •Chuzenjiko pleasure boat Italia embassy villa memorial hall



Ryuzunotaki fall Senjogahara field Kinsei pass(Tochigi pref road highest point) Suganuma swamp



Nippon romantic road Marunuma swamp Marunuma plateau ski resort Kotoku farm



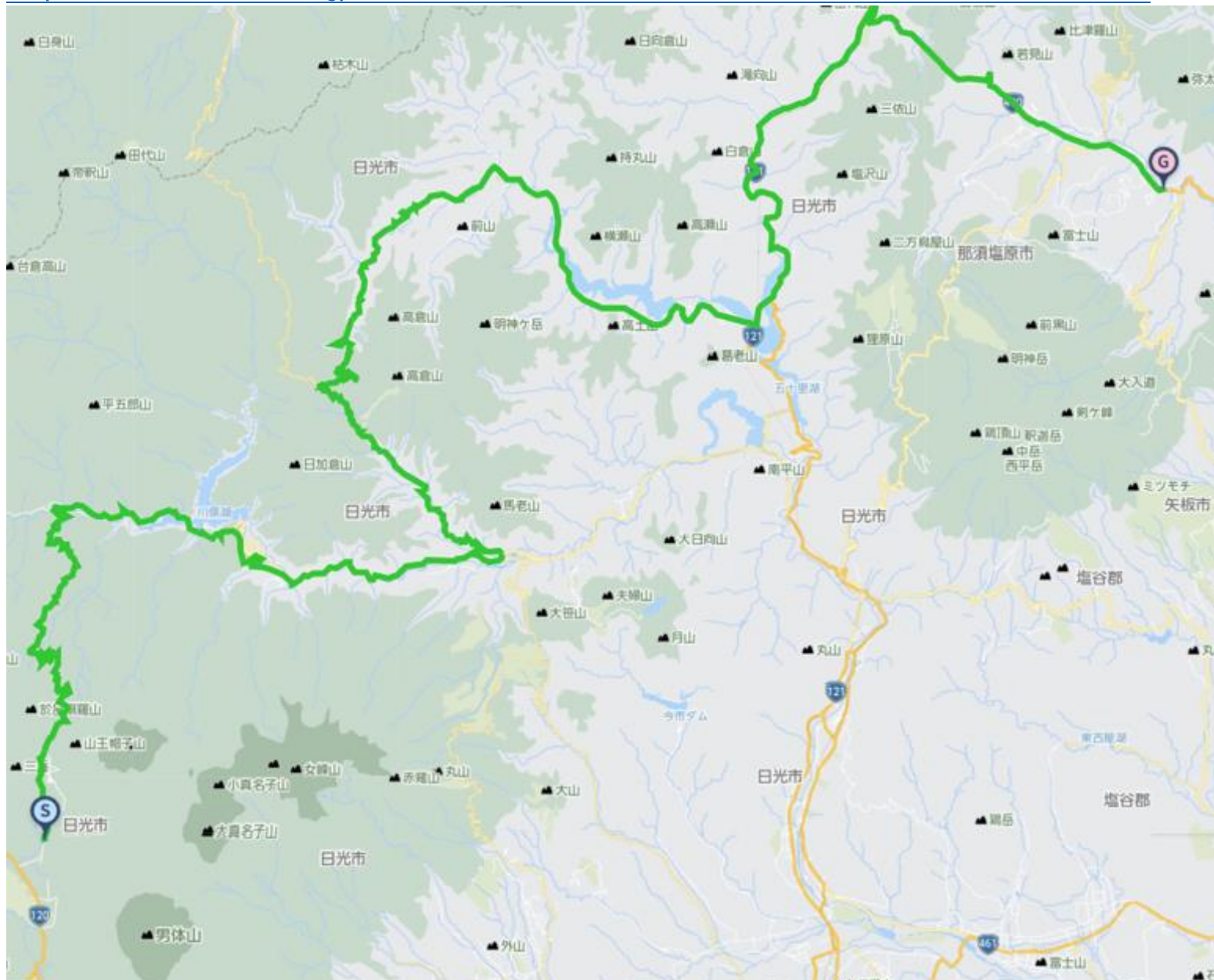
Stay Kotoku onsen spa Nikko Astoria hotel 〒321-1661 Tochigi pref Nikko city Kotoku Onsen 0288-55-0585



Other stay recommends Okunikko Kogen hotel Okunikko Yumoto Kamenoi hotel Okunikko Konishi hotel  
 Okunikko Yunomori Kyukamura Nikko Yumoto Kankosou  
 Public Bicycle carry moving recommend Tobu bus Nikko local bus

2nd Day 5th(Sat) Kotoku onse spa→Shiobara onsen spa 99km+1717m

<https://www.navitime.co.jp/coursebuilder/course/4a28bb171b584a5ea6f5bf577200b493>



Lunch Nikko Kuriyama onsen(38km) Yamaaji soba noodle Kitanomichi Kuriyama home products center Kuriyama fishing Otaki soba



Yu Nishikawa spa(61km) Yamaga Heike soba noodle Shioya Yamadori dining Grill meat Yamaji



Sightseeing Okukinu forrestv road Kawamata onsen spa village Kawamata lake Kurobe dam lake



Yu Nishikawa onsen spa village Heikenosato field·Heike fallen person Folklore Museum Yu nishikawa lake Michinoeki Yunishika ·Yunoko line



Stay Shiobara Onsen spa village Tokiwa hotel 〒329-2921 Nasushibara city Shiobara 695 TEL: 0287-32-3251



Hotel Oruri 〒329-2921 Nasushibara city Shiobara 815 0287-32-5500



Outside dinner recommends Ebisuya Kyuchan Shiobara yoshoku dining Mikasaken Japanese Mtsumoto Koraku sushi

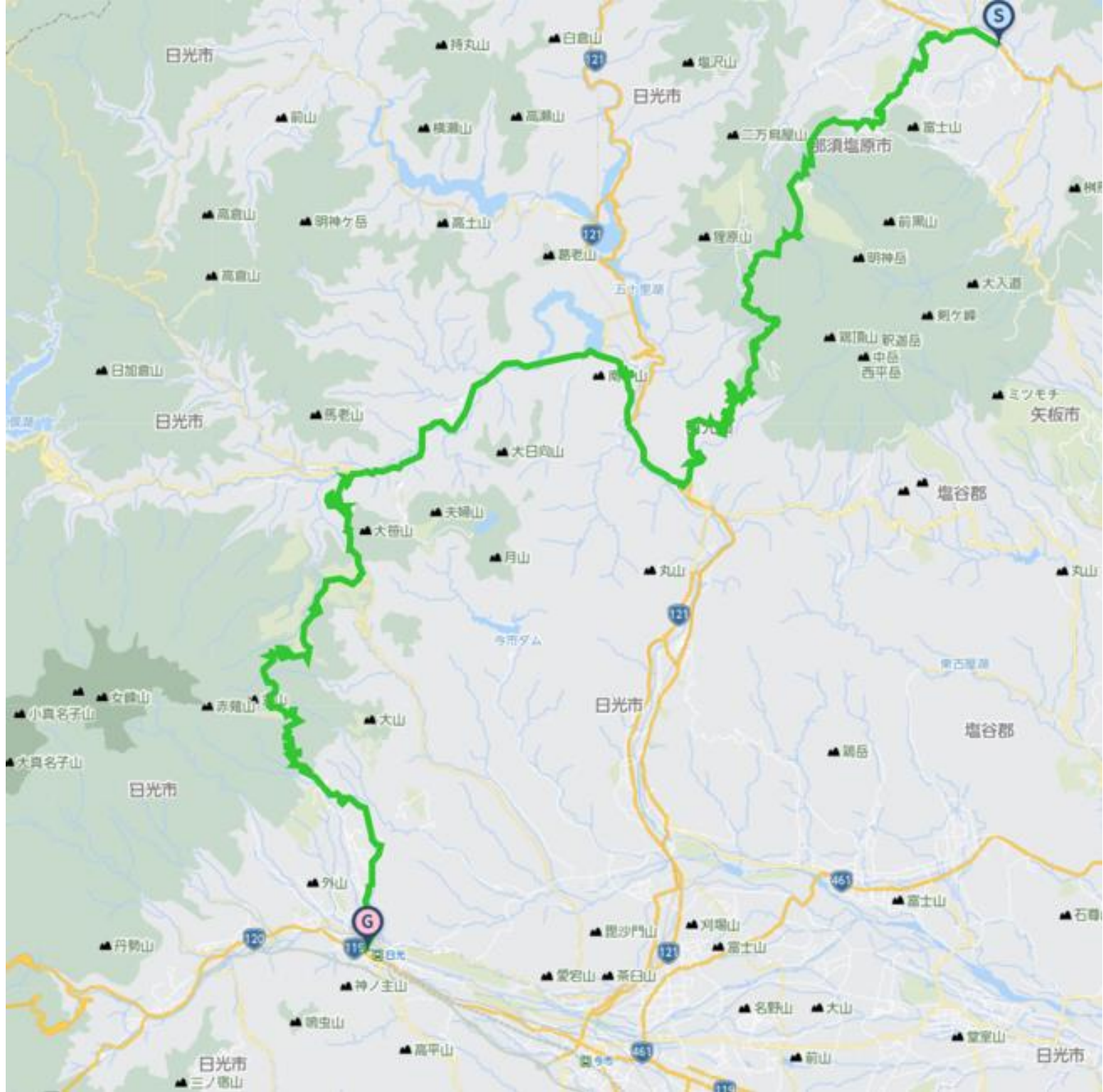


Other stay recommends Majimaso Honjin creative cuisine and pure natural spa

Public Bicycle carry moving recommend Tobu bus Nikko local bus Nikko→Kamiyori Shiobara Onsen  
guchi Tobu Nikko line Tobu Kinugawa line Yagan railway line Aizu Kinugawa line

3rd day 6th(Sun) Shiobara onsen spa→Nikko station 71km+1865m

<https://www.navitime.co.jp/coursebuilder/course/0d7b5b0182004fffa5595c962ba6a30a>



Lunch Ryuokyo station(30km) Ryuo dining Senya fresh vegetable Ryuokyo dining Dikokuan



Kawaji onsen spa(35km) Himawari dining(Inside Kawaji dam museum) Sansui sobannoodle Kurobe dam(45km) Hinatasoba Kitanoji



Kuriyama(46km) Magokoro soba Kuriyama home products center Kitanoji soba Nikko Kiriburi plateau Osasa farm BBQ



Kiriburi plateau rest house(51 km) Yamano restaurant(67km)



Sightseeing Nitishio Momiji line Ryuokyo Kawaji Gojyuri dam observantion deck Kuriyama Nikko line



Kiriburi plateau Kisuge plane footsteps(1445steps, Need 40minutes) Komarudai observation deck Kiriburi fall

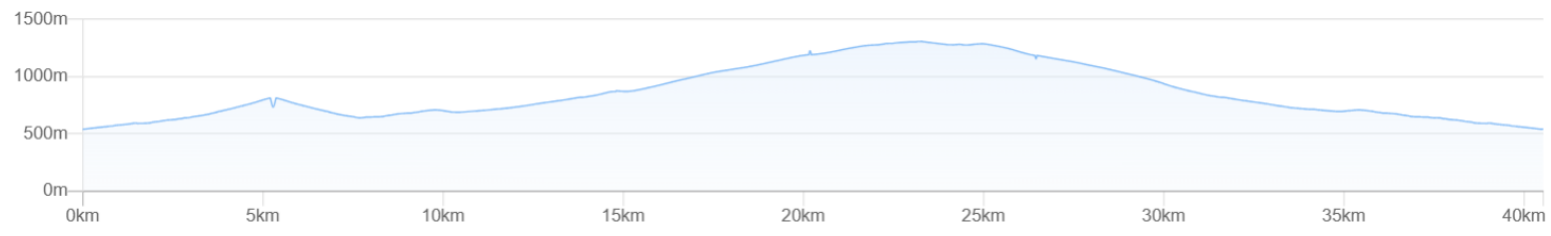


Public Bicycle carry moving recommend Kamiyori Shiobara Onsenguchi→Nikko Tobu Nikko line Tobu Kinugawa line

Time attack Nikko station~Urami fall~Secons Iroha slope up ~Kegon fall sightseeing~First Iroha slope down 40km+1151m  
 It takes 3-hours to finish this time attack. Only possible to attack on starting until 14:00 around Nikko station(70km-point)

<https://www.navitime.co.jp/coursebuilder/course/3c0dab242e694c2ca695f3c73cb7ecff>





Sightseeing recommend Uramitaki fall Kegon valley Hoto fall Hannya fall



Bath recommend Nikko city Onsen spa relaxation center 〒321-1423 Nikko city Nanasato680-1 (10:00~21:00 1.5km from Nikko station)



Nikko station hotel classic(11:00~16:00 Final entrance 15:00 In front of Nikko station)



Buying foods and souvenirs Nikko bussan kyokai Mizuguruma bussan Toko bussan Lion Dor supermarket



**Contact E-Mail Adress : [soma@jtourism.jp](mailto:soma@jtourism.jp)**

✂Itinerary changes are possible for individual and group applications. We will create the order custom made project and estimate.

For the order custom made project , let you enjoy for fully , we will create a plan for each group.

Please apply with the information as below.

✂Possible to apply from one person to number of group riders , make estimation.

✂Possible to make another plan on order made for another day , longer or shorter distance of course.

✂We make estimation as the number of riders , days you ride , ride fee , stay , food , public moving , sightseeing , attendant move·stay , for total costs

✂In case of terrible weather , body condition , seem impossible to finish riding on the

day , move to the mid place or stay by using public move and support car.

Up to the formal application as below , let you show the personal information.

•The day you ride •Your name •Sex •date , month , year of birth , age •Adress •Handy phone number •E-Mail address •Number of join riders

•Stay and food wishes

✂We select and reserve the stay and foods. Personal arrangements are not possible by each riders.

✂Please give the wishes for shared room for men or women , single , twin , foods.

✂Please stay in the stays at the organizer' s designated stays.

In some case , we cannot meet your request and change the stays on designated.

•Please let me know the pre and post ride sightseeing wishes , settings.

•Possible to contact on the ride day (handy phone)&emergency contact (handy phone possible to contact to the substitute person ✂Other than the person riders yourself)

•Experience of your biggest riding , distance(km), Elevation gained(m)

implementation(Western calendar) season(month, spring summer fall winter)

area(country , prefectures, course name)

If we judge that you do not have enough experience to participate in this project, we may decline your participation.

## Rental bicycle

Possible to prepare rental road-bicycle , cross-bicycle

If you wish to have rental bicycle , please apply in advance. Request together for Tokyo cycling tour and rental cycle , the partnership ship company.

① Height(cm)②weight(kg) ③bicycle model you wish ④Helmet ⑤grab ⑥pedal (binding or flat) ⑦Bicycle receiving place

Please let me know them when apply. Sometime , it may not turn out as you wish. Prepare wears and shoes by yourself.

I estimate rental price up to the information

Implementation notification;After recruitment deadline to some days before the starting , number of riders , weather forecast , judge the implementation and contact directly to the riders.

Refund ; In case of impossible to hold the phan , we pay back Amount excluding expenses such as fees from ride participation fee.

If the participant is unable to participate due to circumstances , paid ride participation fees will not be returned.

If it becomes impossible to run due to weather or local situation judgment after the start , paid ride participation fees will not be returned.

## Ride Join Fee(Per day Per person) 15,000JPY(Include Tax)

Max Possible Join 1 Oriders ~ Minimum Number of riders;5-Riders (Full days ride join)

✂In case specified number of participants join by general application.

Included ride join fee : Travel attendant , Support car accompanying Support food supply(fixed limited)

✂NOT INCLUDE Moving fee between your home to the starting point , food , stay , support food more than the limited , public move fee , sightseeing fee are all not included at all.

✂Joining on the way , Leaving midway , traveling with one's bicycle using public transportation , you should pay the ride join fee per day for each you made application.

When you apply , we make estimation for ride join fee with including not included costs for ride join fee.

•Take ride onto the tour recommended courses with group rides and solo freerides

•There is no competition for time. Riders work together to reach the goal. Awards will not be given based on ranking

•There will be no traffic control around the venue. Please follow the local traffic rules.

- Group rides/recommended course rides are the basics. Please notify in advance for your wish on solo free rides.
- It is also possible to switch to local wheeled transportation instead of riding due to physical condition weather etc.
- The support car transports unnecessary luggage while riding a bicycle , supply support food , follow finishing.
- The support car moves at the behind of the last rider, basically.
- If you ride out of the recommended course , we do not change the stay point.
- There is no support rider leading or tailgating.
- Those who can join that possible to reach their destination on their own using a smartphone, navigation system, or location search device , or possible on a group ride those who can accompany other members with cooperation.
- If there is a significant delay from the moving of other riders in the group , we will give you instructions on how to move your bicycle to the stopover point, accommodation on the day, and the goal.
- The organizer will present recommended courses in advance , but the support car will not be providing detailed guidance to riders while moving alongside them along the way.
- Bicycles, helmets, puncture kits, bike bags, clothing, cold weather gear changes, etc , please prepare what you need and bring it with you by yourself.
- Please wear brightly colored clothing such as red, yellow, and white. Never wear dark colors such as black or navy blue. We will lend you a red jacket if necessary.
- You are responsible for your own bicycle maintenance and repairs. Please prepare your own spare tubes, maintenance tools, etc.
- Standing air pumps and tool boxes will be carried in the support car.
- Please carry a lightweight soft bicycle bag. Carry it with you while riding, so you can move around while riding.
- Depending on where we are staying, bicycle bags may also be used to store your bicycle inside the hotel. Please be sure to carry bicycle bag.
- If you wish to store your bicycle in the accommodation , please help us store it in a bicycle bag when you enter the stay and bring it into the building.
- Hard and semi-soft large cases compatible with airplane rides cannot be transported on the road by the support car.
- If you are joining with a large wheeled device with a hard case or semi-soft case that is compatible with airplane wheeling, after refilling the soft bicycle bag , check-in at the departure/arrival airport and advance transportation to the planned goal point are required.
- Please purchase your own travel insurance and bicycle insurance. Please purchase bicycle insurance with a personal liability amount of 200 million yen or more.
- Please bring your insurance card with you when participating. We check your carry-on the insurance before departure.
- In terms of event , in case injury and illness occur , the participates have no objection to receiving first aid. The organizers will not be held responsible for the method, process, etc.
- The participates in addition to the participants, relatives, heirs, executors, trustees, etc. will not make any claims for damages, etc regardless of the cause, the organizers will be exempt from responsibility in case of accidents, losses, injuries, illnesses, etc. during the event (including aftereffects)
- We eat lunch around noon at the same near restaurant in the same area as possible, depending on the progress of the tour group.
- Recommendations regarding meals, accommodation, sightseeing, and bicycle transport may change from what is stated.
- Lunch, dinner, breakfast, and bathing fees are not included in the ride join fee.
- Support food is also dependent on paid donations from past participants. When you use it, please donate to volunteers or goods.
- Toll road usage fees, sightseeing fees, and travel expenses are not included in the ride participation fee.
- Routes and expenses occurred for group transportation will be decided on-site after discussion, taking into account terrain, weather and progress.
- Transportation costs from your home to the meeting/dissolution location and use of public transportation midway are not included.
- To maintain your health and maintain hygiene , please take a bath, shower, and change of clothes before using public transportation after your ride before going back to your home.
- To avoid inclement weather or traveling in the dark after sunset, we may ask you to turn back, take a shortcut, or take a bicycle onto train move from a station along the way.
- Participants are responsible for safety, course management, bicycle maintenance, cold/heat resistant clothing, measures to prevent bicycle stolen , etc.
- If we decide that you cannot participate safely at your own risk, if you are causing a significant nuisance to other participants, or if you are unable to follow the instructions of the staff, you will be asked to leave the venue even

midway through.

- Please note that the participation fee will not be refunded under any circumstances.
- Sightseeing recommendations: If you arrive early and have time, please go sightseeing on your own.
- If you have a request for sightseeing in advance, we will take time in advance and provide support, such as temporarily taking over your bicycle.
- If you consult with us in advance, we will be able to arrange and provide on-site guidance regarding recommended tours for the day before and after ride.

Accommodation, dinner and breakfast

- This is a ride tour in which the organizer decides in advance which lodgings to stay at and travels from one inn to another to sightseeing spots and famous places.
- Accommodation fees are not included in the ride participation fee. It will be included in the cost estimate as a necessary expense at the time of application.
- Recommended accommodation, dinner and breakfast will be arranged by the organizer. Subject to change.
- As much as possible , we prepare at lodging locations bicycle storage in or near the hotel, a large hot spring bath, yukata, dinner and breakfast, a sleeping room, and a power source.
- We eat dinner and breakfast generally as a group at stay , but , if you wish to eat food outside the stay, please contact us in advance.
- If you have dinner, breakfast, or bathing buying outside the building, we will not provide transportation by support car and not accompany. Please move on your own by walking or using public transportation.
- Each day, luggage will be loaded into the support car and the start will be from the meeting point at designated accommodation. Please come to the meeting point by the departure time
- The meeting departure time is basically 7:30 am every morning, but it changes depending on the breakfast service time and driving distance, and will be decided locally.

=====

Dealing BS Travel Service Co., Ltd  
Japan Tourism Agency Registered Travel Agent (No. 347) Regular member of the Japan Association of Travel

Planning by  
Japan Tourism Organization General Incorporated Association  
Representative Director Mikihiro Soma  
Kyowa-bld 2F , 3-2-7, Shimbashi, Minato-ku, Tokyo, 105-0004, Japan  
Inside BS Travel Service Co., Ltd  
Mobile 090-4568-1444  
E-Mail [soma@jtourism.jp](mailto:soma@jtourism.jp) Home-Page <http://jtourism.jp/>

=====

Japan bicycle journey with stays

- 2025: <https://jtourism.jp/2020/wp-content/uploads/2025/09/JTOBicycleJourneys2025E.pdf>
  - 2026: <https://jtourism.jp/2020/wp-content/uploads/2025/09/JTOBicycleJourneys2026E.pdf>
  - 2027: <https://jtourism.jp/2020/wp-content/uploads/2025/09/JTOBicycleJourneys2027E.pdf>
- One Day Ride Around Tokyo  
<https://jtourism.jp/2020/wp-content/uploads/2024/09/JapanOneDayRideAroundTokyo.pdf>