

Karusuto observation deck



Sasayama castle ruin



November 30th(Mon) Pre stay Shin Shimonoseki

Business Hotel Hayashi 〒751-0872 Yamaguchi pref Shimonoseki city Akine Minamimachi1-8-13 tel:083-256-3888



Dinner・Breakfast Dining Hayashi(Inside Business Hotel Hayashi Breakfast6:30~) Ikkyu dining5:00~ Ajiichi7:00~



Pre stay sightseeing Fire mt park・Rope way Dannoura strait Strait dream tower Battle field park cherry blossoms



Japan China Peace memorial hall Shimonoseki city historical museum Shimonoseki city art museum Akama shrine



Outside dinner recommend Chanko citew Ajito Bistro HANA Ramen noodle Jiro EEYO



Outside Bath recommend「Natural Spa Warakunoyo Shimonoseki Seiryu」 Shimonoseki city Shinmukuno 1-2-15
 TEL:083-229-4126 3km from Shin Shimonoseki station. Near Sanden bus「Shinmukuno bus stop」1bus each hour

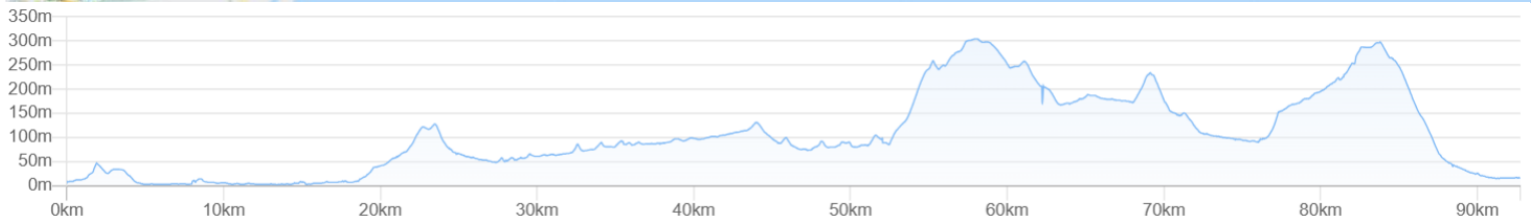
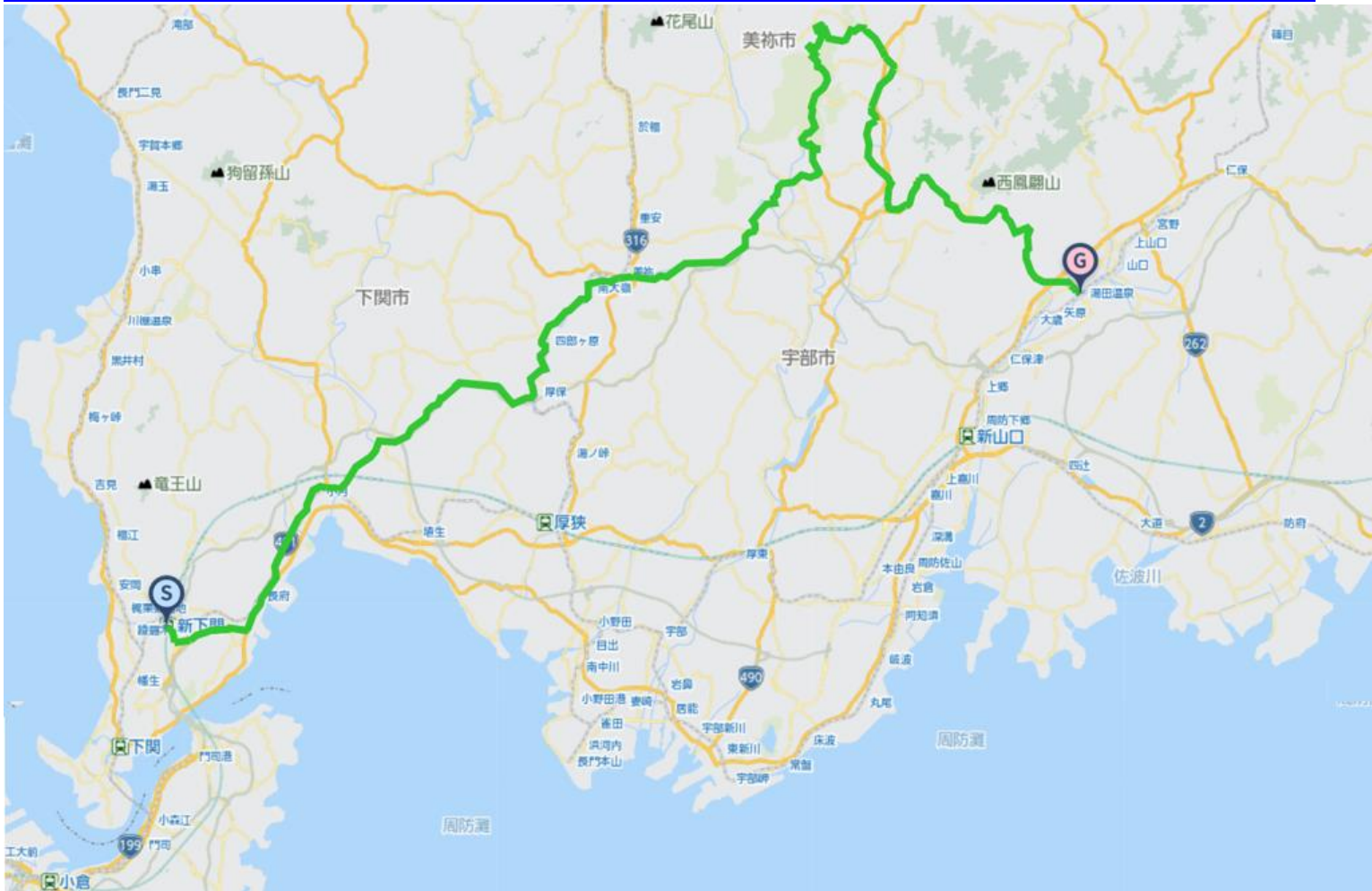


1st day December 1st(Tue) Meet at 8:00 Business hotel Hayashi

Before start , we have briefing for course , meal , accommodations. Please gather after breakfast and bicycle preparing.

① 1st(Tue) Shimonoseki—Akiyoshidai—Yamaguchi 92km + 1097m

<https://www.navitime.co.jp/coursebuilder/course/16f0b4b6bb5145b8b823627b017bef3c>



Lunch Miya(37km) Shohachi Saesonyary dining Gen Fukuraiken Petit lab Bakery



Akiyoshido cave(50km) Yasutomiya sightseeing hall restaurant Daikanbo Gokanten Shinkokan r's cafe Akiyoshi



Kamigo station Takase Tile soba noodle Ryuan dining Nagomiya Makobei Okonomiyaki pancake Nemu



Sightseeing Akiyoshido cave Karusuto observation deck Akiyoshidai plane Taishodo cave



Kagekiyodo cave Nagato copper mine ruins Restoration century memorial park Nakahara Chuya memorial hall



Stay Yuda onsen spa Nishino Miyabi Tokiwa 〒753-0056 Yamaguchi city Yudaonsen4-6-4 TEL: 083-922-0091



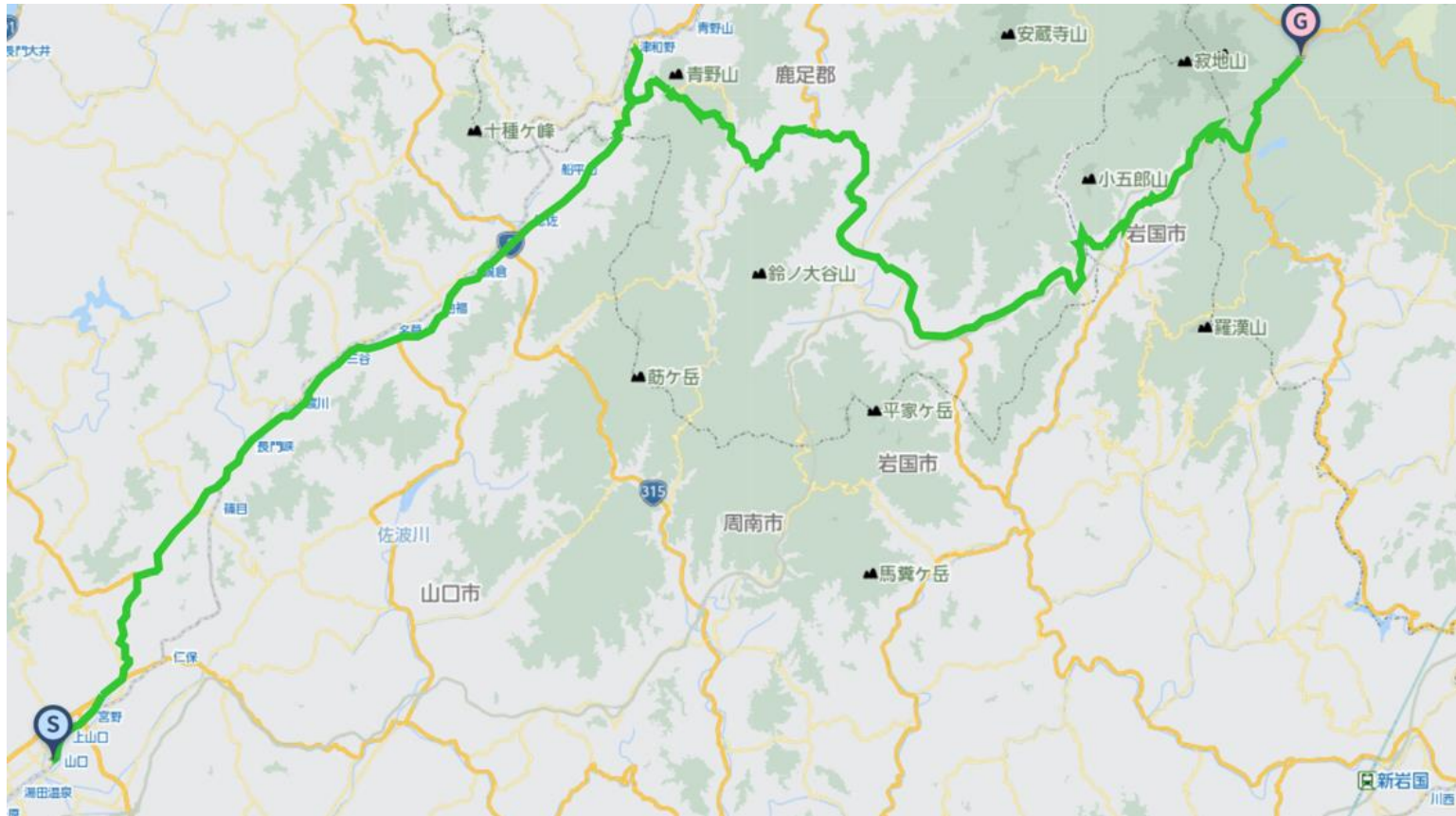
Other stay Oyado Onn Yudaonsen spa Hotel Route inn Yamaguchi Yuda onsen spa Super hotel Yamaguchi Yuda onsen spa
 Outside dinner recommend Choshuya Yuda Sakana fish standard Shigemasa Isokura Italian Kitchen VANSAN



Public move Shin Shimonoseki station→Yuda Onsen station JR Sanyo honsen line JR Yamaguchi line

② 2nd(Wed) Yamaguchi—Tsuwano—Shiobara onsen spa 113km + 1899m

<https://www.navitime.co.jp/coursebuilder/course/fc650efe1dc743fea09503a899607be8>



Lunch Tsuwano(46km) Mimatsu dining Minoya Inakamon Artigiano



Kakinoki onsen spa(65km)
Cook making dining Akiyama Michinoeki Goyanya Kakinokimura village Kakinosato Kakinoki spa Hatonoyu



Sightseeing St. Francis Xavier Memorial Church Yamaguchi Daijingu shrine Toshunji temple Rurikoji temple



Joeiji temple garden park Nagato valley Tsuwano・Tsuwano castle ruin Mori Ogai memorial hall



Stay Shiobara onsen spa Matsukawa 〒738-0301 Hiroshima pref Hatsukaichi city Yoshiwa391-3 TEL:0829-77-2224



Other stay recommend Mominokoso

Public move Yamaguchi→Tsuwano JR Yamaguchi line ※No public bus from Tsuwano to Shiobara spa Movwe via Hiroshima
 Free bus Hiroshima kenchi(13:00) ~ Nishi Hiroshima statio Kusatsu(13:10) ~ Itskaichi Rakurakuen(13:25) ~ J R Kushito
 stationHatsukaichi(13:30)~Shiobara spa Matsukawa(14:30) Need Reservation

Hiroden bus JR Miyauchi Kushido station→Saiki culture center(1~2buses each hour) Hatsukaichi city bus
 Yoshiwa Sakura bus Change to Yoshiwa route.[Saiki culture crnter~Shiobata spa 14:00→14:32 16:45→17:17

③ 3rd(Thu) Hatsukaichi—Kameyama—Mitsugi 106km+914m

<https://www.navitime.co.jp/coursebuilder/course/5f28555671d848c3b1feb90b0318121f>



Lunch Aki Kameyama •Kodo Homachigawa st.(54km) Kamenoko house Pareiya dining Engawa noodle café Ichi Jun noodle



Aki Takada Yachiyoo Kamine(66km) Chintonko Yachiyo Hanatei Kamine udon soba noodle Daichan



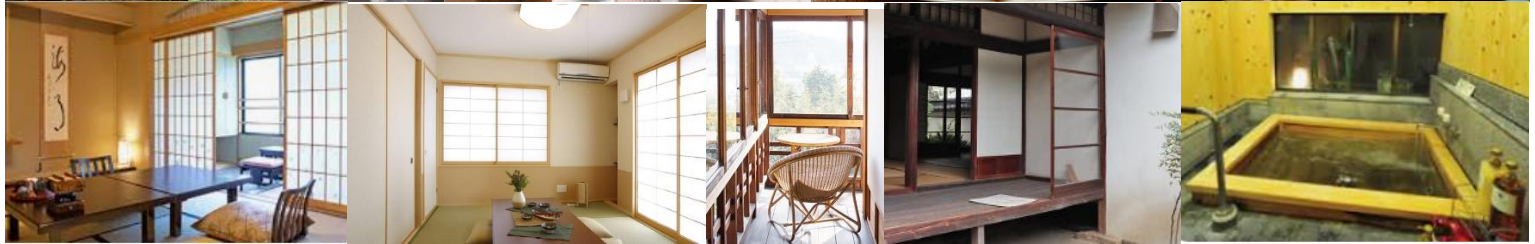
Sightseeing Ini Rice terraces Fukuoji temple Wakunaga Manji memorial park Miyoshi topography hill



Ozeki mt park Tsujimura Jusaburo doll museum Yumoto Goichi Japan monster Mitsugi ghost museum Bird Cormorant fishing



Stay Mitsugi Kakumeikan 〒728-0021 Hiroshima pref Mitsugi city Mitsugicho1857-5 TEL:0824-62-2187



Other stay Hotel route inn Mitsugi Crown hills Mitsugi Nagaoka ryokan Matsumiro ryokan Yamato ryokan

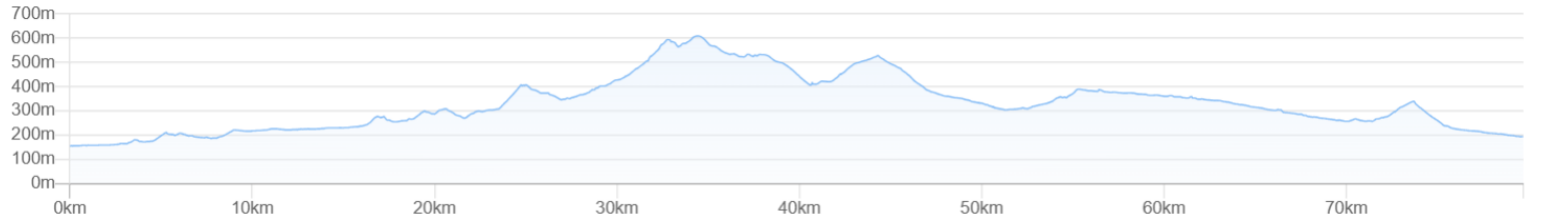
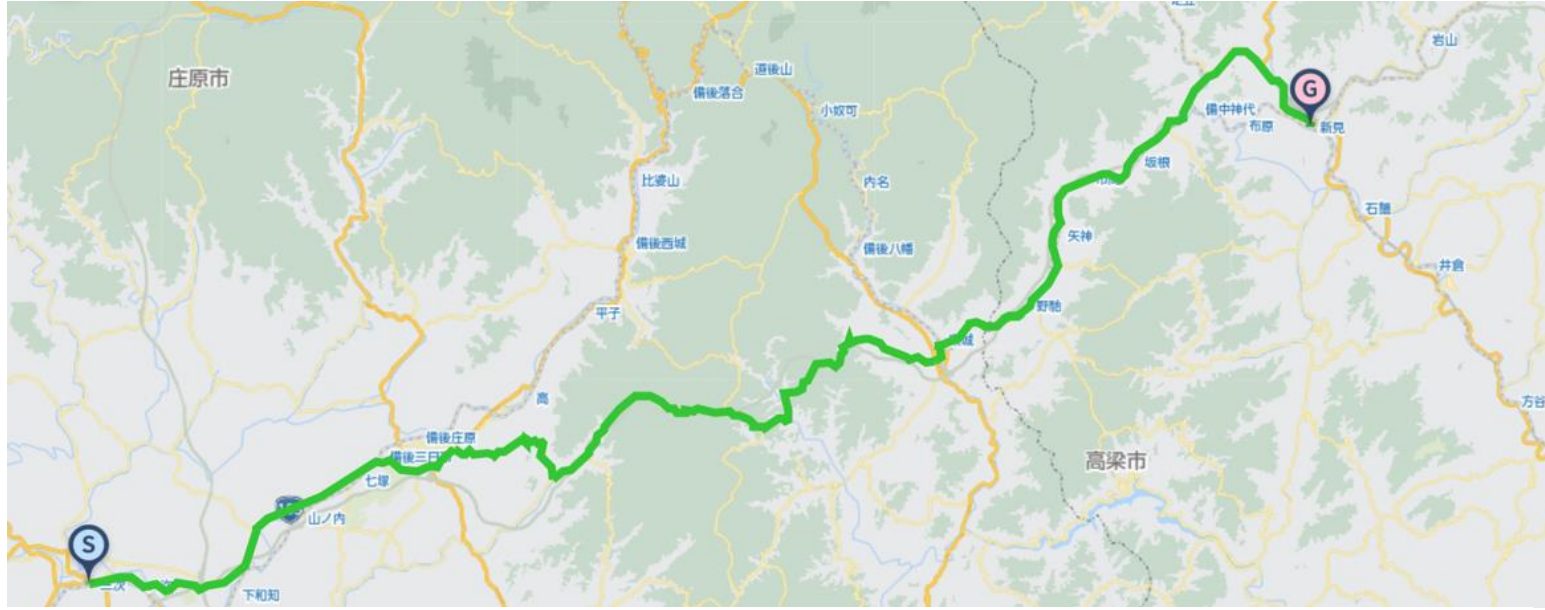
Outside dinner Hibari Kushigen grill chicken Sakai grill meat coal Bariuma ramen noodle pork chicken soy source



Public move Aki Kameyama→Mitsugi JR Kabe line Iki line ✕No bus from Shiobara onsen Matsubara to Aki Kameyama
 Free bus(Not fixed time) Via Hiroshima JR Kabe line Oshiwa Sakura bus Shiobara spa~Saiki culture center 6:48→7:20
 9:23→9:55 Hiroden bus Saiki culture center→JR Miyauchi Kushido station (1~2Buses each hour) Hatsukaichi city bus
 Miyauchi Kushido~Hiroshima~Mitsugi Sasnyo honsen•Bihoku Kotsu•Hiroshima express line

④ 4th(Fri) Mitsugi—Tojo—Niimi 83km + 1224m

<https://www.navitime.co.jp/coursebuilder/course/8d3a2f980e304628b1f0493cd92d8509>



Lunch Bingo Shohara(23km) Sorara cafe (Michinoeki Takano) Hiba sightseeing center Kunigorokun Mondaniya



Tojo(55km) YABUKI TATEGU TEN Furyu Obashi steak house (Michinoeki YOU salon Tojo) Mijukumon soba noodle



Sightseeing Teishakukyo cave Michinoeki YOU salon Tojo Michinoeki Koigakubo Niimi art museum



Stay Niimi Grand hotel Miyoshiya 〒718-0003 Okayama Niimi city Takao2456 TEL:0867-72-1131 ※Bath for sex alternate



Business hotel EIKO Inside restaurant Etranje



Other stay Niimi business city hotel

Outside bath·Sauna recommend Genki Hiroba Niimi(9:30~22:00) 〒718-0005 Niimi city Ageichi15-1 0867-71-2168
2.9km from Niimi Grand hotel Miyoshiya



Outside dinner Ajinosho Hakubi (180m from Niimi Grand hotel Miyoshiya)



Other outside dinner recommend Indeira AI okonomiyaki pancake Shinsaien Yamagane Chinese noodle



Public move Mitsugi→Niimi JR Geibi line

⑤ 5th(Sat) Niimi—Misaku Oiwake—Yugo spa 85km+941m

<https://www.navitime.co.jp/coursebuilder/course/2ca23916f1a048e6b1a3fd2ec1b14a3a>



Lunch Kuse(41km) Kiraku Maniwa Aguri Garden Ajihei handmade udon noodle Nandemon grill meat



Mimasaka Sendai(58km) Hanamarutei Tonpei Misaki okonomiyaki Sakuie seasonary udon noodle(Only Saturday Sunday)



Sightseeing Mankido cave Katsuyama town street conservation area Tsuruyanma park Tsuyama castle Modern toys orgrl dream museum



Stay Yugo onsen spa Taketei 〒707-0062 Okayama pref Mimasaka city Yugo622-1 TEL:0868-72-0090



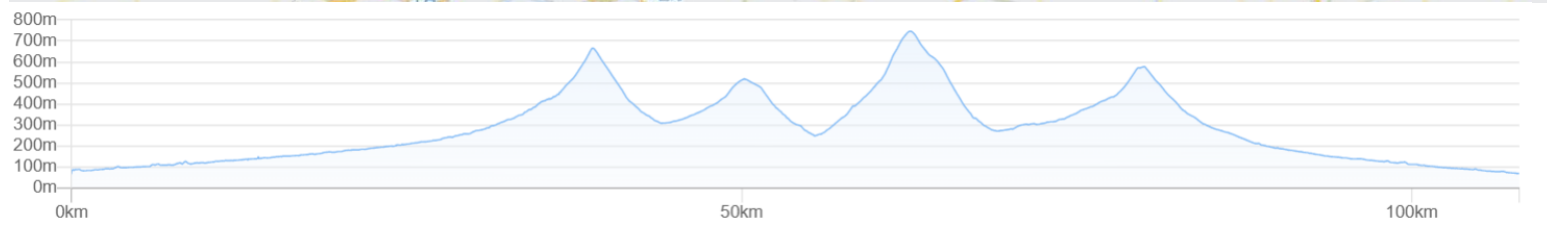
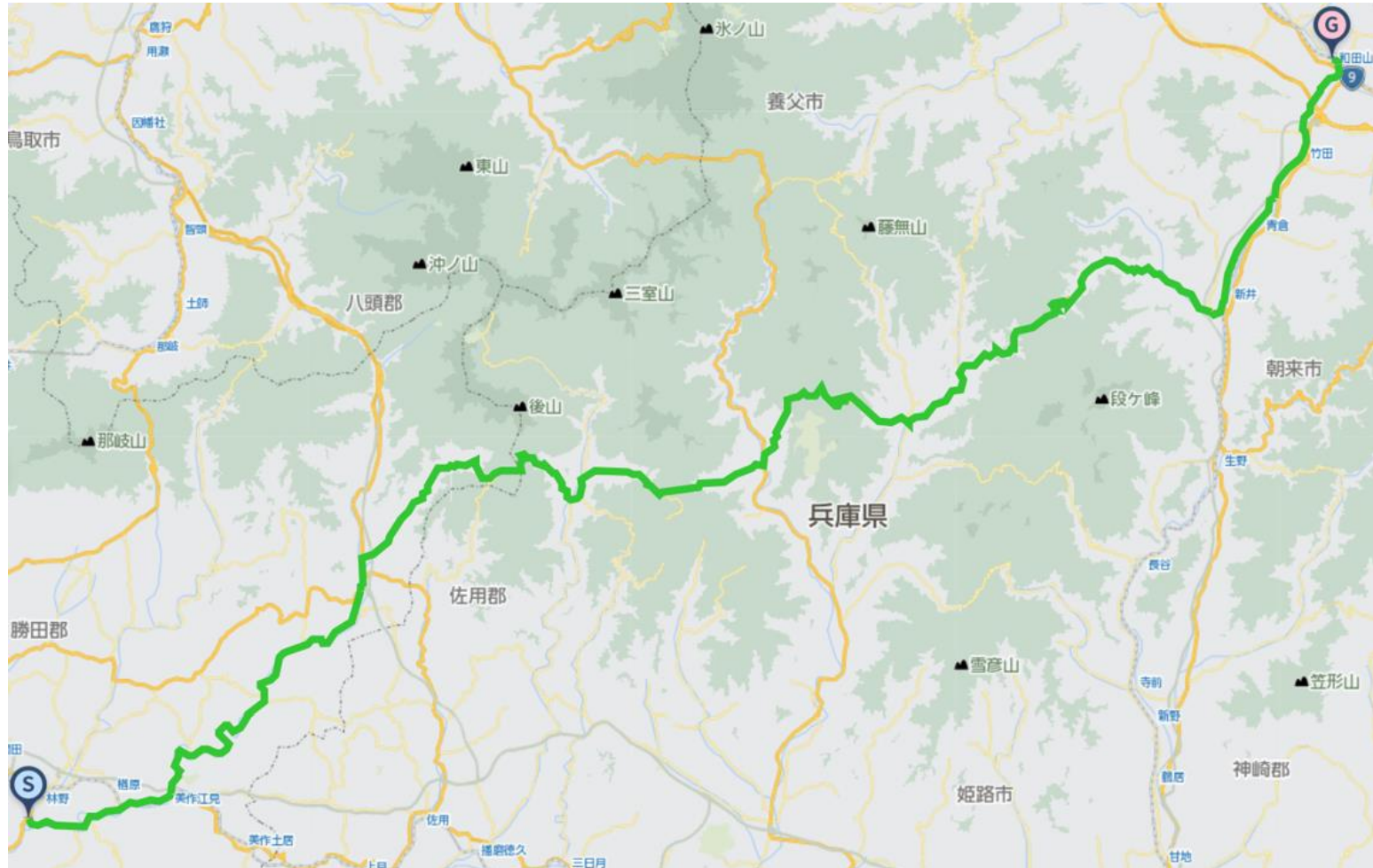
Poppy springs resort & spa Yugo Katsuragi Yugo grand hotel Daikokuya Minshuku
Outside dinner Komasa sushi Furusato Chinchikurin YUNOGO KITAMAN



Public move Niimi→Hayashino JR Shinhime line

⑥ 6th(Sun) Yugo onsen spa—Shiso—Wadayama 108km+1758m

<https://www.navitime.co.jp/coursebuilder/course/47cd9717c58b44e1ae4dc219f090ea75>



Lunch Haga(56km) Michinoeki Minami Haga Star&Moon Yamanami rest house Haga konigiri



Shiso city Ichinomiya(69km) Ichinomiya spa Mahoroba Sasayuri



Sightseeing

Musashi Musashi home • Miyamoto Musashi birth place Iehara ruins park Takeda castle ruin • cloud sea Maruyama river



Stay Wadatyama Yuuhiken 〒669-5201 Hyogo pref Asago city Wadayamacho Wadayama31 TEL:079-672-2059



Hotel area one Wadayama 〒669-5213 Hyogo pref Asago city Wadayamacho Tamaki 767 TEL:079-672-1333

※Bath taking , partnership with Wadayamanoyu spa 350m



Other stay Izumi ryokan Business hotel Tetsuya

Outside bath recommend

Wadayamanoyu 〒669-5213 Hyogo pref Asago city Wadayamacho Tamaki 1087-1 TEL:079-672-1126 1.2km from Yuuhiken



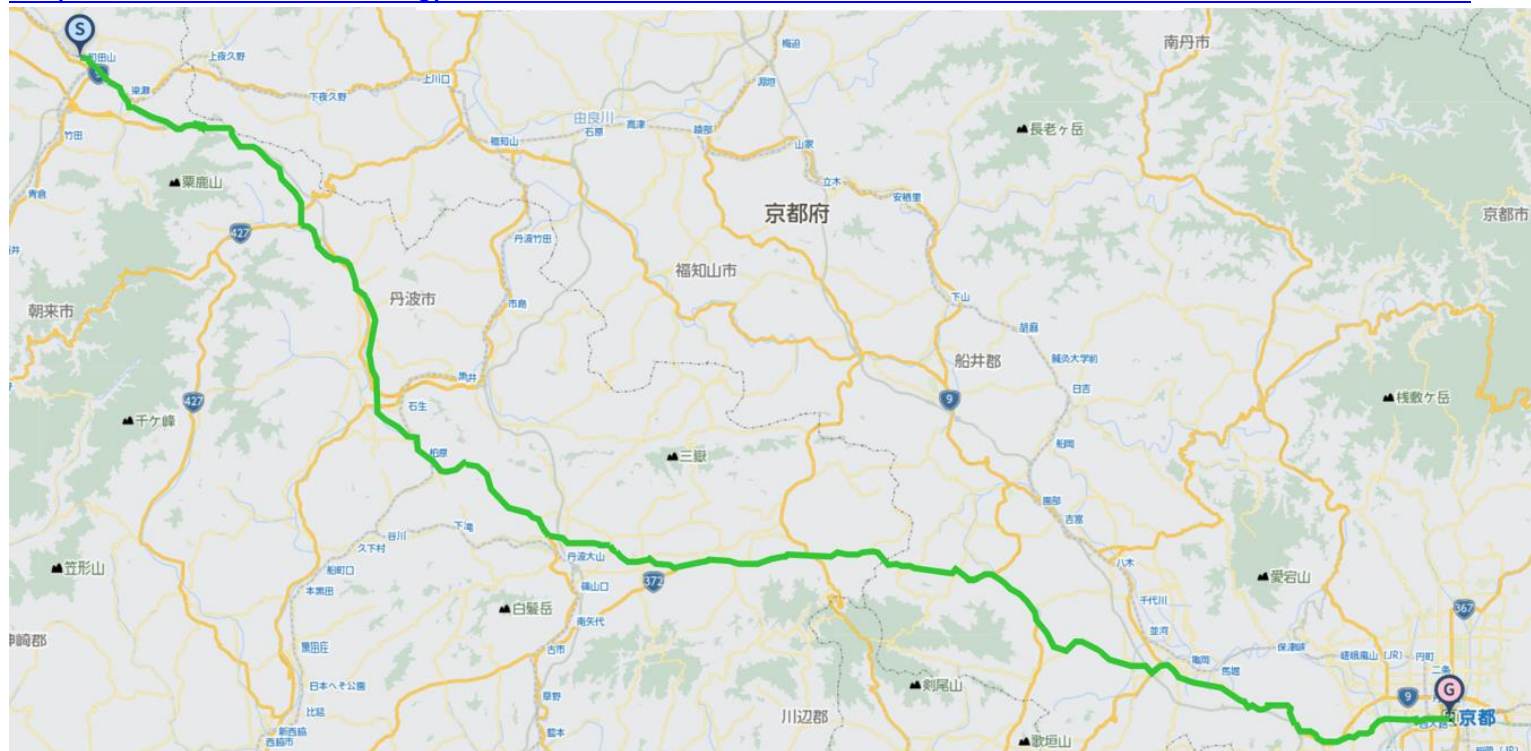
Outside dinner Otaya vine beef grill Muto grill meat Hakkakutei Japanese restaurant Bekkakuya Ramen Wadayama



Public move Hayashino~Wadayama JR Himeshin line JR Bantan line

⑦ 7th(Mon) Wadayama—Sasayama—Kyoto 116km+1036m

<https://www.navitime.co.jp/coursebuilder/course/391a85e92f2c4cbda839371e6d992fa8>



Lunch Sasayama castle ruin(54km)

Kai Tanba Sasayama local cuisine Ikkyuan Tamamizu Sasayama Nyogetsuan boar meat stew



Hiragiya soba noodle Ote Shincho boar meat stew & udon noodle Anzu apricot CASA DEL' AMICI



Yasuda(65km) Fukusumi farmers restaurant Nenohi Fukusumi ramen noodle Trattoria al Ragu Narito pan



Sightseeing Tanba water divide park Sasayama castle ruin Kyoto Sanga stadium·Hozu river cruise port Kyoto station



Post stay recommend

Dormy inn PREMIUM Kyoto station 〒600-8216 Kyoto city Shimokyo ku Higashi Shikojicho 558-8 TEL:075-371-5489



Other stay recommend Apa hotel Kyoto station Horikawadori Fujiya ryokan Azumaya Izumiya ryokan

Public move Wadayama~Kyoto JR Sanin honsen line JR Sagano line

Bath recommend Hinodeyu(Closed on Thursdays 1km from Kyoto station)



Taisho yu(Closed on Tuesdays·Wednesdays 0.5km from Kyoto station)



Meal recommend Hafuu Mishimatei Sanei Sushi Kappo Kamo Kyoto vegetable



Post stay sightseeing Kiyomizutera temple Fushimi Inari Kinkakuji temple Toji temple



Nijijo castle Yasaka jijja shrine Sanjyusangendo Kyoto Imperial Palace





Contact E-Mail Adress : soma@jtourism.jp

✂Itinerary changes are possible for individual and group applications. We will create the order custom made project and estimate.

For the order custom made project , let you enjoy for fully , we will create a plan for each group.

Please apply with the information as below.

✂Possible to apply from one person to number of group riders , make estimation.

✂Possible to make another plan on order made for another day , longer or shorter distance of course.

✂We make estimation as the number of riders , days you ride , ride fee , stay , food , public moving , sightseeing , attendant move·stay , for total costs.

✂You do not need to complete the entire designated distance every day. You can use train transport, support cars, or shortcuts to reach intermediate checkpoints and accommodations, and ride only the parts you want to ride, taking breaks, eating, and sightseeing along the way.

Up to the formal application as below , let you show the personal information.

·The day you ride ·Your name ·Sex ·date , month , year of birth , age ·Adress ·Handy phone number ·E-Mail address ·Number of join riders

·Stay and food wishes

✂We select and reserve the stay and foods. Personal arrangements are not possible by each riders.

✂Please give the wishes for shared room for men or women , single , twin , foods.

✂Please stay in the stays at the organizer' s designated stays.

In some case , we cannot meet your request and change the stays on designated.

·Please let me know the pre and post ride sightseeing wishes , settings.

·Possible to contact on the ride day (handy phone)&emergency contact (handy phone possible to contact to the substitute person ✂Other than the person riders yourself)

·Experience of your biggest riding , distance(km), Elevation gained(m)

implementation(Western calendar) season(month, spring summer fall winter)

area(country , prefectures, course name)

If we judge that you do not have enough experience to participate in this project, we may decline your participation.

Rental bicycle

Possible to prepare rental road-bicycle , cross-bicycle

If you wish to have rental bicycle , please apply in advance. Request together for Tokyo cycling tour and rental cycle , the partnership ship company.

① Height(cm)②weight(kg) ③bicycle model you wish ④Helmet ⑤grab ⑥pedal (binding or flat) ⑦Bicycle receiving place
Please let me know them when apply. Sometime , it may not turn out as you wish. Prepare wears and shoes by yourself.
I estimate rental price up to the information

Implementation notification;After recruitment deadline to some days before the starting , number of riders , weather forecast , judge the implementation and contact directly to the riders.

Refund ; In case of impossible to hold the plan , we pay back Amount excluding expenses such as fees from ride participation fee.

If the participant is unable to participate due to circumstances , paid ride participation fees will not be returned.

If it becomes impossible to run due to weather or local situation judgment after the start , paid ride participation fees will not be returned.

Ride Join Fee(Per day Per person) 17,000JPY(Include Tax)

Max Possible Join 10riders~Minimum Number of riders;5-Riders (Full days ride join)

※Fee(Per day Per person) In case specified number of participants join by general application.

Included ride join fee : Travel attendant , Support car accompanying Support food supply(fixed limited)

※NOT INCLUDE Moving fee between your home to the starting point , food , stay , support food more than the limited , public move fee , sightseeing fee are all not included at all.

※Joining on the way , Leaving midway , traveling with one's bicycle using public transportation , you should pay the ride join fee per day for each you made application.

When you apply , we make estimation for ride join fee with including not included costs for ride join fee.

- Take ride onto the tour recommended courses with group rides and solo freerides
- There is no competition for time. Riders work together to reach the goal. Awards will not be given based on ranking
- There will be no traffic control around the venue. Please follow the local traffic rules.
- Group rides/recommended course rides are the basics. Please notify in advance for your wish on solo free rides.
- It is also possible to switch to local wheeled transportation instead of riding due to physical condition weather etc.
- The support car transports unnecessary luggage while riding a bicycle , supply support food , follow finishing.
- The support car moves at the behind of the last rider, basically.
- If you ride out of the recommended course , we do not change the stay point.
- There is no support rider leading or tailgating.
- Those who can join that possible to reach their destination on their own using a smartphone, navigation system, or location search device , or possible on a group ride those who can accompany other members with cooperation.
- If there is a significant delay from the moving of other riders in the group , we will give you instructions on how to move your bicycle to the stopover point, accommodation on the day, and the goal.
- The organizer will present recommended courses in advance , but the support car will not be providing detailed guidance to riders while moving alongside them along the way.
- Bicycles, helmets, puncture kits, bike bags, clothing, cold weather gear changes, etc , please prepare what you need and bring it with you by yourself.
- Please wear brightly colored clothing such as red, yellow, and white. Never wear dark colors such as black or navy blue.
We will lend you a red jacket if necessary.
- You are responsible for your own bicycle maintenance and repairs. Please prepare your own spare tubes, maintenance tools, etc.
- Standing air pumps and tool boxes will be carried in the support car.
- Please carry a lightweight soft bicycle bag. Carry it with you while riding, so you can move around while riding.
- Depending on where we are staying, bicycle bags may also be used to store your bicycle inside the hotel. Please be sure to carry bicycle bag.
- If you wish to store your bicycle in the accommodation , please help us store it in a bicycle bag when you enter the stay and bring it into the building.
- Hard and semi-soft large cases compatible with airplane rides cannot be transported on the road by the support car.
- If you are joining with a large wheeled device with a hard case or semi-soft case that is compatible with airplane wheeling, after refilling the soft bicycle bag , check-in at the departure/arrival airport and advance transportation to the planned goal point are required.
- Please purchase your own travel insurance and bicycle insurance. Please purchase bicycle insurance with a personal

liability amount of 200 million yen or more.

- Please bring your insurance card with you when participating. We check your carry-on the insurance before departure.
- In terms of event , in case injury and illness occur , the participates have no objection to receiving first aid. The organizers will not be held responsible for the method, process, etc.
- The participates in addition to the participants, relatives, heirs, executors, trustees, etc. will not make any claims for damages, etc regardless of the cause, the organizers will be exempt from responsibility in case of accidents, losses, injuries, illnesses, etc. during the event (including aftereffects)
- We eat lunch around noon at the same near restaurant in the same area as possible, depending on the progress of the tour group.
- Recommendations regarding meals, accommodation, sightseeing, and bicycle transport may change from what is stated.
- Lunch, dinner, breakfast, and bathing fees are not included in the ride join fee.
- Support food is also dependent on paid donations from past participants. When you use it, please donate to volunteers or goods.
- Toll road usage fees, sightseeing fees, and travel expenses are not included in the ride participation fee.
- Routes and expenses occurred for group transportation will be decided on-site after discussion, taking into account terrain, weather and progress.
- Transportation costs from your home to the meeting/dissolution location and use of public transportation midway are not included.
- To maintain your health and maintain hygiene , please take a bath, shower, and change of clothes before using public transportation after your ride before going back to your home.
- To avoid inclement weather or traveling in the dark after sunset, we may ask you to turn back, take a shortcut, or take a bicycle onto train move from a station along the way.
- Participants are responsible for safety, course management, bicycle maintenance, cold/heat resistant clothing, measures to prevent bicycle stolen , etc.
- If we decide that you cannot participate safely at your own risk, if you are causing a significant nuisance to other participants, or if you are unable to follow the instructions of the staff, you will be asked to leave the venue even midway through.
- Please note that the participation fee will not be refunded under any circumstances.
- Sightseeing recommendations: If you arrive early and have time, please go sightseeing on your own.
- If you have a request for sightseeing in advance, we will take time in advance and provide support, such as temporarily taking over your bicycle.
- If you consult with us in advance, we will be able to arrange and provide on-site guidance regarding recommended tours for the day before and after ride.

Accommodation, dinner and breakfast

- This is a ride tour in which the organizer decides in advance which lodgings to stay at and travels from one inn to another to sightseeing spots and famous places.
- Accommodation fees are not included in the ride participation fee. It will be included in the cost estimate as a necessary expense at the time of application.
- Recommended accommodation, dinner and breakfast will be arranged by the organizer. Subject to change.
- As much as possible , we prepare at lodging locations bicycle storage in or near the hotel, a large hot spring bath, yukata, dinner and breakfast, a sleeping room, and a power source.
- We eat dinner and breakfast generally as a group at stay , but , if you wish to eat food outside the stay, please contact us in advance.
- If you have dinner, breakfast, or bathing buying outside the building, we will not provide transportation by support car and not accompany. Please move on your own by walking or using public transportation.
- Each day, luggage will be loaded into the support car and the start will be from the meeting point at designated accommodation. Please come to the meeting point by the departure time
- The meeting departure time is basically 7:30 am every morning, but it changes depending on the breakfast service time and driving distance, and will be decided locally.

=====

Dealing BS Travel Service Co., Ltd
Japan Tourism Agency Registered Travel Agent (No. 347) Regular member of the Japan Association of Travel

Planning by
Japan Tourism Organization General Incorporated Association

Representative Director Mikihiro Soma
Kyowa-bld 2F , 3-2-7, Shimbashi, Minato-ku, Tokyo, 105-0004, Japan
Inside BS Travel Service Co., Ltd
Mobile 090-4568-1444
E-Mail soma@jtourism.jp Home-Page <http://jtourism.jp/>

=====

Japan bicycle journey with stays

2025: <https://jtourism.jp/2020/wp-content/uploads/2025/09/JTOBicycleJourneys2025E.pdf>

2026: <https://jtourism.jp/2020/wp-content/uploads/2025/09/JTOBicycleJourneys2026E.pdf>

2027: <https://jtourism.jp/2020/wp-content/uploads/2025/09/JTOBicycleJourneys2027E.pdf>

One Day Ride Around Tokyo

<https://jtourism.jp/2020/wp-content/uploads/2024/09/JapanOneDayRideAroundTokyo.pdf>