

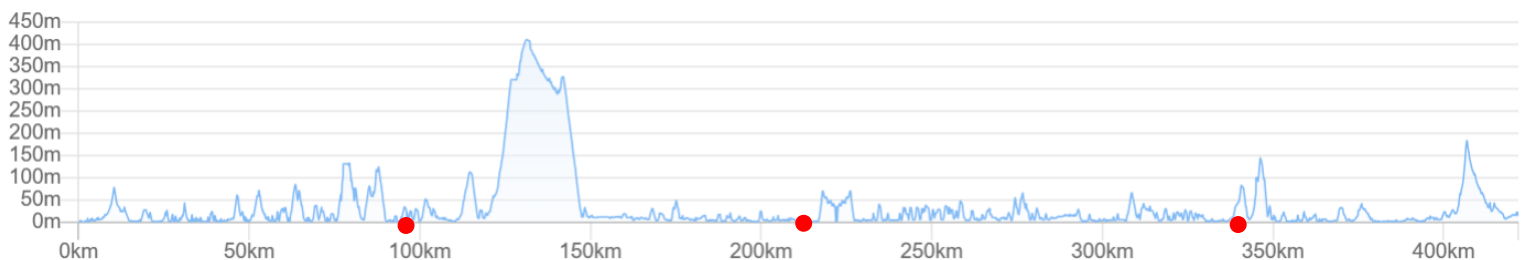
JTO Kii Peninsula Bicycle Journey

2026 December 10th(Thu) ~ 13th(Sun) 4Days

Toba station ~ Kii Nagashima ~ Kushimoto ~ Gobo ~ Rinku town

Distance 431km Total Gain 4427m

<https://www.navitime.co.jp/coursebuilder/course/2796cb6a95c040098ba8dcde8beee504>



- ① 10th(Thu) Toba station → Kii Nagashima (96km + 1275m)
- ② 11th(Fri) Kii Nagashima → Kushimoto (125km + 1133m)
- ③ 12th(Sat) Kushimoto → Gobo (121km + 1233m)
- ④ 13th(Sun) Gobo → Rinku town (89km + 786m)

Wakayama December 10th Sunrise at 6:54 Sunset at 16:50

Meet at December 10th(Thu) 7:30 Nagominoyado Hotel Wako(Pre stay recommend)
 〒517-0011 Mie pref Toba city Toba1-13-1 TEL:0599-25-2606



- For breakfast , possible to serve at Road Inn Toba from 6:30(Need reservation) At Family mart Kintetsu Toba station open 6:00 to 20:0. Please gather after eating breakfast.
- Before starting , please set bicycle by yourself and take course explain briefing for stays and meals.

Pre stay meal

Maruhachi dining(Until 21:00) Grill shell Iroha(Until 18:30) Maruei(Until 19:30) Sazanami Toba(Until 19:30)



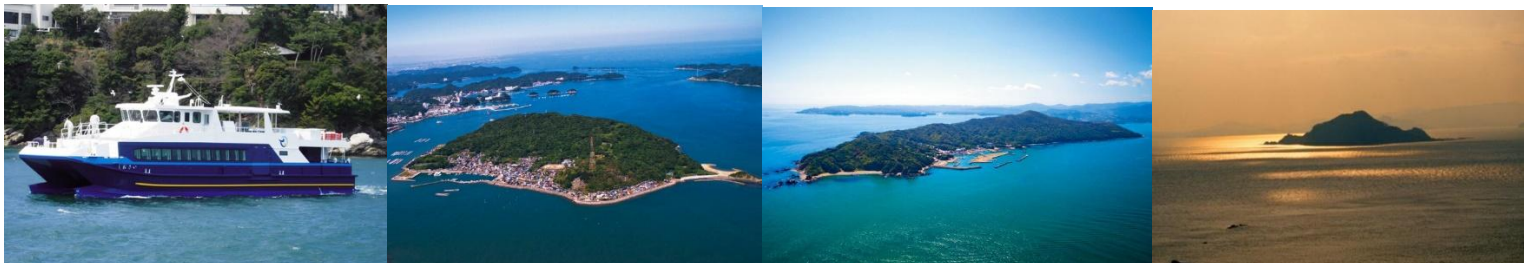
Toba Tenbinya Grill Binya(Until 21:00) Kappa Sushi(Until 22:00)



Pre stay sightseeing Toba aquarium Mikimoto pearl island Pearl museum Isewan bay ferry



Toba city liner ship Sakate island Sugashima island Toshi shima island Kamishima island

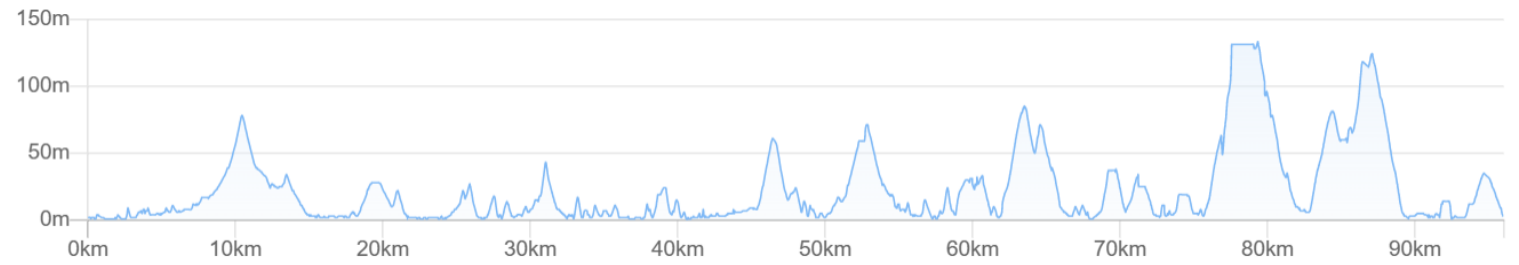
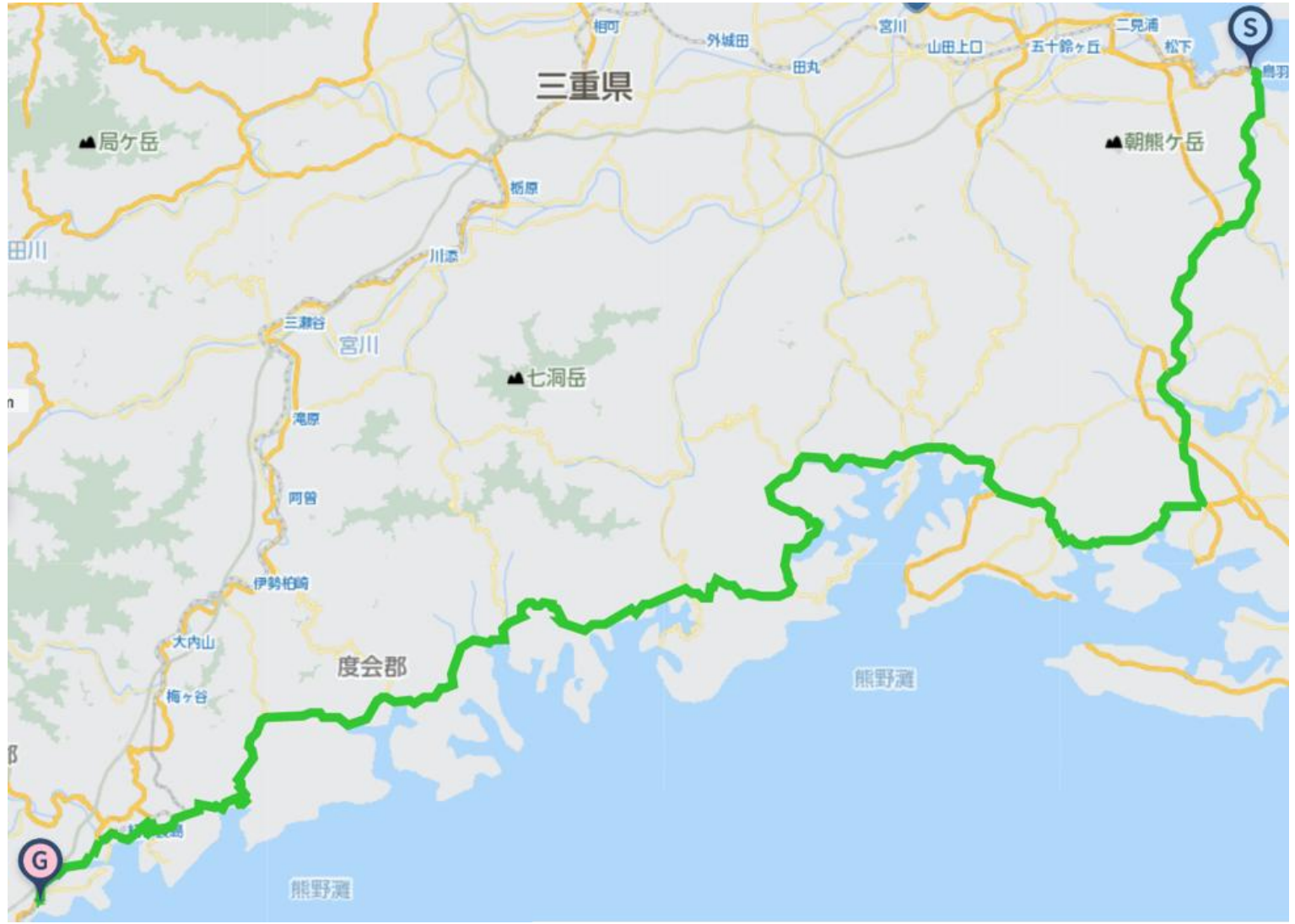


Futami Okitama shrine Meotoiwa couple rock Futamiyra bay Futami sea paradise



① 10th(Thu) Toba station→Kii Nagasima(96km+1275m)

<https://www.navitime.co.jp/coursebuilder/course/a3ce5c96338843daad84344af1abbb27>



Public move Toba→Ugata :Kintetsu Shima line Toba→Taki→Kii Nagashima station :JR Kisei Honsen line

Lunch Ugata station(30km) Isokko Shima dining Tai Japanese dining Otoya sushi Steak House GONA



Minami Ise Town hall(37km) Yamatoraya eel Toriichi chicken grill FIVE Green & Green



Minami Ise town Nayaura Minamishima junior high school(61km) Isomoto Yangaya Mamegata Nemunomori



Sightseeing Daiozaki cape Goza Shirahama Izawanomiya Kumanonada



Michinoeki Iseshima Pearl road Toba observation deck(12km Additional attack ride) Michinoeki Kiinagashima Manbo Nirahama observation deck



Stay Hotel Kii noMatsushima 〒519-3209 Mie pref Kitamuro gun Kihoku cho Kiinagashimaku Kori1057 TEL 0597-49-3048



Outside bath recommend Kii Nahashima Kori onsen spa 350m from stay on town public (10:00~21:00)



Outside dinner Shu Marusei Ichirikian SAKE HOUSE Shironokoshi



Other stay Hamakaze Momotaro Minoshima Mihama Sazanami Kihoku thouthand yrar spa Hotel Kinoza

② 11th(Fri) Kii Nagashima→Kushimoto(125km+1133m)

<https://www.navitime.co.jp/coursebuilder/course/697cab69823f446f8232b1dc3d74a6be>



Public move : Kii Nagashima→Shingu→Kushimoto JR Kisei honsen line JR Kinokuni line

Kushimoto station→Ushiomisaku: Kushimoto Community bus

Lunch Kunmanoshi station(53km) Il Rregalo Grill MORI AO dining Onigajo center sea view restaurant



Awada station(64km) Tsujisan house Furin Restaurant Rui Komugiko



Sightseeing Uotobi Gorge Owase bay Kumano Hayatama Taisha shrine Nachi big fall



Knomatsushima Dasichi wheel beach park Hashikuiwa Bridge pear rock Shiomisaki cape



Kii Oshima island Turkish memorial hall Ertuğrul Frigate Martyrs Memorial Monument Kashinozaki cape lighthouse Kongosaki



Michinoeki park Hichirimihama Kibocho Sea turtle park Michinoeki Nachi Ushi cape sightseeing tower



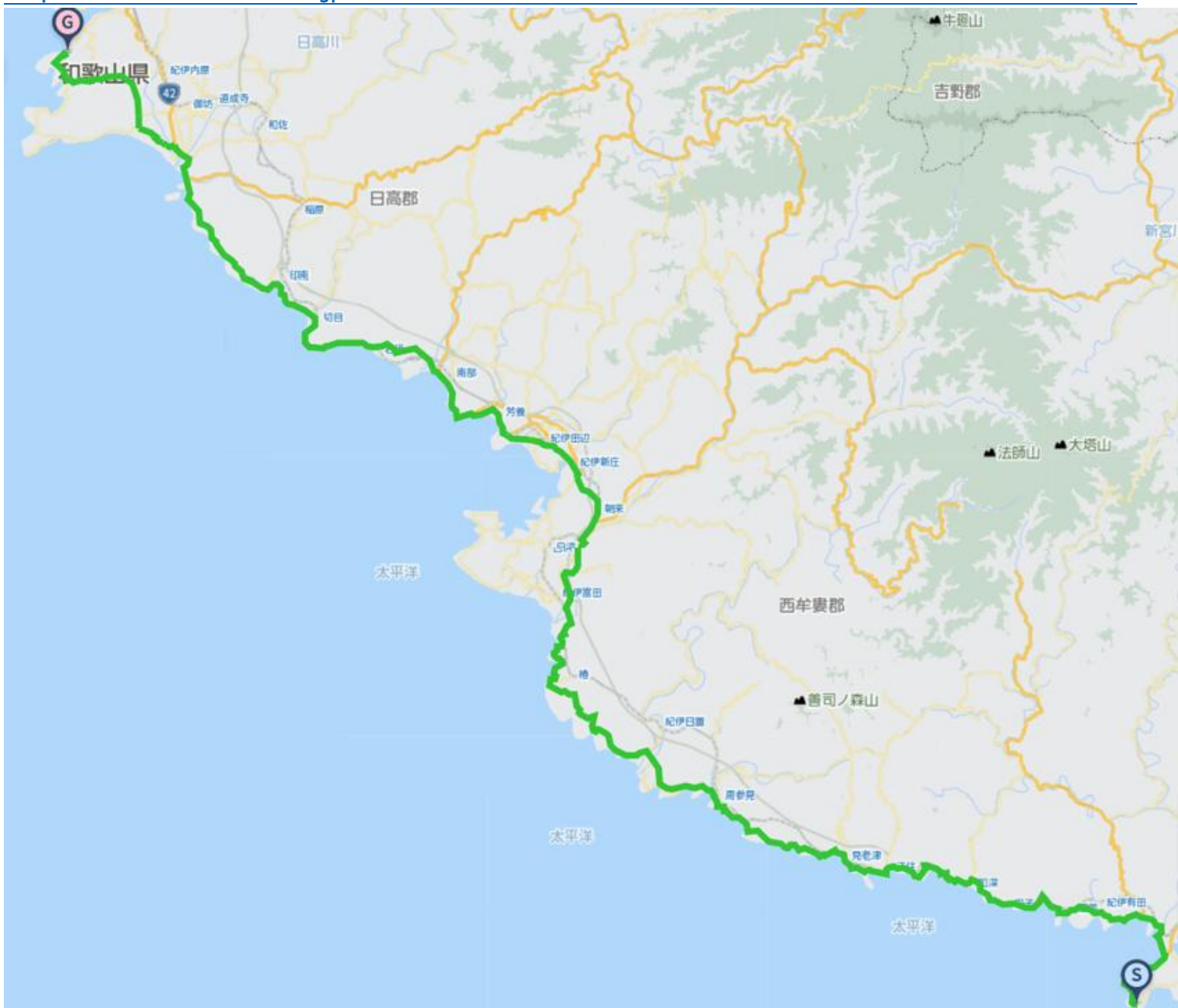
Stay Kushimoto Misaki rodge 〒649-3502 Wakayama prefHigashimurogun Kushimotocho Ushimisaki2864 tel:0735-62-1474



Other stay Nanki Kushimoto resort Oshima Hotel Seacans Business hotel Kushimoto st Minshuku Kushimoto Bath:Kushimoto spa coral Outside dinner Kushimoto sta Manguchi Sun doria Kuroshio sushi Jorakuen

③ 12th(Sat) Kushimoto→Gobo (121km+1233m)

<https://www.navitime.co.jp/coursebuilder/course/4ca34970844f4d88bb0b98d1d32317b2>



Breakfast・Support food(Kushimoto sta):Kusumoto sushi(4:00～) Café RON(7:00～) Family mart Kushimoto station 24h

Public move :Kushimoto→Gobo JR Kinokuni line

In case midway depart from Shirahama airport recommend airplane

Nanki shirahama airport→Haneda airport JAL 13:50→15:00 18:25→19:40

Lunch Shirahama town(65km) Saiwai sushi Pizzeria Pescatore Kiraku Wakayama ramen noodle WAN



Kii Tanabe(73km) Mako Horai sushi Maruta pere



Sightseeing Kushimoto sea park Sandanheki wall Senjojiki rock terrace Shirarahama beach



Ogigahama beach Senrinohama Thousand mile beach Hinomisaki Shirahama sea park



Bath recommend on depart at Shirahama airport Shirahama spa Sakinoyu Toretore onsen spa



Stay Hamanoya 〒649-1225 Wakayama pref Hidaka cho Oaza Mankui41 0738-64-2024



Outside bath Michishio no yu spa 130m from stay



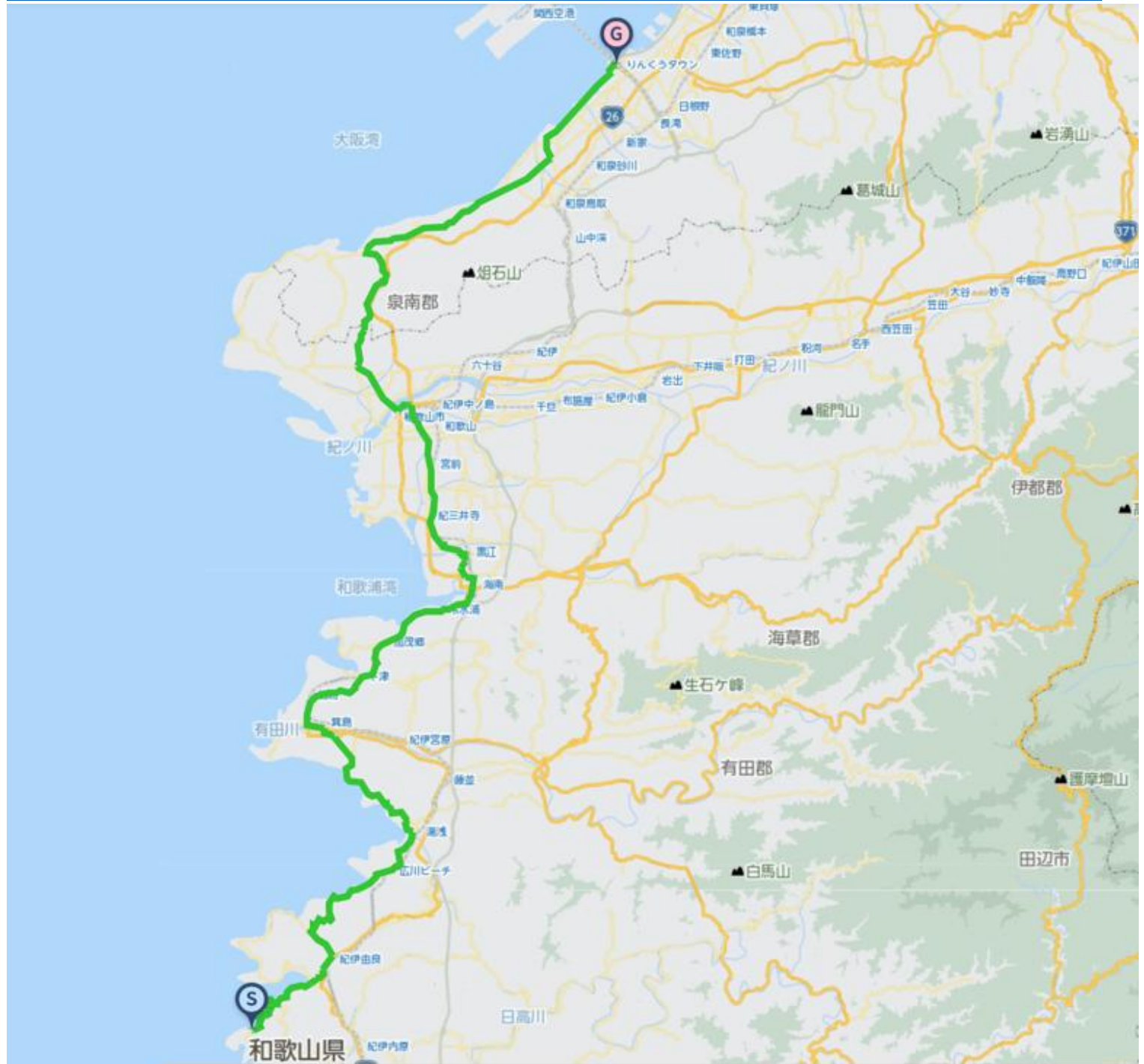
Outside dinner Hanagobo Hanamai Hidakagawa Ichiban port courtlet



Other stay Business hotel Forrest inn Gobo Central Hotel Green hill Gobo sta Misaki ryokan Hashimoto

④ 13th(Sun) Gobo→Rinku town(89km+786m)

<https://www.navitime.co.jp/coursebuilder/course/470ca20d2439447ebf7afd936b63bb35>

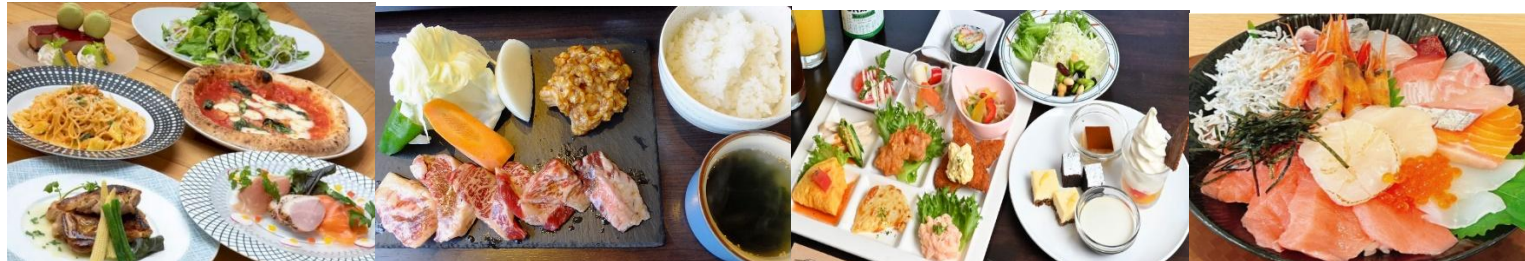


Public move Gobo→Wakayama→Hineno→Rinku town st JR Kinokuni line JR Kishuji express JR Kanku express

Lunch Wakayama city(56km) Yamatame dining Furaiya Hitotsubashian Mutsuaoi Japanese Kappo



ALLA LUCE The Godtan farm to table 14th floor farm Daikotei



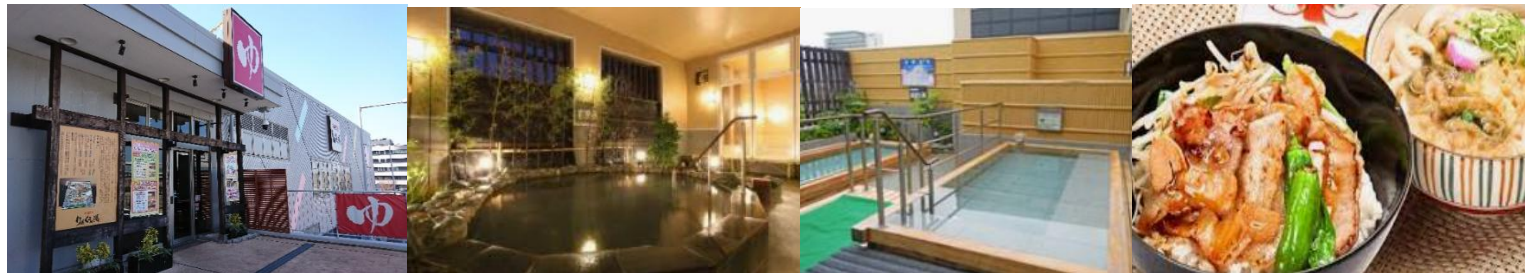
Sightseeing Shirasaki sea park Yabitsu beach Wakayama castle Awashima shrine



Kata beach Tomogashima island Sennan home beach park Rinku park airport bridge



Bath dinner Rinku no yu spa 〒598-0047 Osaka pref Izumisano city Rinku Orai minami3 072-469-4126



Dinner Rinku town st Iron grill Rinku Sky dining 256 Matsumoto head family steak house Saiki seafood conveyor belt sushi



Kansai airport Boteju1946 Kineya mugimaru Dotonbori Kamiza Osaka Gochi dining



Post stay Kanku spa garden palace ✕Kanku KIX Airport rounge ghas shower room



Move to Tokyo ex. Rinku town st→Kansai International st→Shin Osaka st→Tokyo station By Airplane KIX to each

Contact E-Mail Adress : soma@jtourism.jp

✂Itinerary changes are possible for individual and group applications. We will create the order custom made project and estimate.

For the order custom made project , let you enjoy for fully , we will create a plan for each group.

Please apply with the information as below.

✂Possible to apply from one person to number of group riders , make estimation.

✂Possible to make another plan on order made for another day , longer or shorter distance of course.

✂We make estimation as the number of riders , days you ride , ride fee , stay , food , public moving , sightseeing , attendant move·stay , for total costs.

✂You do not need to complete the entire designated distance every day. You can use train transport, support cars, or shortcuts to reach intermediate checkpoints and accommodations, and ride only the parts you want to ride, taking breaks, eating, and sightseeing along the way.

Up to the formal application as below , let you show the personal information.

·The day you ride ·Your name ·Sex ·date , month , year of birth , age ·Adress ·Handy phone number ·E-Mail address ·Number of join riders

·Stay and food wishes

✂We select and reserve the stay and foods. Personal arrangements are not possible by each riders.

✂Please give the wishes for shared room for men or women , single , twin , foods.

✂Please stay in the stays at the organizer' s designated stays.

In some case , we cannot meet your request and change the stays on designated.

·Please let me know the pre and post ride sightseeing wishes , settings.

·Possible to contact on the ride day (handy phone)&emergency contact (handy phone possible to contact to the substitute person ✂Other than the person riders yourself)

·Experience of your biggest riding , distance(km), Elevation gained(m)

implementation(Western calendar) season(month, spring summer fall winter)

area(country , prefectures, course name)

If we judge that you do not have enough experience to participate in this project, we may decline your participation.

Rental bicycle

Possible to prepare rental road-bicycle , cross-bicycle

If you wish to have rental bicycle , please apply in advance. Request together for Tokyo cycling tour and rental cycle , the partnership ship company.

① Height(cm)②weight(kg) ③bicycle model you wish ④Helmet ⑤grab ⑥pedal (binding or flat) ⑦Bicycle receiving place

Please let me know them when apply. Sometime , it may not turn out as you wish. Prepare wears and shoes by yourself.

I estimate rental price up to the information

Implementation notification; After recruitment deadline to some days before the starting , number of riders , weather forecast , judge the implementation and contact directly to the riders.

Refund ; In case of impossible to hold the phan , we pay back Amount excluding expenses such as fees from ride

participation fee.

If the participant is unable to participate due to circumstances, paid ride participation fees will not be returned.

If it becomes impossible to run due to weather or local situation judgment after the start, paid ride participation fees will not be returned.

Ride Join Fee(Per day Per person) 18,000JPY(Include Tax)

Max Possible Join 1 Orders ~ Minimum Number of riders; 5-Riders (Full days ride join)

※Fee(Per day Per person) In case specified number of participants join by general application.

Included ride join fee : Travel attendant, Support car accompanying Support food supply(fixed limited)

※NOT INCLUDE Moving fee between your home to the starting point, food, stay, support food more than the limited, public move fee, sightseeing fee are all not included at all.

※Joining on the way, Leaving midway, traveling with one's bicycle using public transportation, you should pay the ride join fee per day for each you made application.

When you apply, we make estimation for ride join fee with including not included costs for ride join fee.

- Take ride onto the tour recommended courses with group rides and solo freerides
- There is no competition for time. Riders work together to reach the goal. Awards will not be given based on ranking
- There will be no traffic control around the venue. Please follow the local traffic rules.
- Group rides/recommended course rides are the basics. Please notify in advance for your wish on solo free rides.
- It is also possible to switch to local wheeled transportation instead of riding due to physical condition weather etc.
- The support car transports unnecessary luggage while riding a bicycle, supply support food, follow finishing.
- The support car moves at the behind of the last rider, basically.
- If you ride out of the recommended course, we do not change the stay point.
- There is no support rider leading or tailgating.
- Those who can join that possible to reach their destination on their own using a smartphone, navigation system, or location search device, or possible on a group ride those who can accompany other members with cooperation.
- If there is a significant delay from the moving of other riders in the group, we will give you instructions on how to move your bicycle to the stopover point, accommodation on the day, and the goal.
- The organizer will present recommended courses in advance, but the support car will not be providing detailed guidance to riders while moving alongside them along the way.
- Bicycles, helmets, puncture kits, bike bags, clothing, cold weather gear changes, etc, please prepare what you need and bring it with you by yourself.
- Please wear brightly colored clothing such as red, yellow, and white. Never wear dark colors such as black or navy blue.

We will lend you a red jacket if necessary.

- You are responsible for your own bicycle maintenance and repairs. Please prepare your own spare tubes, maintenance tools, etc.
- Standing air pumps and tool boxes will be carried in the support car.
- Please carry a lightweight soft bicycle bag. Carry it with you while riding, so you can move around while riding.
- Depending on where we are staying, bicycle bags may also be used to store your bicycle inside the hotel. Please be sure to carry bicycle bag.
- If you wish to store your bicycle in the accommodation, please help us store it in a bicycle bag when you enter the stay and bring it into the building.
- Hard and semi-soft large cases compatible with airplane rides cannot be transported on the road by the support car.
- If you are joining with a large wheeled device with a hard case or semi-soft case that is compatible with airplane wheeling, after refilling the soft bicycle bag, check-in at the departure/arrival airport and advance transportation to the planned goal point are required.
- Please purchase your own travel insurance and bicycle insurance. Please purchase bicycle insurance with a personal liability amount of 200 million yen or more.
- Please bring your insurance card with you when participating. We check your carry-on the insurance before departure.
- In terms of event, in case injury and illness occur, the participants have no objection to receiving first aid. The organizers will not be held responsible for the method, process, etc.
- The participants in addition to the participants, relatives, heirs, executors, trustees, etc. will not make any claims for damages, etc regardless of the cause, the organizers will be exempt from responsibility in case of accidents, losses,

injuries, illnesses, etc. during the event (including aftereffects)

- We eat lunch around noon at the same near restaurant in the same area as possible, depending on the progress of the tour group.
- Recommendations regarding meals, accommodation, sightseeing, and bicycle transport may change from what is stated.
- Lunch, dinner, breakfast, and bathing fees are not included in the ride join fee.
- Support food is also dependent on paid donations from past participants. When you use it, please donate to volunteers or goods.
- Toll road usage fees, sightseeing fees, and travel expenses are not included in the ride participation fee.
- Routes and expenses occurred for group transportation will be decided on-site after discussion, taking into account terrain, weather and progress.
- Transportation costs from your home to the meeting/dissolution location and use of public transportation midway are not included.
- To maintain your health and maintain hygiene , please take a bath, shower, and change of clothes before using public transportation after your ride before going back to your home.
- To avoid inclement weather or traveling in the dark after sunset, we may ask you to turn back, take a shortcut, or take a bicycle onto train move from a station along the way.
- Participants are responsible for safety, course management, bicycle maintenance, cold/heat resistant clothing, measures to prevent bicycle stolen , etc.
- If we decide that you cannot participate safely at your own risk, if you are causing a significant nuisance to other participants, or if you are unable to follow the instructions of the staff, you will be asked to leave the venue even midway through.
- Please note that the participation fee will not be refunded under any circumstances.
- Sightseeing recommendations: If you arrive early and have time, please go sightseeing on your own.
- If you have a request for sightseeing in advance, we will take time in advance and provide support, such as temporarily taking over your bicycle.
- If you consult with us in advance, we will be able to arrange and provide on-site guidance regarding recommended tours for the day before and after ride.

Accommodation, dinner and breakfast

- This is a ride tour in which the organizer decides in advance which lodgings to stay at and travels from one inn to another to sightseeing spots and famous places.
- Accommodation fees are not included in the ride participation fee. It will be included in the cost estimate as a necessary expense at the time of application.
- Recommended accommodation, dinner and breakfast will be arranged by the organizer. Subject to change.
- As much as possible , we prepare at lodging locations bicycle storage in or near the hotel, a large hot spring bath, yukata, dinner and breakfast, a sleeping room, and a power source.
- We eat dinner and breakfast generally as a group at stay , but , if you wish to eat food outside the stay, please contact us in advance.
- If you have dinner, breakfast, or bathing buying outside the building, we will not provide transportation by support car and not accompany. Please move on your own by walking or using public transportation.
- Each day, luggage will be loaded into the support car and the start will be from the meeting point at designated accommodation. Please come to the meeting point by the departure time
- The meeting departure time is basically 7:30 am every morning, but it changes depending on the breakfast service time and driving distance, and will be decided locally.

=====

Dealing BS Travel Service Co., Ltd
 Japan Tourism Agency Registered Travel Agent (No. 347) Regular member of the Japan Association of Travel

Planning by
 Japan Tourism Organization General Incorporated Association
 Representative Director Mikihiro Soma
 Kyowa-bld 2F , 3-2-7, Shimbashi, Minato-ku, Tokyo, 105-0004, Japan
 Inside BS Travel Service Co., Ltd
 Mobile 090-4568-1444
 E-Mail soma@jtourism.jp Home-Page <http://jtourism.jp/>

2025: <https://jtourism.jp/2020/wp-content/uploads/2025/09/JTOBicycleJourneys2025E.pdf>

2026: <https://jtourism.jp/2020/wp-content/uploads/2025/09/JTOBicycleJourneys2026E.pdf>

2027: <https://jtourism.jp/2020/wp-content/uploads/2025/09/JTOBicycleJourneys2027E.pdf>

One Day Ride Around Tokyo

<https://jtourism.jp/2020/wp-content/uploads/2024/09/JapanOneDayRideAroundTokyo.pdf>